

Ready to start planning your care? Call us at [800-525-2225](tel:800-525-2225) to make an appointment.

×



Memorial Sloan Kettering
Cancer Center

[Make an Appointment](#)

[← Back](#)

HOSPITAL RESEARCH TEAMS

[Refer a Patient](#)

[Refer a Patient](#)

The Milind Rajadhyaksha Lab

ABOUT US

[Our mission, vision & core values](#)

[Leadership](#)

[History](#)

[Equality, diversity & inclusion](#)

[Annual report](#)

[Give to MSK](#)



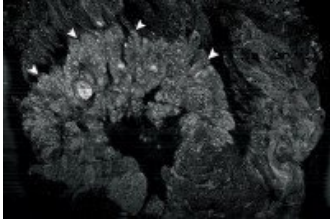
Milind Rajadhyaksha, PhD

I am a mechanical and optical engineer and principal investigator in the Optical Imaging Laboratory in the Dermatology Service. My research focuses on creating novel confocal microscopes and endoscopes for imaging skin and head and neck cancers, and translating this technology to clinical applications in screening, diagnostics and surgical guidance.

[View Lab Overview](#) →

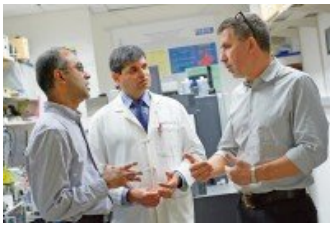
Featured News

SNAPSHOT



[New Technology Could Enable Immediate Detection of Tumor Borders during Surgery](#)

Memorial Sloan Kettering scientists are developing new imaging instrumentation that could enable pathologist and surgeons to collaborate more seamlessly and reduce the need for repeat surgeries.



[Out of the Lab and into the World: The Endoscopic Laser Scalpel](#)

A prototype of an innovative device developed at Memorial Sloan Kettering for minimally invasive surgery in head, neck, and other cancers in confined spaces holds promise for helping patients around the globe.

People




Milind Rajadhyaksha, PhD

Optical engineer Milind Rajadhyaksha studies confocal microscopy for the imaging of cancer, technology development, and translational and clinical studies in skin and head and neck cancers.

 [212-610-0832](tel:212-610-0832)

Office Phone

 [View physician profile](#)

Physician profile

Lab Affiliations

+

Achievements

Cover of British Journal of Dermatology (June 2009)

Cover of Journal of Investigative Dermatology (October 2012)

Cover of JID's 75th anniversary issue (October 2012)

Two papers, ranked 3rd and 16th, on JID's list of 50 most-cited papers in the past 25 years (2012)

Get in Touch

 [212-610-0832](tel:212-610-0832)

Office Phone

Disclosures

Doctors and faculty members often work with pharmaceutical, device, biotechnology, and life sciences companies, and other organizations outside of MSK, to find safe and effective cancer treatments, to improve patient care, and to educate the health care community.

MSK requires doctors and faculty members to report ("disclose") the relationships and financial interests they have with external entities. As a commitment to transparency with our community, we make that information available to the public.

Milind Rajadhyaksha discloses the following relationships and financial interests:

Caliber ID

Equity

ColdSteel Laser, LLC

Equity; Intellectual Property Rights

The information published here is for a specific annual disclosure period. There may be differences between information on this and other public sites as a result of different reporting periods and/or the various ways relationships and financial interests are categorized by organizations that publish such data.

This page and data include information for a specific MSK annual disclosure period (January 1, 2022 through disclosure submission in spring 2023). This data reflects interests that may or may not still exist. This data is updated annually.

Learn more about MSK’s COI policies [here](#). For questions regarding MSK’s COI-related policies and procedures, email MSK’s Compliance Office at ecoi@mskcc.org.

[View all disclosures](#) →

▼ Connect

[Contact us](#)

[Locations](#)

APPOINTMENTS

[800-525-2225](#)

▼ About MSK

[About us](#)

[Careers](#)

[Giving](#)

▼ Cancer Care

[Adult cancer types](#)

[Child & teen cancer types](#)

[Integrative medicine](#)

[Nutrition & cancer](#)

[Find a doctor](#)

▼ Research & Education

[Sloan Kettering Institute](#)

[Gerstner Sloan Kettering Graduate School](#) ■

[Graduate medical education](#)

[MSK Library](#) ■

[Communication preferences](#)

[Cookie preferences](#)

[Legal disclaimer](#)

[Accessibility statement](#)

[Privacy policy](#)

[Price transparency](#)

[Public notices](#)

© 2024 Memorial Sloan Kettering Cancer Center