

Ready to start planning your care? Call us at [800-525-2225](tel:800-525-2225) to make an appointment.

×



Memorial Sloan Kettering
Cancer Center

[About Us](#)
[Sloan Kettering Institute](#)

MOLECULAR PHARMACOLOGY PROGRAM

[Research](#)

The Omar Abdel-Wahab Lab

[Education & Training](#)

[Molecular Pharmacology Program](#)
[News & Events](#)

Research

[Open Positions](#)



Omar Abdel-Wahab, MD

Chair, Molecular Pharmacology Program, SKI; Attending Physician, Leukemia Service

Omar Abdel-Wahab is the Chair of SKI Molecular Pharmacology Program and an Attending Physician on the Leukemia Service in the Department of Medicine at Memorial Sloan Kettering Cancer Center.

[View Lab Overview](#) →



Featured News

IN THE LAB



[Research Suggests How Boosting Neoantigens Can Make Immunotherapy More Effective](#)

In mice, drugs that change the way proteins are assembled appear to make checkpoint inhibitor drugs work better.

IN THE LAB



[Scientists Find Cancer Drivers Hiding in a New Place](#)

New findings from researchers at the Sloan Kettering Institute suggest that cancer causes may be lurking in the molecule that bridges DNA and protein.

IN THE LAB



[Splicing May Be an Effective Target in the Fight against Cancer](#)

New drugs are being developed that target part of the process to make proteins.

[View All Featured News](#)

Publications Highlights

[Montoya S, Bourcier J, Noviski M, Lu H, Thompson MC, Chirino A, Jahn J, Sondhi AK, Gajewski S, Tan YSM, Yung S, Urban A, Wang E, Han C, Mi X, Kim WJ, Sievers Q, Auger P, Bousquet H, Brathaban N, Bravo B, Gessner M, Guiducci C, Iuliano JN, Kane T, Mukerji R, Reddy PJ, Powers J, Sanchez Garcia de Los Rios M, Ye J, Barrientos Risso C, Tsai D, Pardo G, Notti RQ, Pardo A, Affer M, Nawaratne V, Totiger TM, Pena-Velasquez C, Rhodes JM, Zelenetz AD, Alencar A, Roeker LE, Mehta S, Garippa R, Linley A, Soni RK, Skånland SS, Brown RJ, Mato AR, Hansen GM \(co-corresponding\), Abdel-Wahab O \(co-corresponding\), Taylor J \(co-corresponding\). Kinase-impaired BTK mutations are susceptible to clinical-stage BTK and IKZF1/3 degrader NX-2127. *Science*. 2024 Feb 2;383\(6682\):eadi5798. doi: 10.1126/science.adi5798. Epub 2024 Feb 2. PMID: 38301010.](#)

[Knorr K, Rahman J, Erickson C, Wang E, Monetti M, Li Z, Ortiz-Pacheco J, Jones A, Lu SX,](#)

[Stanley RF, Baez M, Fox N, Castro C, Marino AE, Jiang C, Penson A, Hogg SJ, Mi X, Nakajima H, Kunitomo H, Nishimura K, Inoue D, Greenbaum B, Knorr D, Ravetch J \(co-corresponding\), Abdel-Wahab O \(co-corresponding\). Systematic evaluation of AML-associated antigens identifies anti-U5 SNRNP200 therapeutic antibodies for the treatment of acute myeloid leukemia. Nat Cancer. 2023 Oct 23. doi: 10.1038/s43018-023-00656-2. Epub ahead of print. PMID: 37872381.](#)

[Mi X, Penson A, Abdel-Wahab O, Mailankody S. Genetic Basis of Relapse after GPRC5D-Targeted CAR T Cells. N Engl J Med. 2023 Oct 12;389\(15\):1435-1437. doi: 10.1056/NEJMc2308544. PMID: 37819961.](#)

[Wang E, Pineda JMB, Kim WJ, Chen S, Bourcier J, Stahl M, Hogg SJ, Bewersdorf JP, Han C, Singer ME, Cui D, Erickson CE, Tittley SM, Penson AV, Knorr K, Stanley RF, Rahman J, Krishnamoorthy G, Fagin JA, Creger E, McMillan E, Mak CC, Jarvis M, Bossard C, Beaupre DM, Bradley RK, Wang E, Pineda JMB, Kim WJ, Chen S, Bourcier J, Stahl M, Hogg SJ, Bewersdorf JP, Han C, Singer ME, Cui D, Erickson CE, Tittley SM, Penson AV, Knorr K, Stanley RF, Rahman J, Krishnamoorthy G, Fagin JA, Creger E, McMillan E, Mak CC, Jarvis M, Bossard C, Beaupre DM, Bradley RK \(co-corresponding\), Abdel-Wahab O \(co-corresponding\). Modulation of RNA splicing enhances response to BCL2 inhibition in leukemia. Cancer Cell. 2023 Jan 9;41\(1\):164-180.e8. doi: 10.1016/j.ccell.2022.12.002. Epub 2022 Dec 22. PMID: 36563682; PMCID: PMC9839614.](#)

[Chen S, Vedula RS, Cuevas-Navarro A, Lu B, Hogg SJ, Wang E, Benbarche S, Knorr K, Kim WJ, Stanley RF, Cho H, Erickson C, Singer M, Cui D, Tittley S, Durham BH, Pavletich TS, Fiala E, Walsh MF, Inoue D, Monette S, Taylor J, Rosen N, McCormick F, Lindsley RC, Castel P, Abdel-Wahab O. Impaired Proteolysis of Noncanonical RAS Proteins Drives Clonal Hematopoietic Transformation. Cancer Discov. 2022 Oct 5;12\(10\):2434-2453. doi: 10.1158/2159-8290.CD-21-1631. PMID: 35904492;](#)

[View All Publications](#)

People



Omar Abdel-Wahab, MD

Chair, Molecular Pharmacology Program, SKI; Attending Physician, Leukemia Service

Physician-scientist Omar Abdel-Wahab studies the functional genomics of hematopoietic malignancies.

MD, Duke University School of Medicine

✉ abdelwao@mskcc.org

Email Address

🔗 [View physician profile](#)

Physician profile

Members



Yuxi

Ai

Research Scholar



Salima

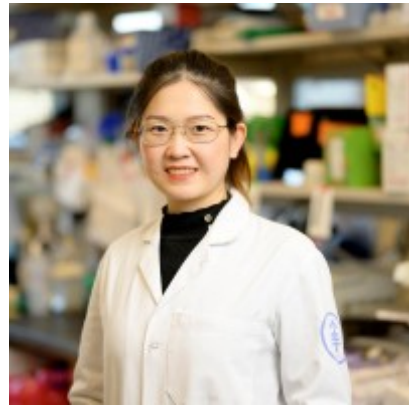
Benbarche

Senior Research Scientist

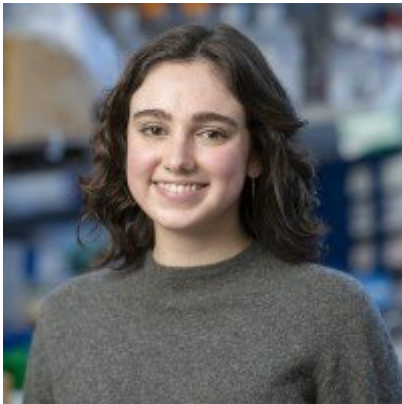


Cynthia Castro

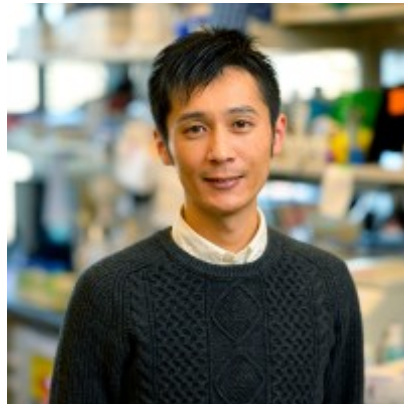
Research Technician



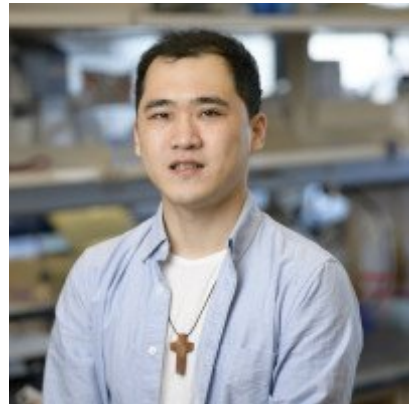
Bing-Yi Chen
Research Scholar



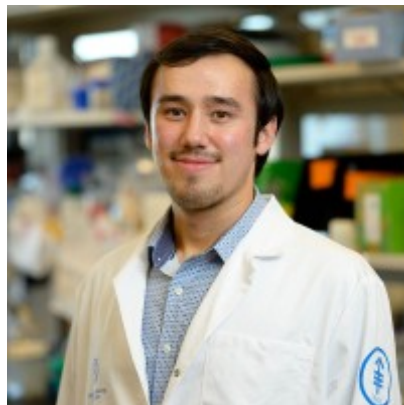
Nina
Fox
Research Technician



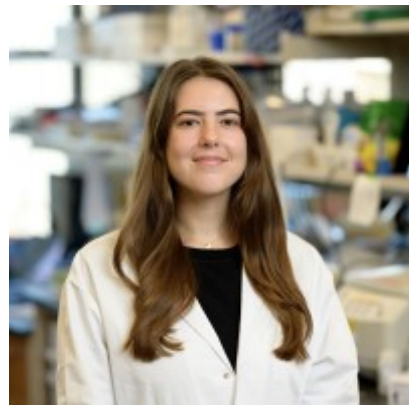
Takeshi Fujino
Research Fellow



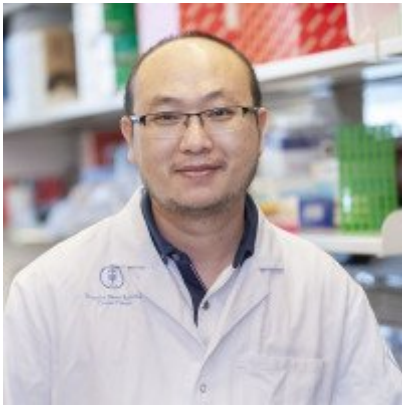
Won Kim
Graduate Student



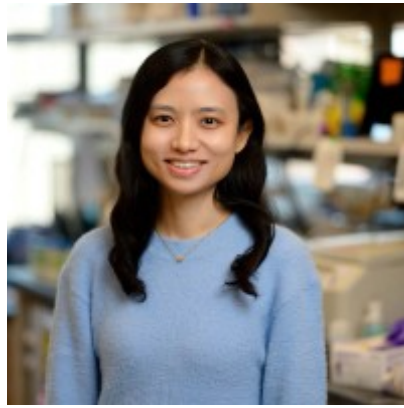
Alex Lewis
Research Technician



Jennifer Lewis
Medical Student



Bin Lu
Research Associate

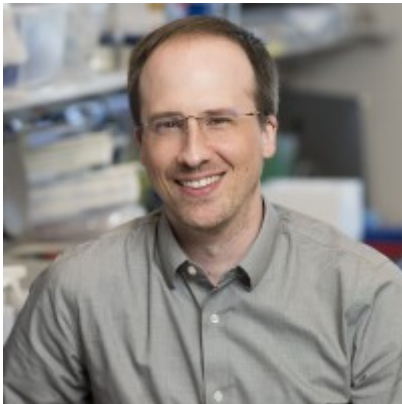


Xiaoli
Mi
Fellow



Jahan Rahman
Computational Biologist II

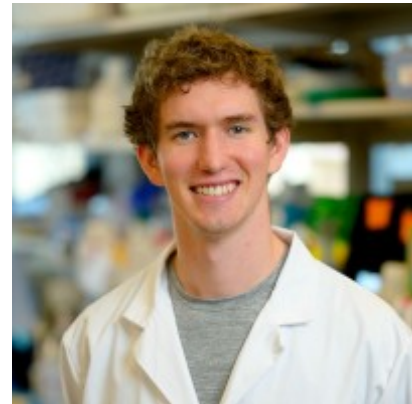
Erich Sabio
Senior Research Scientist



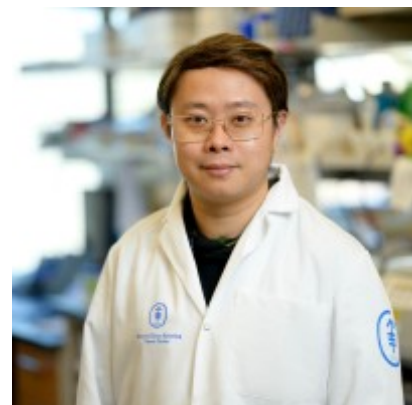
Robert Stanley
Fellow



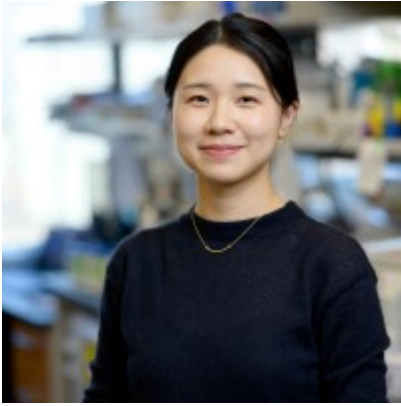
Steven
Tittley
Research Lab Manager



Kenyon Weis
Research Technician



Pu
Zhang
Research Scholar



Qian
Zhang
Research Scholar

Lab Alumni
+

Lab Affiliations
+

Achievements

[Josie Robertson Investigator \(2012-2017\)](#)

Seldin-Smith Award for Pioneering Research, American Society of Clinical Investigation

Pershing Square Sohn Prize for Young Investigators in Cancer Research

Leukemia & Lymphoma Society Clinical Scholar Award

William Dameshek Prize, American Society of Hematology

Read more
+

Get in Touch

✉ abdelwao@mskcc.org

Lab Head Email

Disclosures

Doctors and faculty members often work with pharmaceutical, device, biotechnology, and life sciences companies, and other organizations outside of MSK, to find safe and effective cancer treatments, to improve patient care, and to educate the health care community.

MSK requires doctors and faculty members to report (“disclose”) the relationships and financial interests they have with external entities. As a commitment to transparency with our community, we make that information available to the public.

Omar Abdel-Wahab discloses the following relationships and financial interests:

Alchemy, Inc.

Equity; Professional Services and Activities (Uncompensated)

Array Biopharma

Professional Services and Activities

AstraZeneca

Professional Services and Activities

Codify Therapeutics, Inc.

Equity; Intellectual Property Rights; Professional Services and Activities (Uncompensated)

Envisagenics

Equity; Professional Services and Activities (Uncompensated)

Epizyme

Intellectual Property Rights

Harmonic Discovery Inc.

Equity

Janssen Global Services, LLC

Professional Services and Activities

Loxo Oncology

Professional Services and Activities

Pfizer, Inc.

Professional Services and Activities

The information published here is for a specific annual disclosure period. There may be differences between information on this and other public sites as a result of different reporting periods and/or the

various ways relationships and financial interests are categorized by organizations that publish such data.

This page and data include information for a specific MSK annual disclosure period (January 1, 2022 through disclosure submission in spring 2023). This data reflects interests that may or may not still exist. This data is updated annually.

Learn more about MSK's COI policies [here](#). For questions regarding MSK's COI-related policies and procedures, email MSK's Compliance Office at ecoi@mskcc.org.

[View all disclosures](#) →

[Communication preferences](#)

[Cookie preferences](#)

[Legal disclaimer](#)

[Accessibility Statement](#)

[Privacy policy](#)

[Public notices](#)

© 2024 Memorial Sloan Kettering Cancer Center