



Gerstner Sloan Kettering
Graduate School of Biomedical Sciences

[Welcome to GSK](#)

HUMAN ONCOLOGY & PATHOGENESIS PROGRAM

[Admissions](#)

The Ross Levine Lab

[Cancer Biology](#)

Faculty

[Cancer Engineering](#)

Research

[Research](#)

[Alumni](#)



Ross L. Levine, MD

Professor

The goal of our research is to improve our understanding of the genetic basis of blood disorders known as myeloid malignancies, and to use this knowledge to improve therapies for patients with these disorders. Our efforts are focused on the identification and characterization of somatic mutations in hematologic malignancies using candidate gene, genome-wide, and functional approaches, with a specific interest in

the role of aberrant signal transduction in malignant transformation and in the effects of mutations in epigenetic modifiers in myeloproliferative neoplasms (MPNs) and acute myeloid leukemia (AML). As a physician-scientist, we have a specific interest in translating this knowledge back to the clinic, in the preclinical and clinical evaluation of targeted therapies for leukemia patients, and in the development of clinically tractable genomic assays for patients with hematologic malignancies.



The Levine Lab

Featured News

IN THE LAB



[AACR 2021 Research Roundup: Chromosomal Instability, Early Changes in Blood Cancer, Revamping CAR T Cell Therapy](#)

MSK researchers shared their latest research developments at the 2021 meeting of the American Association for Cancer Research.

IN THE LAB



[Single-Cell Study Sheds Light on Leukemia's Family Tree](#)

New research looks at how a series of mutations in normal blood cells can lead to them becoming cancerous and how these mutations accumulate as cancer progresses.

FINDING



[Why Do Certain Chemotherapies Increase the Likelihood of Blood Cancer?](#)

New research focuses on clonal hematopoiesis, an age-related blood condition that increases the risk of blood cancer.

[View All Featured News](#)

Publications

[Sykes SM, Kokkaliaris KD, Milsom MD, Levine RL, Majeti R. Clonal evolution of preleukemic hematopoietic stem cells in acute myeloid leukemia. Experimental hematology. 2015; 43\(12\):989-92.](#)

[Guryanova OA, Lieu YK, Garrett-Bakelman FE, Spitzer B, Glass JL, Shank K, Martinez AB, Rivera SA, Durham BH, Rapaport F, Keller MD, Pandey S, Bastian L, Tovbin D, Weinstein AR, Teruya-Feldstein J, Abdel-Wahab O, Santini V, Mason CE, Melnick AM, Mukherjee S, Levine RL. Dnmt3a regulates myeloproliferation and liver-specific expansion of hematopoietic stem and progenitor cells. Leukemia. 2016; 30\(5\):1133-42. NIHMSID: NIHMS745048](#)

[View All Publications](#)

People



Ross L. Levine, MD

Professor

Mechanisms of genetic and epigenetic cooperativity which drive myeloid transformation; Elucidating and modeling evolution from hematopoietic stem/progenitor cells to clonal hematopoiesis and then to myeloid malignancies; Identification and credentialing novel therapeutic dependencies in myeloid malignancies

MD, Johns Hopkins School of Medicine

✉ leviner@mskcc.org

Email Address

🔗 [View physician profile](#)

Physician profile

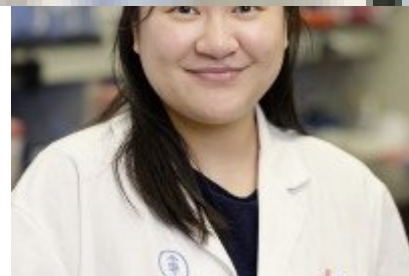
Members

Lab Technician



Robert
Bowman

Assistant Professor,



Louise
Cai

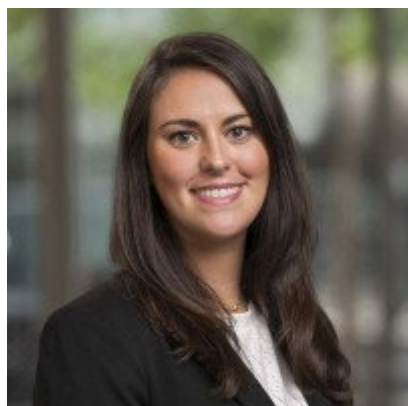
Research Technician

University of Pennsylvania,
Philadelphia, PA

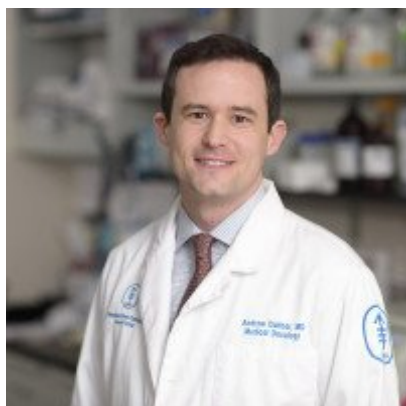


Sheng
Cai

Instructor, Department of
Medicine



Christine Caprioli
Project Coordinator



Andrew
Dunbar

Instructor, Department of
Leukemia



Inés Fernández
Maestre

GSK Graduate Student



Rebecca Gelfer

GSK Graduate Student

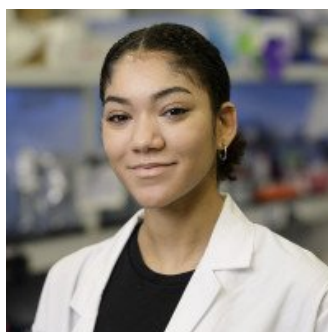


Jacob Glass

Assistant Attending
Physician

Emily Guzzardi

Lab Technician



Remie Houston

Research Technician

Bing Li

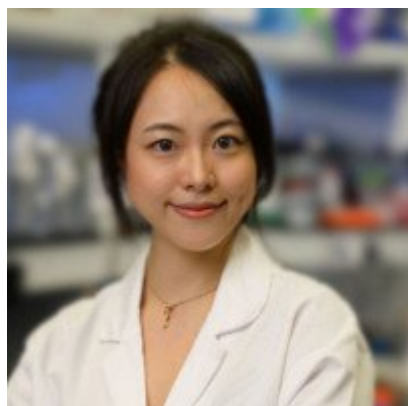
Visiting Investigator



Shoron

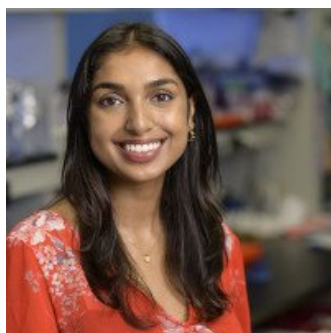
Mowla

Research Technician



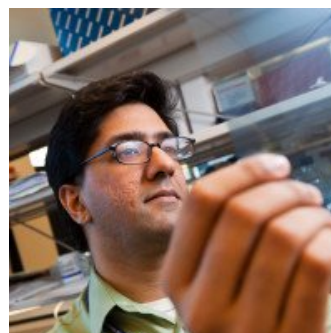
**Young
Park**

Senior Research
Technician



Sonali Persaud

Research Technician



Raajit K.

Rampal

Assistant Attending



Troy Robinson

GSK Graduate Student

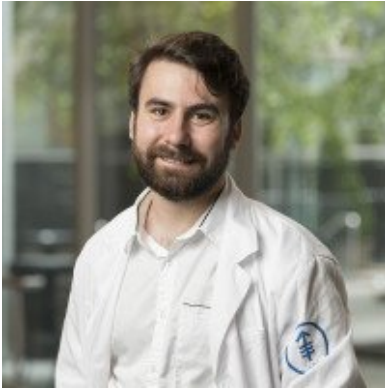


Daria Shlyueva

Postdoctoral Fellow

Aaron Stonestrom

Fellow



Michael Waarts
GSK Graduate Student

Matthew Wereski
Senior Research
Technician

Xiaodi Wu
Fellow

Wenbin Xiao
Assistant Attending

Pablo Sánchez
Vela
Research Scholar

Lab Alumni
+

Lab Affiliations
+

Achievements

Scholar, Leukemia and Lymphoma Society Scholar (2012)
Louis and Allston Boyer Young Investigator Award for Basic Research, Memorial Sloan
Kettering Cancer Center (2011)
Member, American Society of Clinical Investigation (2011)
Sir William Osler Young Investigator Award, Interurban Clinical Club (2011)

Get in Touch

✉ leviner@mskcc.org
Lab Head Email

☎ [646-888-2796](tel:646-888-2796)
Lab Phone

Disclosures

Doctors and faculty members often work with pharmaceutical, device, biotechnology, and life sciences companies, and other organizations outside of MSK, to find safe and effective cancer treatments, to improve patient care, and to educate the health care community.

MSK requires doctors and faculty members to report (“disclose”) the relationships and financial interests they have with external entities. As a commitment to transparency with our community, we make that information available to the public.

Ross L. Levine discloses the following relationships and financial interests:

Ajax Therapeutics, Inc.

Equity; Fiduciary Role / Position; Intellectual Property Rights; Professional Services and Activities (Uncompensated)

Anovia Biosciences, Inc

Equity

AstraZeneca

Professional Services and Activities

Auron Therapeutics, Inc.

Equity; Professional Services and Activities (Uncompensated)

Bakx Therapeutics

Equity

C4 Therapeutics

Equity; Professional Services and Activities

Cure Breast Cancer Foundation

Intellectual Property Rights

ECOG-ACRIN Cancer Research Group

Professional Services and Activities (Uncompensated)

Epiphanes, Inc.

Equity

Epizyme

Intellectual Property Rights

Genome Quebec

Professional Services and Activities

Goldman Sachs

Professional Services and Activities

Imago Biosciences

Equity

Incyte

Professional Services and Activities

Isoplexis Corporation

Equity; Professional Services and Activities (Uncompensated)

Janssen Pharmaceuticals, Inc.

Professional Services and Activities

Jubilant Therapeutics Inc.

Professional Services and Activities

Kurome Therapeutics, Inc.

Equity; Professional Services and Activities

Mana Therapeutics, Inc.

Equity; Professional Services and Activities

Mission Bio

Equity; Professional Services and Activities

Prelude Therapeutics

Equity; Professional Services and Activities

Qiagen

Equity; Fiduciary Role / Position; Professional Services and Activities (Uncompensated)

Scorpion Therapeutics, Inc.

Equity; Professional Services and Activities

Syndax

Equity

The Mark Foundation

Fiduciary Role / Position; Professional Services and Activities

Zentalis Pharmaceuticals

Equity; Professional Services and Activities

The information published here is for a specific annual disclosure period. There may be differences between information on this and other public sites as a result of different reporting periods and/or the various ways relationships and financial interests are categorized by organizations that publish such data.

This page and data include information for a specific MSK annual disclosure period (January 1, 2022 through disclosure submission in spring 2023). This data reflects interests that may or may not still exist. This data is updated annually.

Learn more about MSK's COI policies [here](#). For questions regarding MSK's COI-related policies and procedures, email MSK's Compliance Office at ecoi@mskcc.org.

[View all disclosures](#) →

[Communication preferences](#)

[Cookie preferences](#)

[Legal disclaimer](#)

[Accessibility Statement](#)

[Privacy policy](#)

[Public notices](#)

© 2024 Louis V. Gerstner Jr. Graduate School of Biomedical Sciences Memorial Sloan Kettering Cancer Center

