

Ready to start planning your care? Call us at [800-525-2225](tel:800-525-2225) to make an appointment.

×



Memorial Sloan Kettering
Cancer Center

[Make an Appointment](#)

[← Back](#)

HUMAN ONCOLOGY & PATHOGENESIS PROGRAM

[Patient & Family Resources](#)

[Diagnosis & Treatment](#)

[Refer a Patient](#)

The Sarat Chandarlapaty Lab

ABOUT US

[Our mission, vision & core values](#)

[Leadership](#)

[History](#)

[Equality, diversity & inclusion](#)

[Annual report](#)

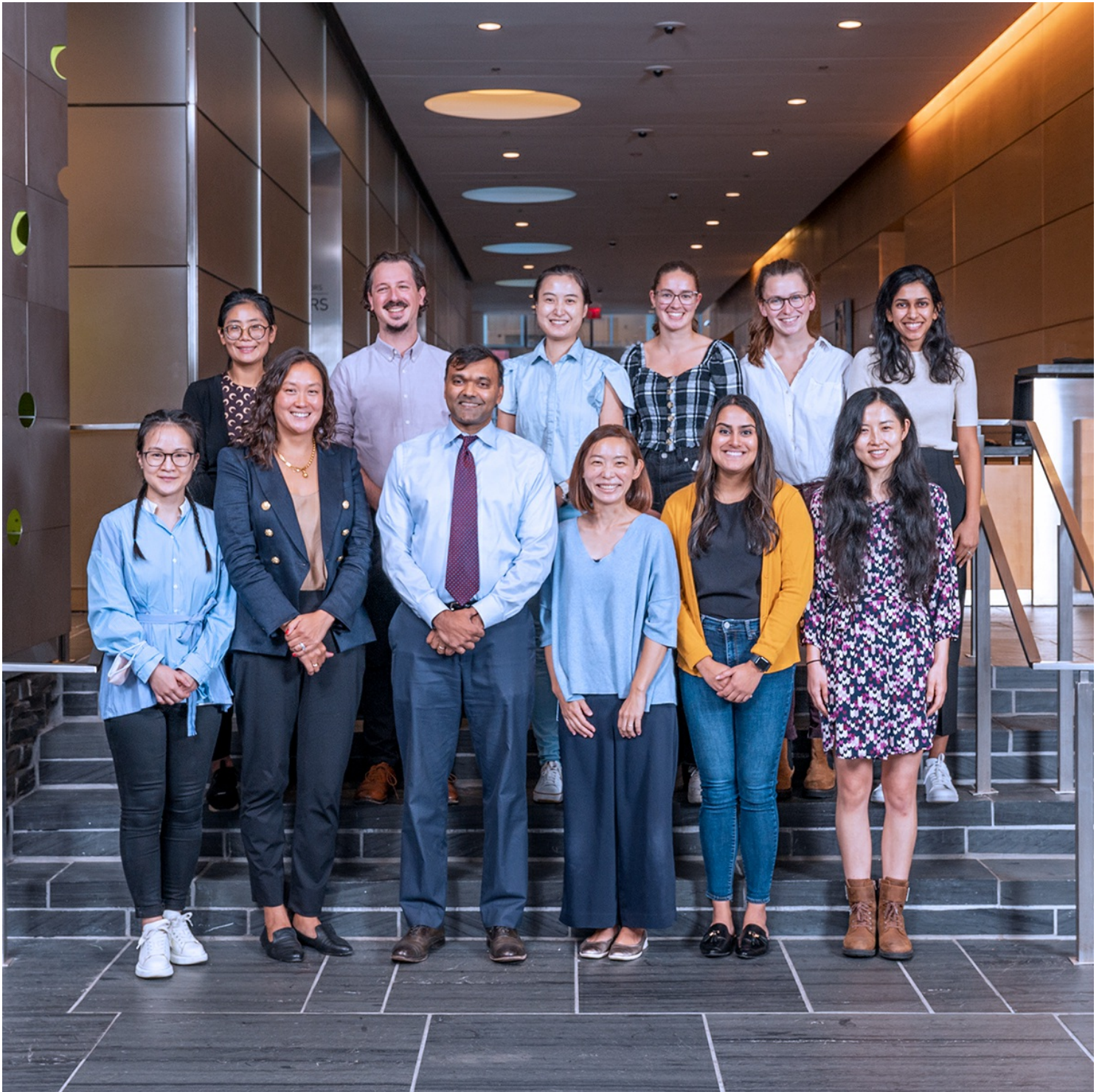
[Give to MSK](#)



Sarat Chandarlapaty, MD, PhD
Nadissy Foundation Endowed Chair in Breast Cancer Research

My lab focuses on understanding the regulation of growth factor signal transduction pathways that are aberrantly activated in cancers, with a focus on those implicated in breast cancer pathogenesis.

[View Lab Overview](#) →



Publications Highlights

Will M, Liang J, Metcalfe C, Chandarlapaty S. [Therapeutic resistance to anti-oestrogen therapy in breast cancer.](#) Nat Rev Cancer. 2023 Oct;23(10):673-685. doi: 10.1038/s41568-023-00604-3. Epub 2023 Jul 27. Review. PubMed PMID: 37500767; PubMed Central PMCID: PMC10529099.

Li Q, Jiang B, Guo J, Shao H, Del Priore IS, Chang Q, Kudo R, Li Z, Razavi P, Liu B, Boghossian AS, Rees MG, Ronan

MM, Roth JA, Donovan KA, Palafox M, Reis-Filho JS, de Stanchina E, Fischer ES, Rosen N, Serra V, Koff A, Chodera JD, Gray NS, Chandarlapaty S. [INK4 Tumor Suppressor Proteins Mediate Resistance to CDK4/6 Kinase Inhibitors](#). Cancer Discov. 2022 Feb;12(2):356-371. doi: 10.1158/2159-8290.CD-20-1726. Epub 2021 Sep 20. PubMed PMID: 34544752; PubMed Central PMCID: PMC8831444.

Razavi P, Dickler MN, Shah PD, Toy W, Brown DN, Won HH, Li BT, Shen R, Vasani N, Modi S, Jhaveri K, Caravella BA, Patil S, Selenica P, Zamora S, Cowan AM, Comen E, Singh A, Covey A, Berger MF, Hudis CA, Norton L, Nagy RJ, Odegaard JI, Lanman RB, Solit DB, Robson ME, Lacouture ME, Brogi E, Reis-Filho JS, Moynahan ME, Scaltriti M, Chandarlapaty S. [Alterations in PTEN and ESR1 promote clinical resistance to alpelisib plus aromatase inhibitors](#). Nat Cancer. 2020 Apr;1(4):382-393. doi: 10.1038/s43018-020-0047-1. Epub 2020 Mar 23. PubMed PMID: 32864625; PubMed Central PMCID: PMC7450824.

Li Z, Razavi P, Li Q, Toy W, Liu B, Ping C, Hsieh W, Sanchez-Vega F, Brown DN, Da Cruz Paula AF, Morris L, Selenica P, Eichenberger E, Shen R, Schultz N, Rosen N, Scaltriti M, Brogi E, Baselga J, Reis-Filho JS, Chandarlapaty S. [Loss of the FAT1 Tumor Suppressor Promotes Resistance to CDK4/6 Inhibitors via the Hippo Pathway](#). Cancer Cell. 2018 Dec 10;34(6):893-905.e8. doi: 10.1016/j.ccell.2018.11.006. PubMed PMID: 30537512; PubMed Central PMCID: PMC6294301.

Toy W, Shen Y, Won H, Green B, Sakr RA, Will M, Li Z, Gala K, Fanning S, King TA, Hudis C, Chen D, Taran T, Hortobagyi G, Greene G, Berger M, Baselga J, Chandarlapaty S. [ESR1 ligand-binding domain mutations in hormone-resistant breast cancer](#). Nat Genet. 2013 Dec;45(12):1439-45. doi: 10.1038/ng.2822. Epub 2013 Nov 3. PubMed PMID: 24185512; PubMed Central PMCID: PMC3903423.

[View All Publications](#)

People



Sarat Chandarlapaty, MD, PhD

Nadissy Foundation Endowed Chair in Breast Cancer Research

Physician-scientist Sarat Chandarlapaty studies the regulation of growth factor signaling networks in cancer.

MD, Wake Forest School of Medicine

PhD, University of North Carolina

✉ chandars@mskcc.org

Email Address

🔗 [View physician profile](#)

Physician profile

Members



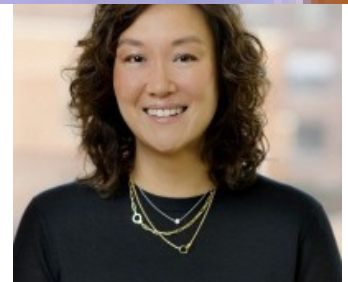
Catherine Jones

Research Technician



Rei Kudo

Research Fellow



Minna Lee

Assistant Attending



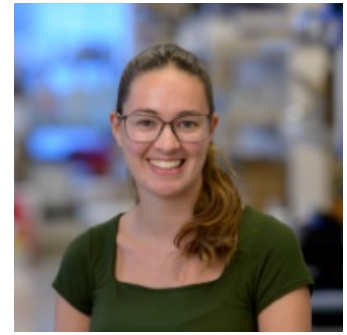
Antonio Marra
Research Associate



Samuel Molina
GSK Graduate Student



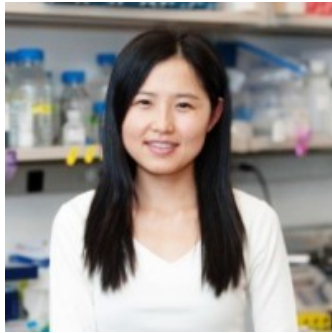
Sharanya
Nag
Research Scholar



Elizabeth
O'Connell
Research Technician



Payal
Patel
Graduate Student



Hong Shao
Research Lab Manager



Marie Will
Assistant Attending

Lab Alumni
+

Lab Affiliations
+

Achievements

Clinical Investigator Award, Damon Runyon Cancer Research Foundation (2012)

Young Investigator Award, American Society of Clinical Oncology (2007)

Fellow in Biomedical Research, The Dana Foundation (2006)

Open Positions

To learn more about available postdoctoral opportunities, please visit our [Career Center](#)

To learn more about compensation and benefits for postdoctoral researchers at MSK, please visit [Resources for Postdocs](#)

Career Opportunities

[Apply now](#) →

Get in Touch

✉ chandars@mskcc.org

Lab Head Email

✂ [Lab Twitter](#)

Disclosures

Doctors and faculty members often work with pharmaceutical, device, biotechnology, and life sciences companies, and other organizations outside of MSK, to find safe and effective cancer treatments, to improve patient care, and to educate the health care community.

MSK requires doctors and faculty members to report (“disclose”) the relationships and financial interests they have with external entities. As a commitment to transparency with our community, we make that information available to the public.

Sarat Chandarlapaty discloses the following relationships and financial interests:

Boxer Capital, LLC

Professional Services and Activities

Eli Lilly and Company

Professional Services and Activities

Encore Medical Education

Professional Services and Activities

Genesis Therapeutics

Professional Services and Activities

Gerson Lehrman Group

Professional Services and Activities

Novartis

Professional Services and Activities

Nuvalent, Inc.

Professional Services and Activities

Odyssey Biosciences

Equity; Fiduciary Role / Position; Intellectual Property Rights

Prelude Therapeutics

Professional Services and Activities

SAGA Diagnostics

Professional Services and Activities

Totus Medicines Inc.

Equity

eFFECTOR Therapeutics

Equity; Professional Services and Activities

The information published here is for a specific annual disclosure period. There may be differences between information on this and other public sites as a result of different reporting periods and/or the various ways relationships and financial interests are categorized by organizations that publish such data.

This page and data include information for a specific MSK annual disclosure period (January 1, 2022 through disclosure submission in spring 2023). This data reflects interests that may or may not still exist. This data is updated annually.

Learn more about MSK's COI policies [here](#). For questions regarding MSK's COI-related policies and procedures, email MSK's Compliance Office at ecoi@mskcc.org.

[View all disclosures](#) →

Connect

[Contact us](#)

[Locations](#)

APPOINTMENTS

[800-525-2225](#)



About MSK

[About us](#)

[Careers](#) ■

[Giving](#) ■

Cancer Care

[Adult cancer types](#)

[Child & teen cancer types](#)

[Integrative medicine](#)

[Nutrition & cancer](#)

[Find a doctor](#)

▼ Research & Education

[Sloan Kettering Institute](#)

[Gerstner Sloan Kettering Graduate School](#) ■

[Graduate medical education](#)

[MSK Library](#) ■

[Communication preferences](#)

[Cookie preferences](#)

[Legal disclaimer](#)

[Accessibility statement](#)

[Privacy policy](#)

[Price transparency](#)

[Public notices](#)

© 2024 Memorial Sloan Kettering Cancer Center