

Ready to start planning your care? Call us at [800-525-2225](tel:800-525-2225) to make an appointment.

×



Memorial Sloan Kettering
Cancer Center

[Make an Appointment](#)

[← Back](#)

[For Research Scientists](#)

[Make an Appointment & Treatment](#)

[Refer a Patient](#)

ABOUT US

[Our mission, vision & core values](#)

[Leadership](#)

[History](#)

[Equality, diversity & inclusion](#)

[Annual report](#)

[Give to MSK](#)

Artificial Intelligence

Cancer Genetics & Genomics

Cancer Immunotherapy & Vaccines

Cancer Metabolism

Cell-Based Therapy

Search



[Explore our research topics.](#)



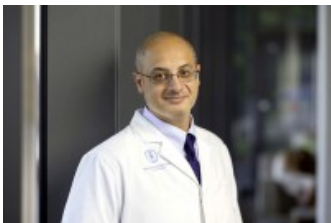
[Learn about our recent discoveries.](#)



[Meet our researchers.](#)

190 Faculty Members found

MOLECULAR PHARMACOLOGY PROGRAM



[Omar Abdel-Wahab, MD](#)

Physician-scientist Omar Abdel-Wahab studies the functional genomics of hematopoietic malignancies.

[View Publications](#)

abdelwao@mskcc.org

MEMORIAL HOSPITAL RESEARCH LABORATORIES



[Prasad S. Adusumilli, MD](#)

Physician-scientist Prasad S. Adusumilli studies tumor immunology and the development of T-cell-mediated immunotherapy for thoracic malignancies and pleural-based diseases.

[View Publications](#)

CHEMICAL BIOLOGY PROGRAM



[Heeseon An, PhD](#)

Heeseon An's lab studies protein degradation in health and disease using chemical, biological, and proteomics tools.

[View Publications](#)

AnH@mskcc.org

MEMORIAL HOSPITAL RESEARCH LABORATORIES



[Cristina R. Antonescu, MD](#)

The Antonescu lab focuses on translocation-associated sarcoma pathogenesis and generating in vitro models.

[View Publications](#)

antonesc@mskcc.org

CHEMICAL BIOLOGY PROGRAM



[Daniel Bachovchin, PhD](#)

Chemical biologist Daniel Bachovchin designs selective inhibitors to study enzymes and pathways in cancer and immune system signaling.

[View Publications](#)

bachovcd@mskcc.org

HUMAN ONCOLOGY & PATHOGENESIS PROGRAM



[Samuel Bakhoun, MD, PhD](#)

Physician-scientist Samuel Bakhoun studies the role of chromosomal instability in tumor evolution and metastasis.

[View Publications](#)

samuel.bakhoun@gmail.com

HUMAN ONCOLOGY & PATHOGENESIS PROGRAM

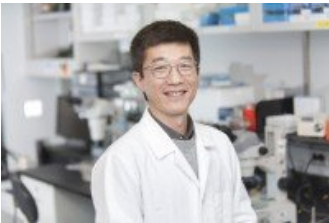


[Vinod Balachandran, MD](#)

Surgeon scientist Vinod Balachandran develops novel immunotherapies for pancreatic cancer.

[View Publications](#)

DEVELOPMENTAL BIOLOGY PROGRAM



[Zhirong Bao, PhD](#)

The Bao laboratory investigates how the genome dictates development using *C. elegans* as a model.

[View Publications](#)

baoz@mskcc.org

DEVELOPMENTAL BIOLOGY PROGRAM



[Mary Baylies, PhD](#)

The Baylies laboratory studies the mechanisms that form and maintain muscle both during normal development and in disease.

[View Publications](#)

m-baylies@ski.mskcc.org

COMPUTATIONAL & SYSTEMS BIOLOGY PROGRAM



[Colin Begg, PhD](#)

Biostatistician Colin Begg has research interests spanning cancer epidemiology and statistical methods that are applicable to clinical research more broadly.

[View Publications](#)

beggc@mskcc.org

[Load More](#)

Connect

[Contact us](#)

[Locations](#)

APPOINTMENTS

[800-525-2225](#)



▾ About MSK

[About us](#)

[Careers](#) ■

[Giving](#) ■

▾ Cancer Care

[Adult cancer types](#)

[Child & teen cancer types](#)

[Integrative medicine](#)

[Nutrition & cancer](#)

[Find a doctor](#)

▾ Research & Education

[Sloan Kettering Institute](#)

[Gerstner Sloan Kettering Graduate School](#) ■

[Graduate medical education](#)

[MSK Library](#) ■

[Communication preferences](#)

[Cookie preferences](#)

[Legal disclaimer](#)

[Accessibility statement](#)

[Privacy policy](#)

[Price transparency](#)

[Public notices](#)

© 2024 Memorial Sloan Kettering Cancer Center