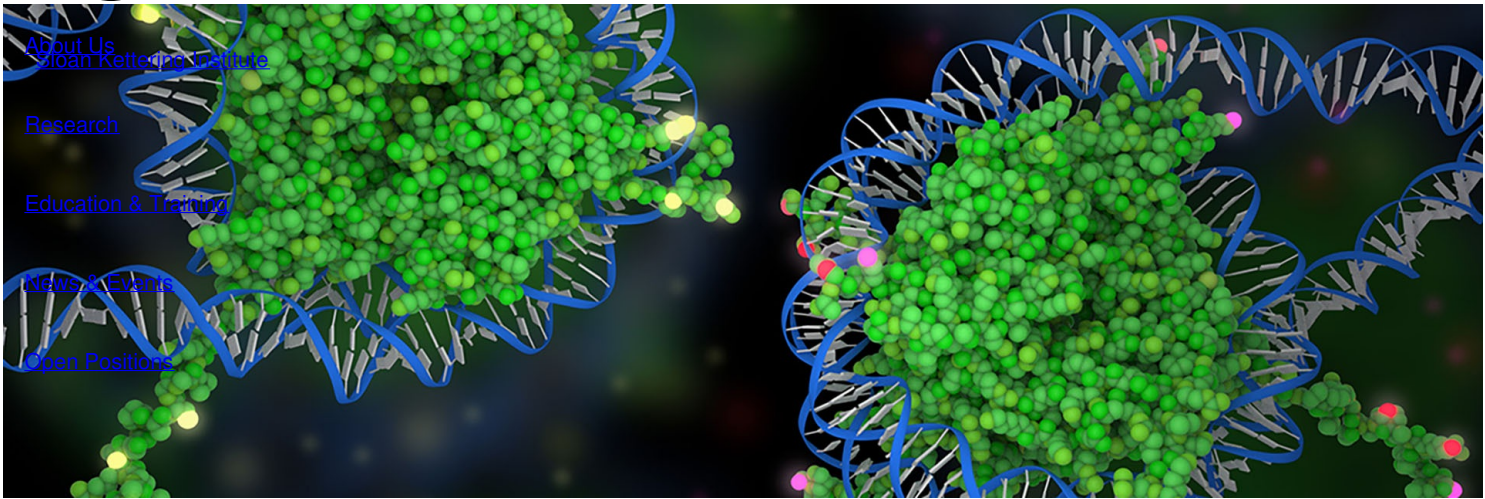


Ready to start planning your care? Call us at [800-525-2225](tel:800-525-2225) to make an appointment.

×



Memorial Sloan Kettering
Cancer Center



Cell Biology Program

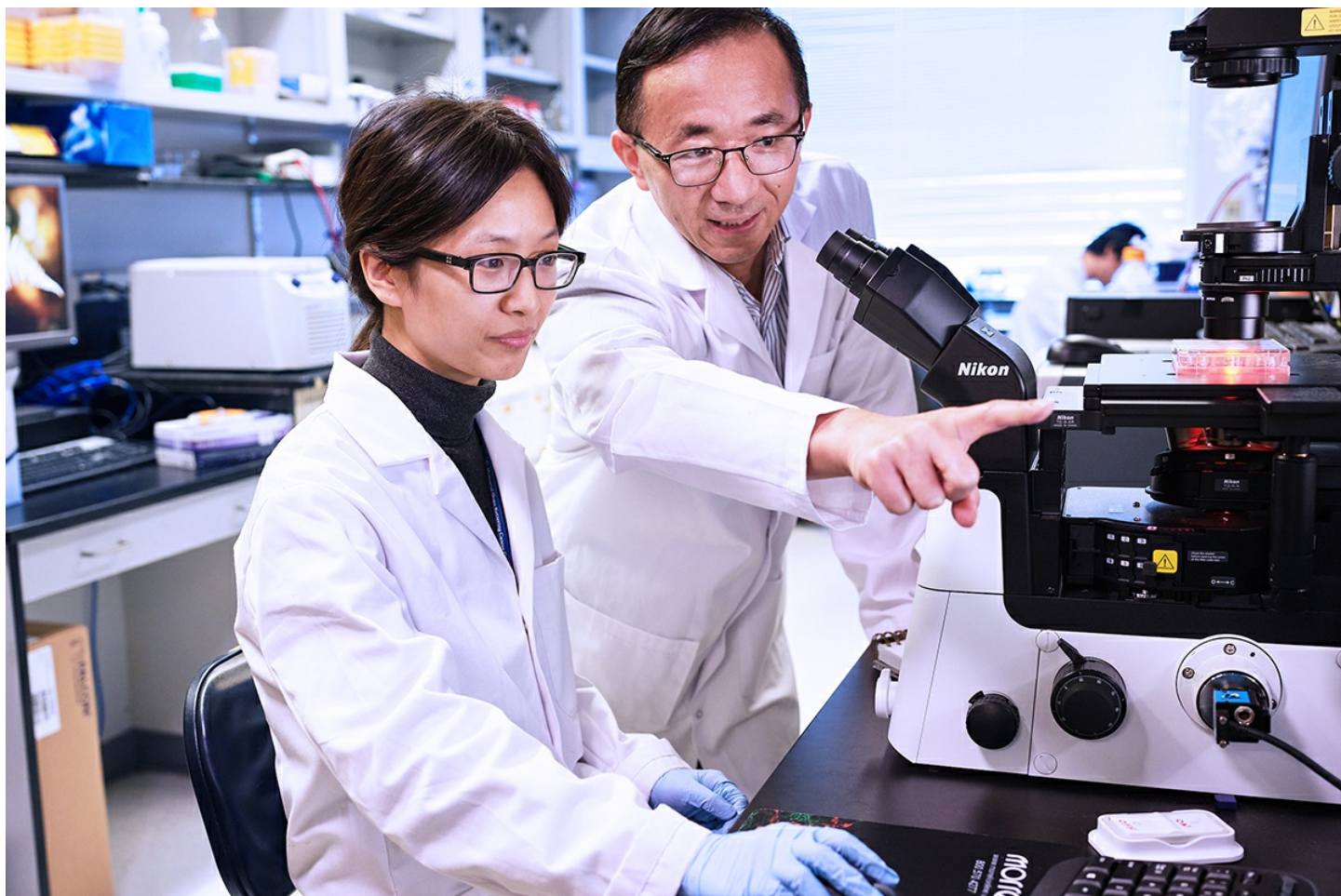
[View all SKI research programs](#)

The Cell Biology Program at SKI is an innovative, world-class program where we elucidate the mysteries how cells work and educate the next generations of scientists in an inclusive and supportive environment.

Now and in the past, we discover fundamental aspects of cells and their interactions with each other using state-of-the-art technologies, ranging from molecular and cellular imaging to advanced mass spectrometry and innovative tissue culture and animal models.

Read more

+



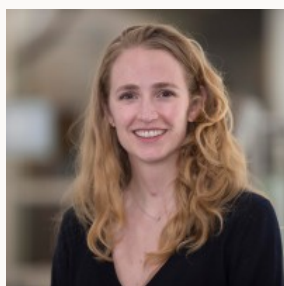
SKI cell biologists Junmei Yi (left) and Xuejun Jiang in the lab.

Our Faculty



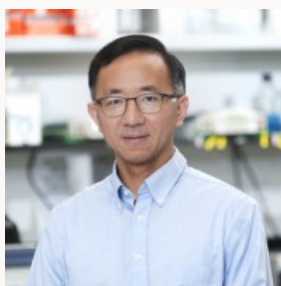
[Robert Farese](#)

Member, Cell Biology



[Lydia](#)

Finley



[Xuejun Jiang](#)

Member, Cell Biology



[Philipp](#)

Niethammer

member, Cell Biology
Program, SKI; Professor,
Weill Cornell; Alfred P.
Sloan Chair, MSKCC

[Finley](#)

Associate Member, Cell
Biology Program, SKI;
Professor, Weill Cornell
Robertson Investigator,
NYSCF

member, Cell Biology
Program, SKI; Professor,
Weill Cornell



[Alban](#)

[Ordureau](#)

Assistant Member, Cell
Biology Program, SKI;
Assistant Professor, Weill
Cornell

[Nienhammer](#)

Member, Cell Biology
Program, SKI; Professor,
Weill Cornell



[Michael Overholtzer](#)

Member, Cell Biology
Program, SKI; Professor,
Weill Cornell; Dean,
Gerstner Sloan Kettering
Graduate School



[Meng-Fu Bryan Tsou](#)

Member, Cell Biology
Program, SKI; Professor,
Weill Cornell



[Tobias](#)

[Walther](#)

Program Chair, Cell
Biology Program, SKI
Professor, Weill Cornell
Enid A. Haupt Chair,
MSKCC Investigator,
HHMI

Tri-Institutional Members





[Timothy A. Ryan](#)

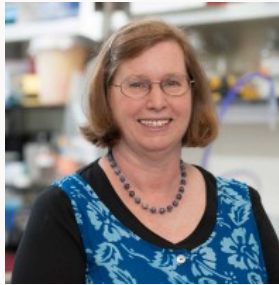
Emeritus



[Raju Chaganti](#)



[Malcolm A. S. Moore](#)



[Marilyn D. Resh](#)

Collaborations & Resources

SKI offers a wide array of core facilities and other technologies, as well as significant opportunity for collaboration. Scientists in the Cell Biology Program derive particular benefit from close ties to the following:

[Cancer Biology & Genetics Program](#)

[Center for Epigenetics Research](#)

[Center for Molecular Imaging & Nanotechnology](#)

Latest News

View latest research news from the Sloan Kettering Institute.

[View all news](#)

Seminars & Events

View events and symposia sponsored by the Cell Biology Program.

[View all upcoming events](#)

▾ About Us

[Overview](#)

[Leadership](#)

[Administration](#)

[History](#)

[Contact Us](#)



▾ Research

[Overview](#)

[Research programs](#)

[Research labs](#)

[Core facilities & resources](#)

▾ Education & Training

[Overview](#)

[Postdoctoral training](#)

[Gerstner Sloan Kettering Graduate School](#)

[Joint graduate programs](#)

[Programs for college & high school students](#)

▾ News & Events

[Overview](#)

[Seminars & events](#)

▾ Open Positions

[Overview](#)

[Faculty positions](#)

[Postdoctoral positions](#)

[Communication preferences](#)

[Cookie preferences](#)

[Legal disclaimer](#)

[Accessibility Statement](#)

[Privacy policy](#)

[Public notices](#)

© 2024 Memorial Sloan Kettering Cancer Center