

Ready to start planning your care? Call us at [646-926-0945](tel:646-926-0945) to make an appointment.

×



Memorial Sloan Kettering  
Cancer Center

[Make an Appointment](#)

[Back](#)

[About Our Mission, Vision & Treatment](#)

[Human Oncology & Pathogenesis Program](#)

[Learn About Cancer & Treatment](#)

ABOUT US

[Our mission, vision & core values](#)

[Leadership](#)

[History](#)

[Inclusion & belonging](#)

[Annual report](#)

[Give to MSK](#)

FOR THE MEDIA

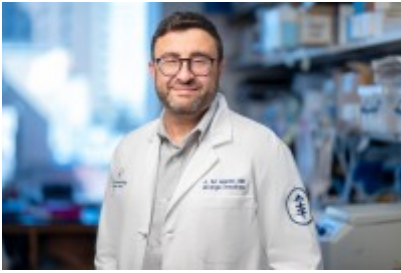
Category

Human Oncology & Pathogenesis Program

Search

30 Faculty members found

HUMAN ONCOLOGY & PATHOGENESIS PROGRAM



### [A. Ari Hakimi, MD](#)

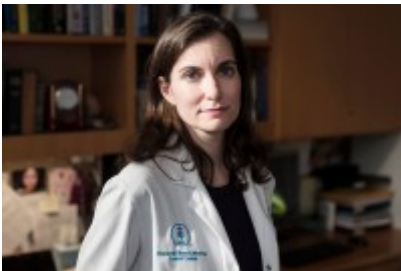
Physician-Scientist A. Ari Hakimi, MD studies genetic and metabolic mechanisms of immune response in kidney cancers.

[!\[\]\(99f58673407353e96a019fbca558fd72\_img.jpg\) View Publications](#)

[!\[\]\(0f848bbd71cef6b345273b16f905912a\_img.jpg\) hakimia@mskcc.org](mailto:hakimia@mskcc.org)

---

HUMAN ONCOLOGY & PATHOGENESIS PROGRAM



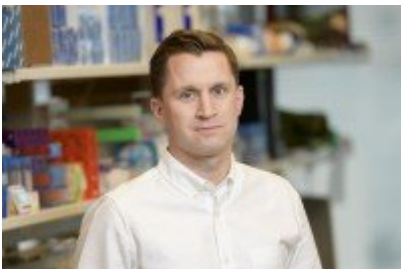
### [Adrienne A. Boire, MD, PhD](#)

Physician-scientist Adrienne Boire studies metastasis to the central nervous system.

[!\[\]\(6059a5aa8b4ca7bb793408023d6c6e42\_img.jpg\) View Publications](#)

---

HUMAN ONCOLOGY & PATHOGENESIS PROGRAM



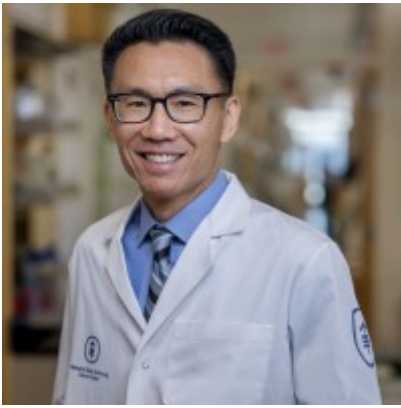
### [Andrew M. Intlekofer, MD, PhD](#)

Physician-scientist Andrew Intlekofer investigates why cancer cells depend on specific pathways of nutrient metabolism.

[!\[\]\(f60b7a900783ac3fd531bfd9c111be6d\_img.jpg\) View Publications](#)

---

HUMAN ONCOLOGY & PATHOGENESIS PROGRAM



### [Andy Minn, MD, PhD](#)

The Minn Lab investigates how cancers evolve under chronic inflammation and persistent immune pressure to acquire resistance to immunotherapies, with the goal of developing innovative therapies to restore anti-tumor immunity.

[!\[\]\(4729e517bc6a7cd81c8025b9646574fb\_img.jpg\) View Publications](#)

---

#### HUMAN ONCOLOGY & PATHOGENESIS PROGRAM



### [Asmin Tulpule, MD, PhD](#)

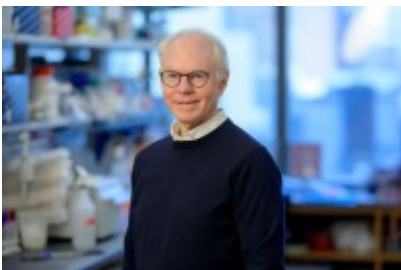
The Tulpule lab studies how cells compartmentalize critical cellular processes with a focus on biomolecular condensates in cancer.

[!\[\]\(3e2231b1ad3ca8da8658228c00dd08e0\_img.jpg\) View Publications](#)

[!\[\]\(5361750c22c4e047a52f4eac1ec2d4cc\_img.jpg\) tulpulea@mskcc.org](mailto:tulpulea@mskcc.org)

---

#### HUMAN ONCOLOGY & PATHOGENESIS PROGRAM



### [Charles L. Sawyers, MD](#)

Human Oncology and Pathogenesis Program Chair Charles Sawyers develops molecularly targeted cancer therapy.

[!\[\]\(125d701e9425b54c764340b5671b38cd\_img.jpg\) View Publications](#)

[!\[\]\(21199eb166cc97331a0c54c649195dcc\_img.jpg\) sawyersc@mskcc.org](mailto:sawyersc@mskcc.org)

---

#### MEMORIAL HOSPITAL RESEARCH LABORATORIES



#### [Christine A. Iacobuzio-Donahue, MD, PhD](#)

Physician-scientist Christine Iacobuzio-Donahue studies the genomics and cell biology of pancreatic and other solid tumors as it relates to subclonal evolution, tumor progression, and metastasis.

[!\[\]\(c694a3ff3b077d76910920a6a1593ab4\_img.jpg\) View Publications](#)

---

#### IMMUNO-ONCOLOGY PROGRAM



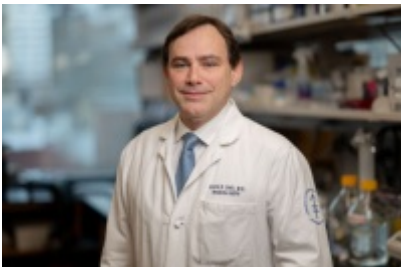
#### [Chrysothemis Brown, MD, PhD](#)

The Brown Lab studies how the tissue environment shapes immune cell fate and function during early life immune development, inflammation, and cancer.

[!\[\]\(758ebdf4629c903da74c2e079717ae32\_img.jpg\) View Publications](#)

---

#### HUMAN ONCOLOGY & PATHOGENESIS PROGRAM



#### [David B. Solit, MD](#)

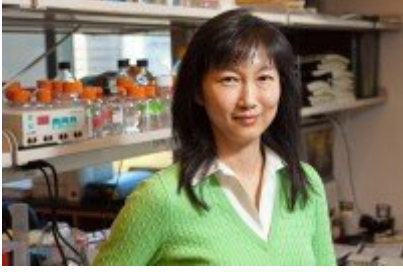
Physician-scientist David Solit studies human oncology and pathogenesis, genomics, oncogenes and tumor suppressors, cancer therapeutics, and clinical trials.

[!\[\]\(f4912148590488019602cab6e009e597\_img.jpg\) View Publications](#)

[!\[\]\(8af806fb1314382d09bc5ec5b767526c\_img.jpg\) solيتد@mskcc.org](mailto:solيتد@mskcc.org)

---

#### HUMAN ONCOLOGY & PATHOGENESIS PROGRAM



### [Emily H. Cheng, MD, PhD](#)

Physician-scientist Emily Cheng studies the molecular mechanisms of cell death and their implications in tumorigenesis, tumor-microenvironment interactions, targeted therapy, and immunotherapy.

[!\[\]\(0aff635c4179ba9e710b00f4b01d3b20\_img.jpg\) View Publications](#)

[!\[\]\(830769b31eeeaca920791081939ff8ba\_img.jpg\) chenge1@mskcc.org](mailto:cheng1@mskcc.org)

[Load More](#)

© 2026 Memorial Sloan Kettering Cancer Center