

Ready to start planning your care? Call us at [800-525-2225](tel:800-525-2225) to make an appointment.

×



Memorial Sloan Kettering
Cancer Center

[Make an Appointment](#)

[Collaborative Research Centers](#)

[Research and Treatment](#)

[Refer a Patient](#)

ABOUT US

ABOUT US

[Our mission, vision & core values](#)

[Leadership](#)

[History](#)

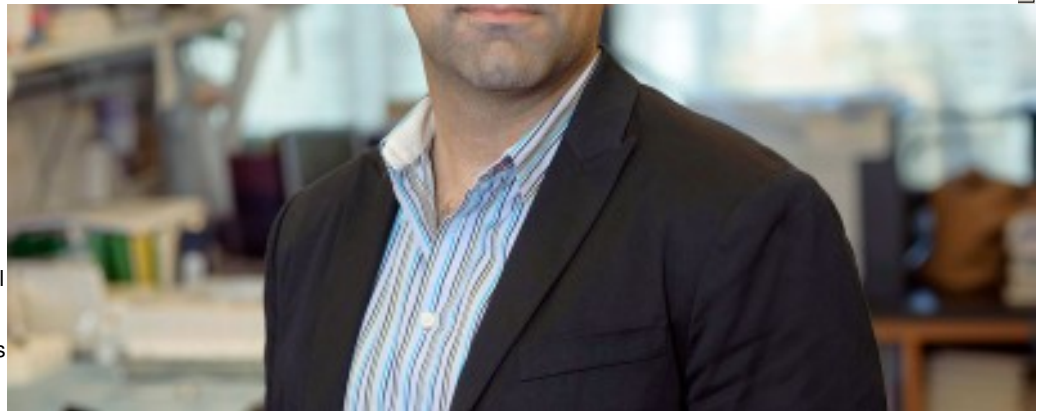
[Equality, diversity & inclusion](#)

[Annual report](#)

[Give to MSK](#)

cancer research. In unifying these transformational fields, we aim to answer fundamental questions in cancer biology and rapidly translate preclinical discovery into clinical application — ultimately improving cancer prevention, detection, and treatment.

The center is founded on the principle of multidisciplinary translational research and will support faculty from diverse areas pursuing technology-based methods. CMIB encourages collaborative integration across the cutting-edge research environment at MSK, empowering scientists and physicians alike by providing them with the tools necessary to pursue their most challenging ideas.



Biochemist and bioengineer Kayvan Keshari leads the Center for Molecular Imaging and Bioengineering at MSK.

Our Leadership and Faculty

Under the leadership of biochemist and bioengineer [Kayvan R. Keshari](#), CMIB will promote the expansion and application of technological capabilities, creating a new approach to cancer research and propelling MSK to the forefront of cancer engineering.

To achieve our goals, CMIB will foster deep ties between technology experts and faculty by establishing multidisciplinary teams with diverse but interrelated projects directed toward the common goal of applying molecular imaging and engineering principles to transformative questions — and unmet patient needs — in oncology.

We invite researchers and physicians working in cancer biology, medicine, chemistry, developmental biology, physics, radiochemistry, immunology, genomics, pharmacology, and engineering to join our center.

Internal Advisory Committee

Our internal advisory committee comprises the following MSK leaders:

[Michael Overholtzer](#), Dean, Gerstner Sloan Kettering Graduate School

[Jason Lewis](#), Emily Tow Jackson Chair in Oncology

[Hedvig Hricak](#), Chair, Department of Radiology

[Anna-Katerina Hadjantonakis](#), Chair, Developmental Biology Program, Sloan Kettering Institute

[Daniel Heller](#), Head, Cancer Nanotechnology Laboratory, Sloan Kettering Institute

Call to Prospective Members

Our program is open to all members of the MSK community who would benefit from accessing CMIB grants and shared resources. We support the development of new talent by helping to recruit faculty, postdocs, and students with a keen interest in molecular imaging and engineering into various MSK programs.

Pilot Research Grants

To disseminate and cultivate imaging and engineering sciences into cancer biology research at MSK, CMIB sponsors pilot research grants and has established a technology fund to support lab heads and core facilities with acquiring advanced tools and technological resources.

Education and Training Initiatives

CMIB will foster education through several new and established training programs.

Tow Foundation Fellowship Program

+

Molecular Imaging in Cancer Biology Training Program

+

The City College of New York-Memorial Sloan Kettering Cancer Center Partnership

+

Gerstner Sloan Kettering PhD in Cancer Engineering

+

Molecular Imaging Summer Program

+

Engineering Summer Program

+

NEXT

[The Tow Foundation Fellowship Program](#)

▼ Connect

[Contact us](#)

[Locations](#)

APPOINTMENTS

800-525-2225



▼ About MSK

[About us](#)

[Careers](#) ■

[Giving](#) ■

▼ Cancer Care

[Adult cancer types](#)

[Child & teen cancer types](#)

[Integrative medicine](#)

[Nutrition & cancer](#)

[Find a doctor](#)

▼ Research & Education

[Sloan Kettering Institute](#)

[Gerstner Sloan Kettering Graduate School](#) ■

[Graduate medical education](#)

[MSK Library](#) ■

[Communication preferences](#)

[Cookie preferences](#)

[Legal disclaimer](#)

[Accessibility statement](#)

[Privacy policy](#)

[Price transparency](#)

[Public notices](#)

© 2024 Memorial Sloan Kettering Cancer Center