

Ready to start planning your care? Call us at [800-525-2225](tel:800-525-2225) to make an appointment.

×



Memorial Sloan Kettering  
Cancer Center

[Make an Appointment](#)  
[Back](#)

[About Our Mission, Vision & Treatment Research Programs](#)  
[Learn About Cancer & Treatment](#)

## ABOUT US

[Our mission, vision & core values](#)

[Leadership](#)

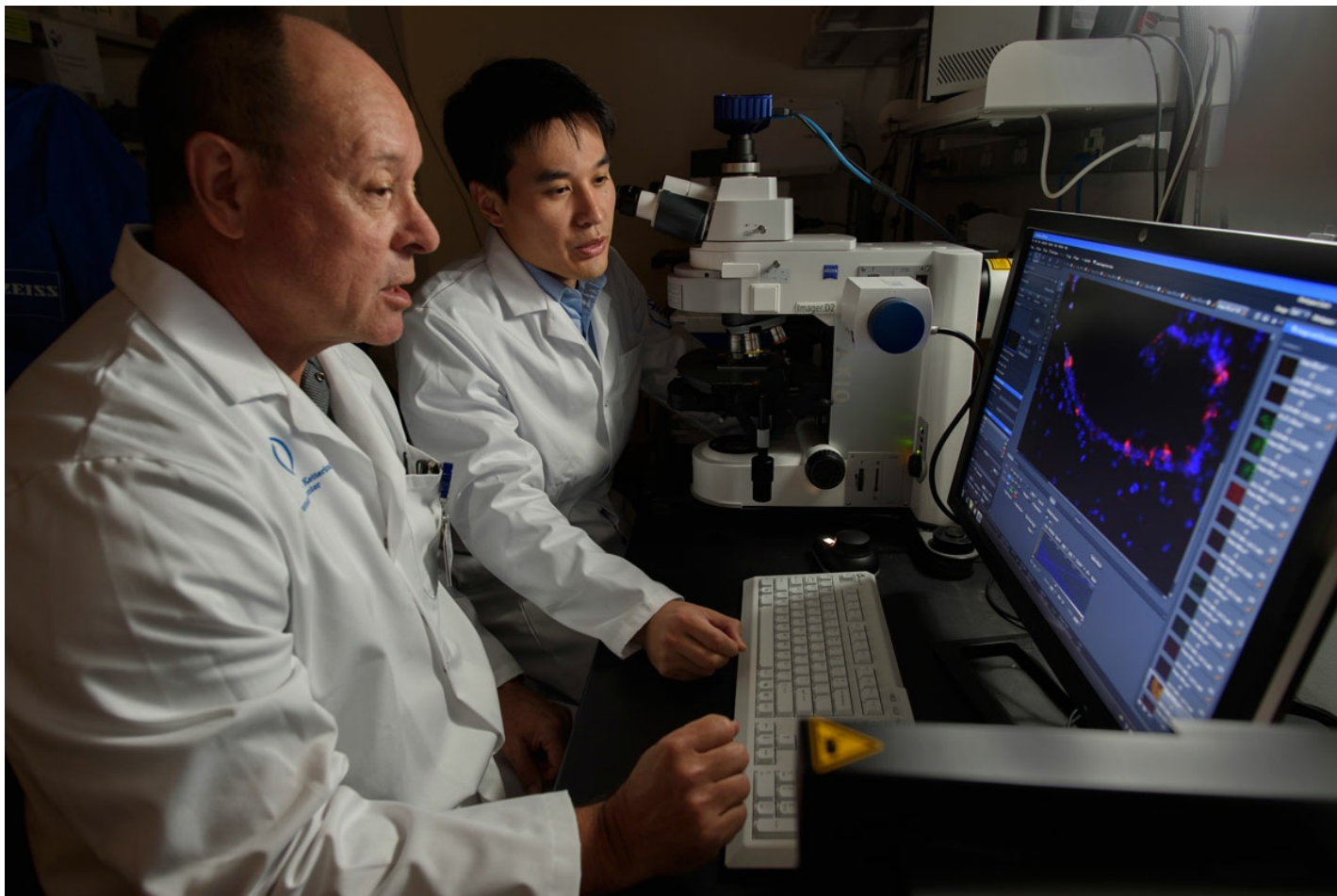
[History](#)

[Inclusion & belonging](#)

[Annual report](#)

[Give to MSK](#)

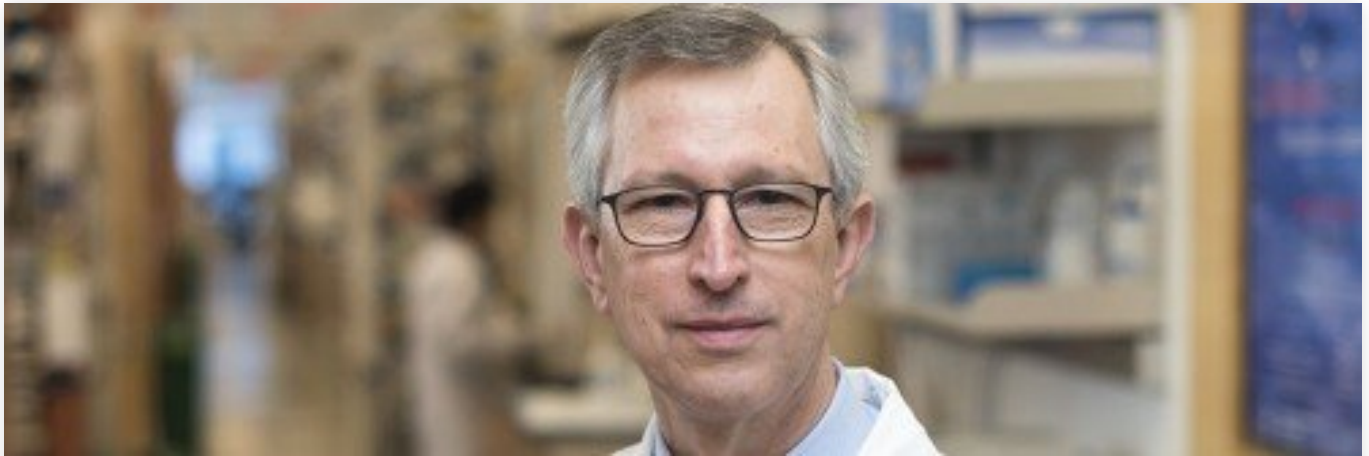
FOR THE MEDIA



Luis Parada leads the Brain Tumor Center, which brings physicians and scientists together to find better treatments for malignant brain tumors.

Memorial Sloan Kettering's collaborative research centers draw on the breadth of our scientific expertise, bringing together laboratory investigators and clinicians from different disciplines to focus on strategically important areas of cancer science. Our goal is to advance the current understanding of cancer biology and explore new ways to cure, control, and prevent disease.

[Learn more about our collaborative research centers.](#)



[The Alan and Sandra Gerry Metastasis and Tumor Ecosystems Center](#)



[Brain Tumor Center](#)



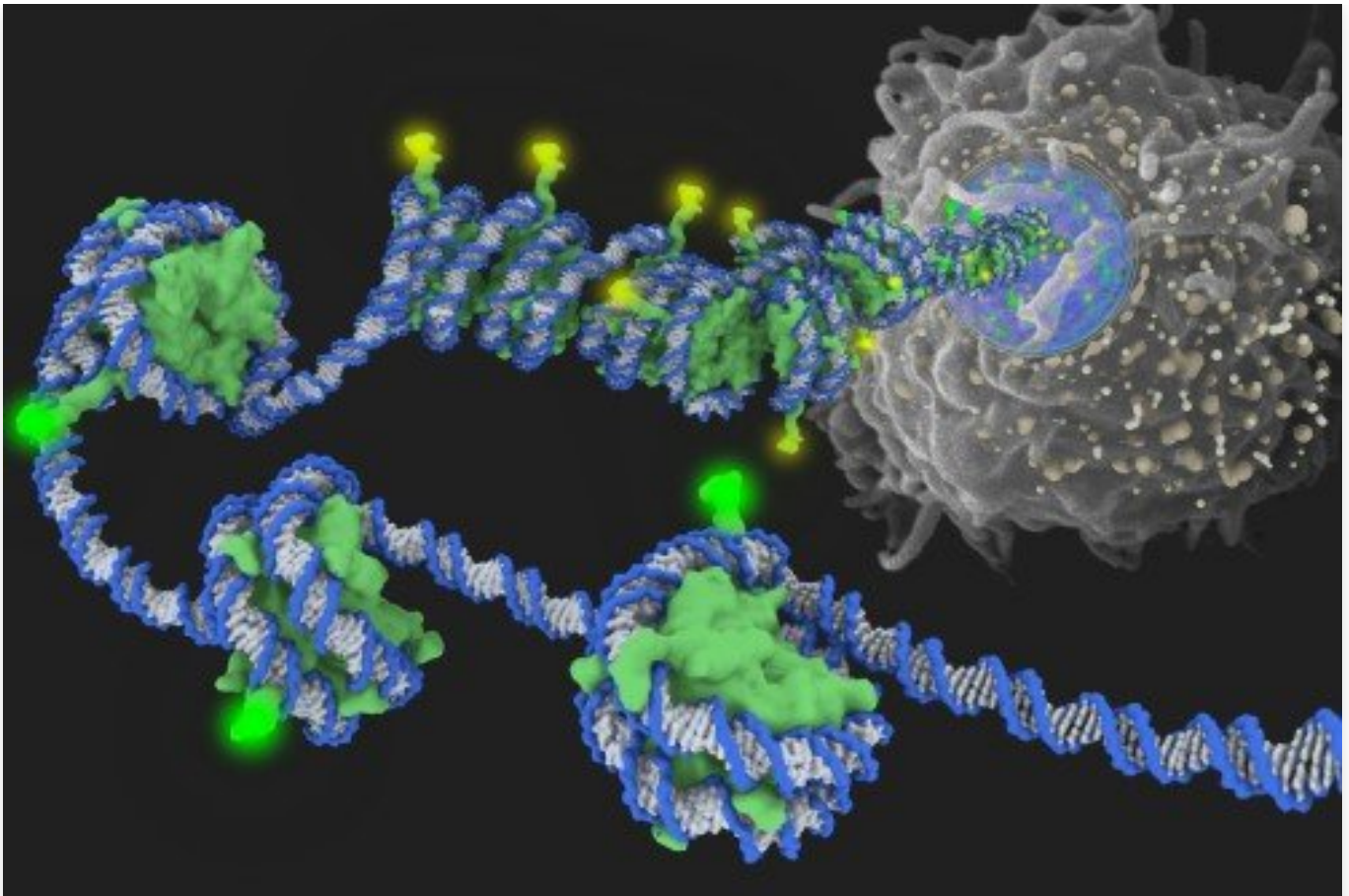
[Center for Tumor-Immune Systems Biology](#)



## [Center for Cell Engineering](#)



## [Center of Comparative Medicine & Pathology](#)



[Center for Epigenetics Research](#)



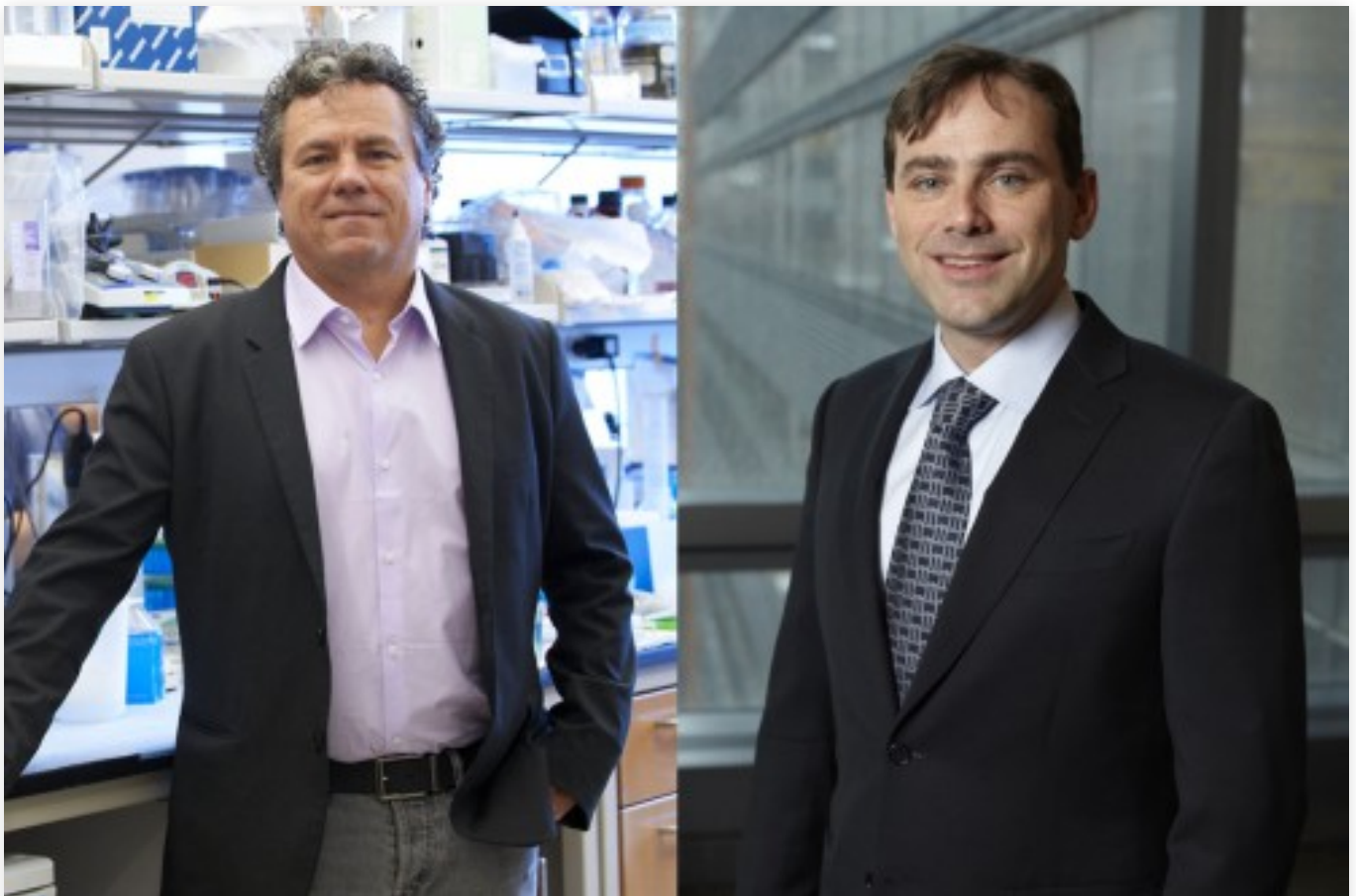
## [Center for Experimental Therapeutics](#)



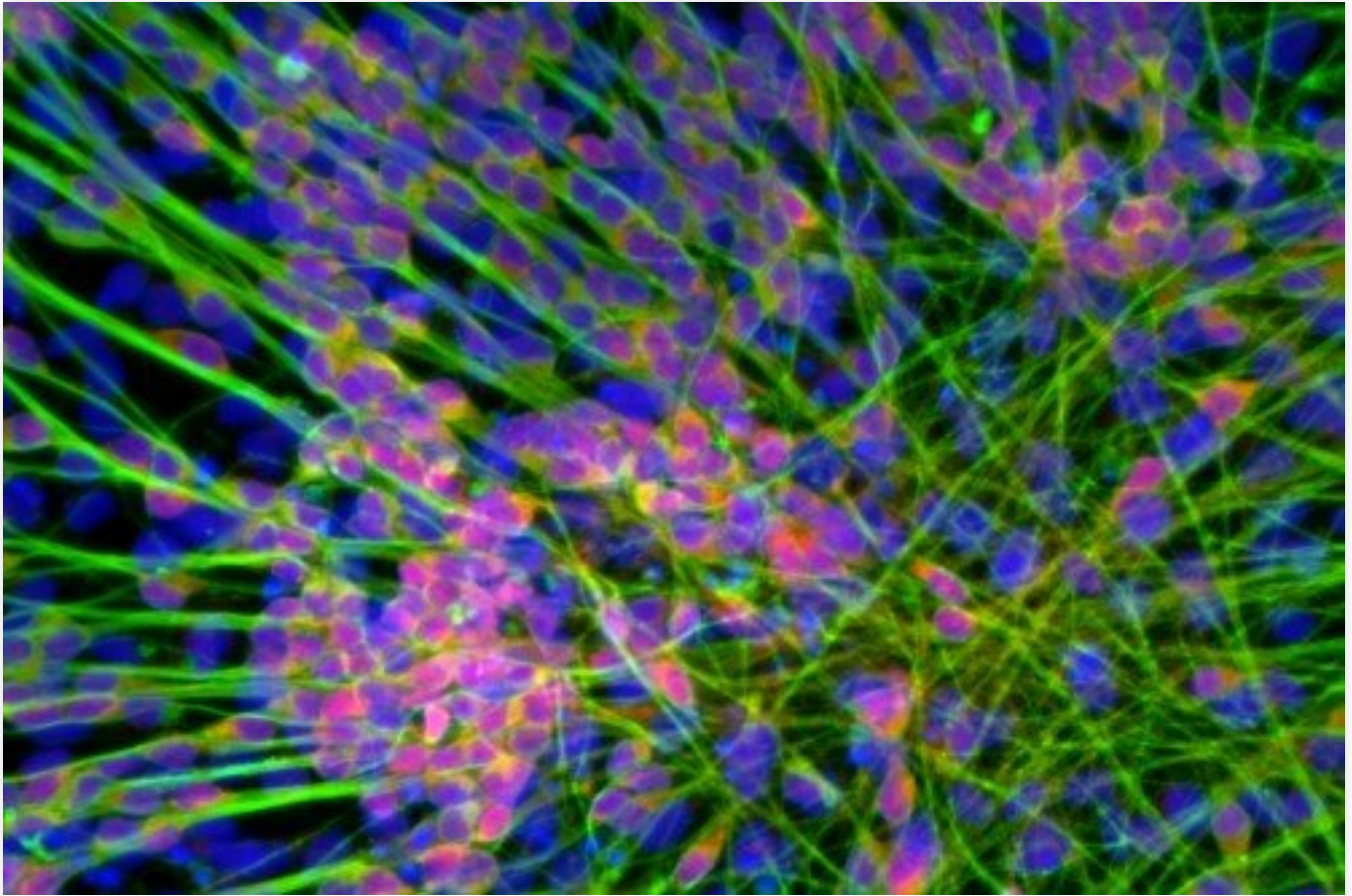
## [Center for Hematologic Malignancies](#)



[Center for Molecular Imaging & Bioengineering](#)



[Center for Precision Disease Modeling](#)



[Center for Stem Cell Biology](#)



[David M. Rubenstein Center for Pancreatic Cancer Research](#)



## [Fiona and Stanley Druckenmiller Center for Lung Cancer Research](#)



## [The Functional Genomics Initiative](#)



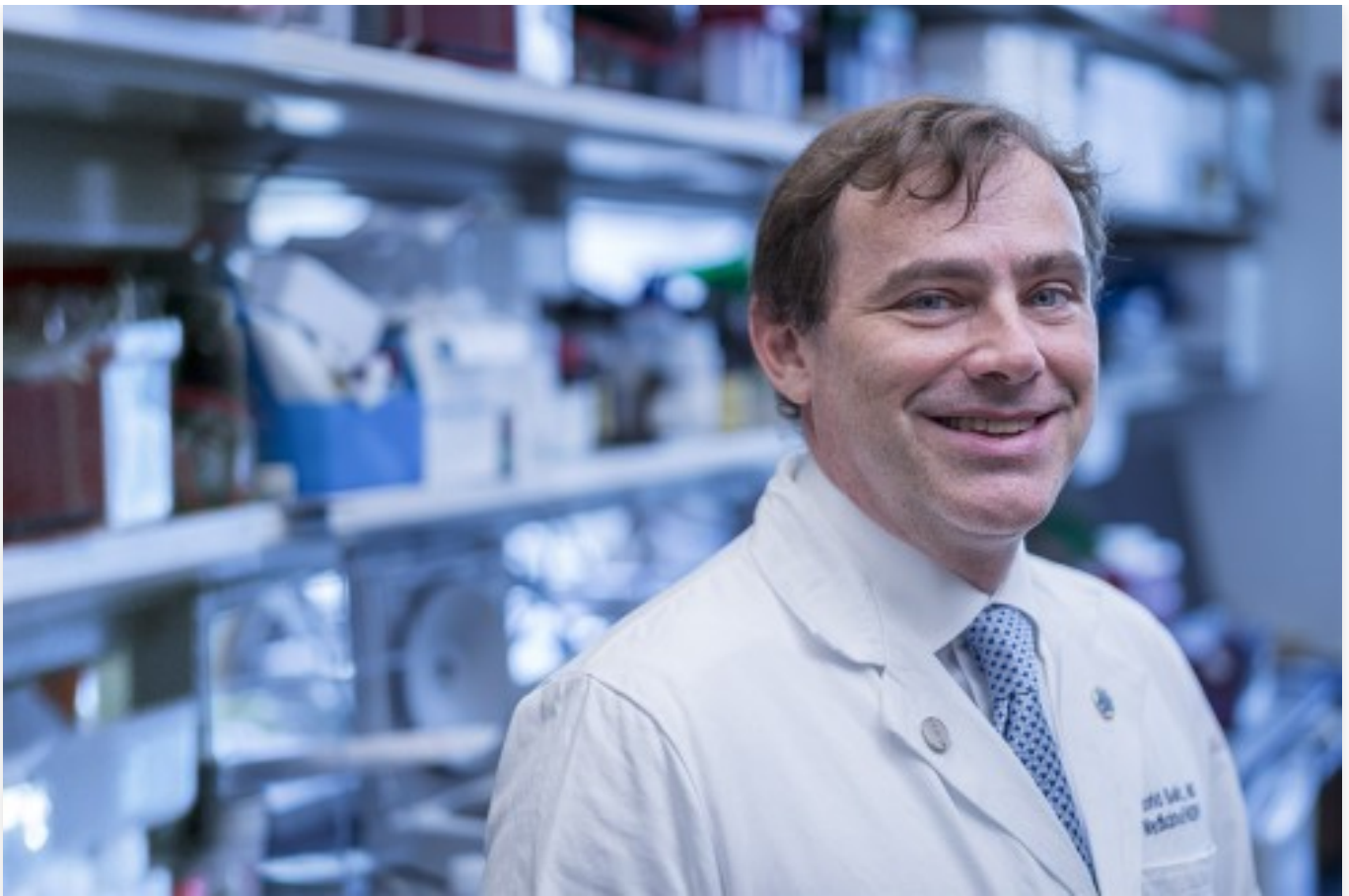
[Geoffrey Beene Cancer Research Center](#)



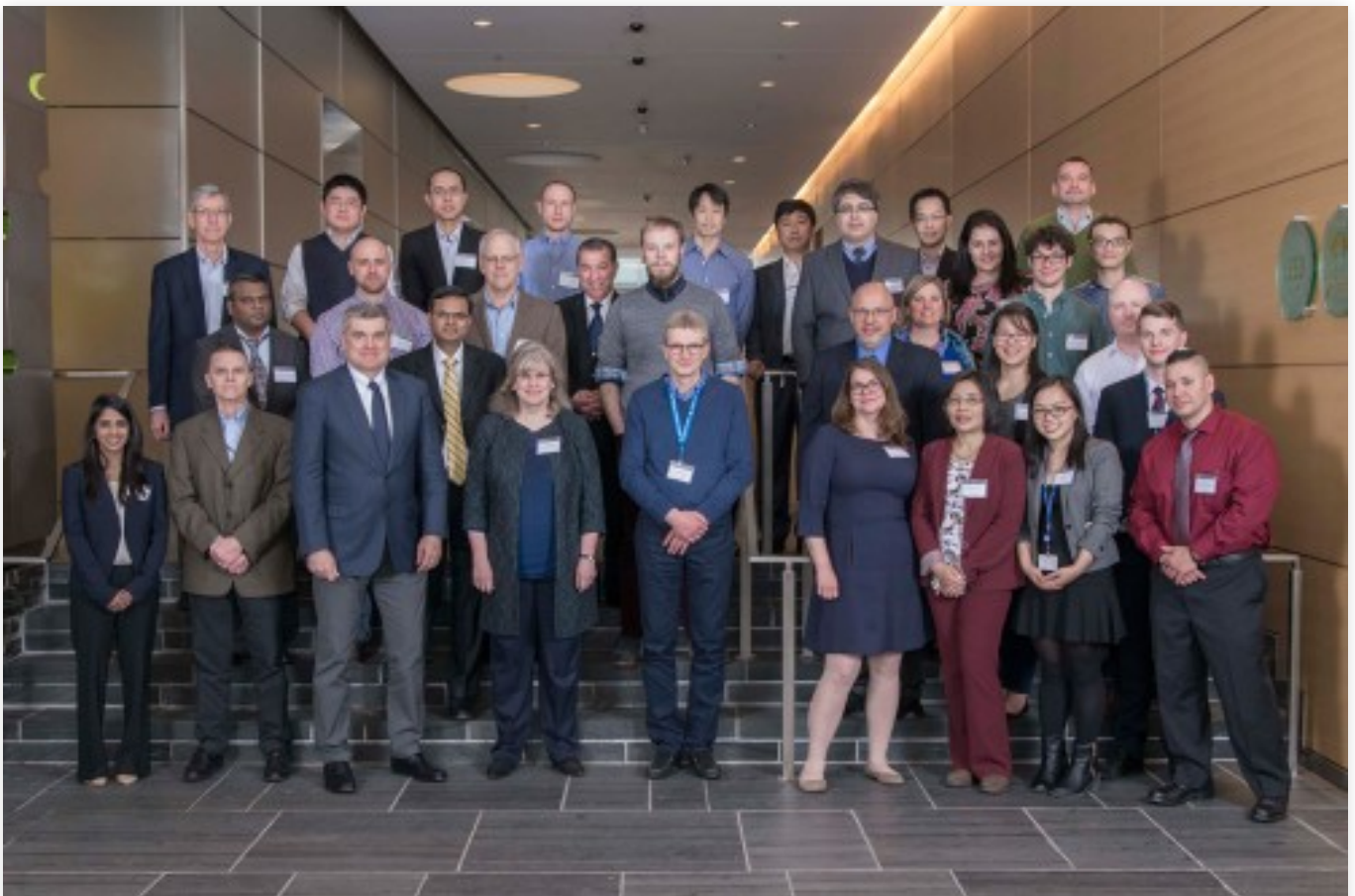
[Ludwig Center for Cancer Immunotherapy](#)



[The Marie-Josée and Henry R. Kravis Cancer Ecosystems Project](#)



[Marie-Josée and Henry R. Kravis Center for Molecular Oncology](#)





[Population Sciences Research \(PSR\)](#)



[Robert and Kate Niehaus Center for Inherited Cancer Genomics](#)



## [Precision Interception and Prevention \(PIP\) Program](#)



## [The Center for Experimental Immuno-Oncology](#)



[Tow Center for Developmental Oncology](#)



## [The Sarcoma Center at Memorial Sloan Kettering](#)



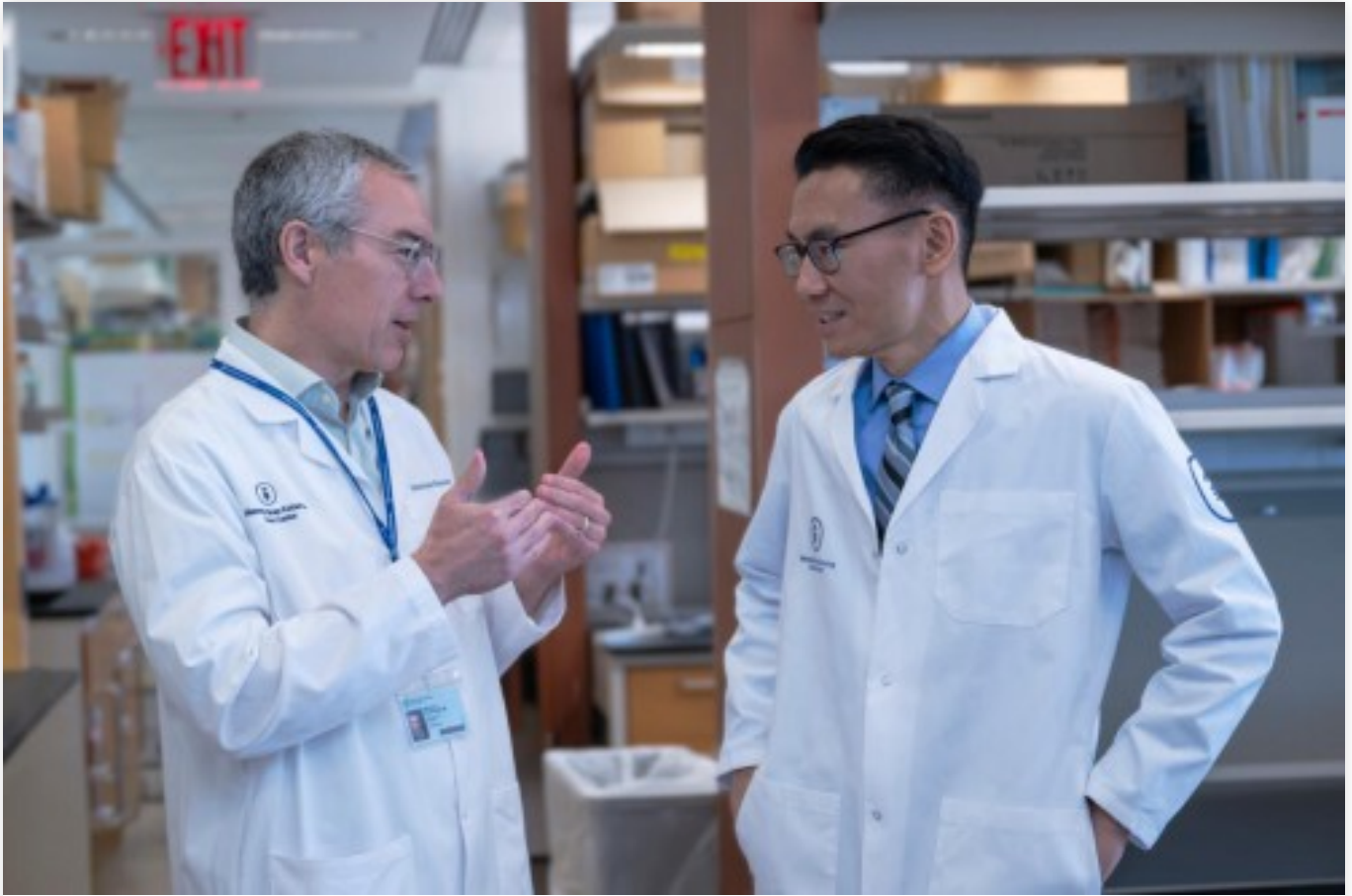
## [Colorectal Cancer Research Center](#)



[The Halvorsen Center for Computational Oncology](#)



## [The Olayan Center for Cancer Vaccines at MSK](#)



## [The Marie-Josée Kravis Center for Cancer Immunobiology](#)

© 2026 Memorial Sloan Kettering Cancer Center