

Ready to start planning your care? Call us at [800-525-2225](tel:800-525-2225) to make an appointment.

×



Memorial Sloan Kettering  
Cancer Center

[Make an Appointment](#)

[Back](#)

[Find a Doctor](#) [Find a Clinical Trial](#) [Find a Treatment](#)

[Research Topics](#) [Learn About Cancer & Treatment](#)

## ABOUT US

[Our mission, vision & core values](#)

[Leadership](#)

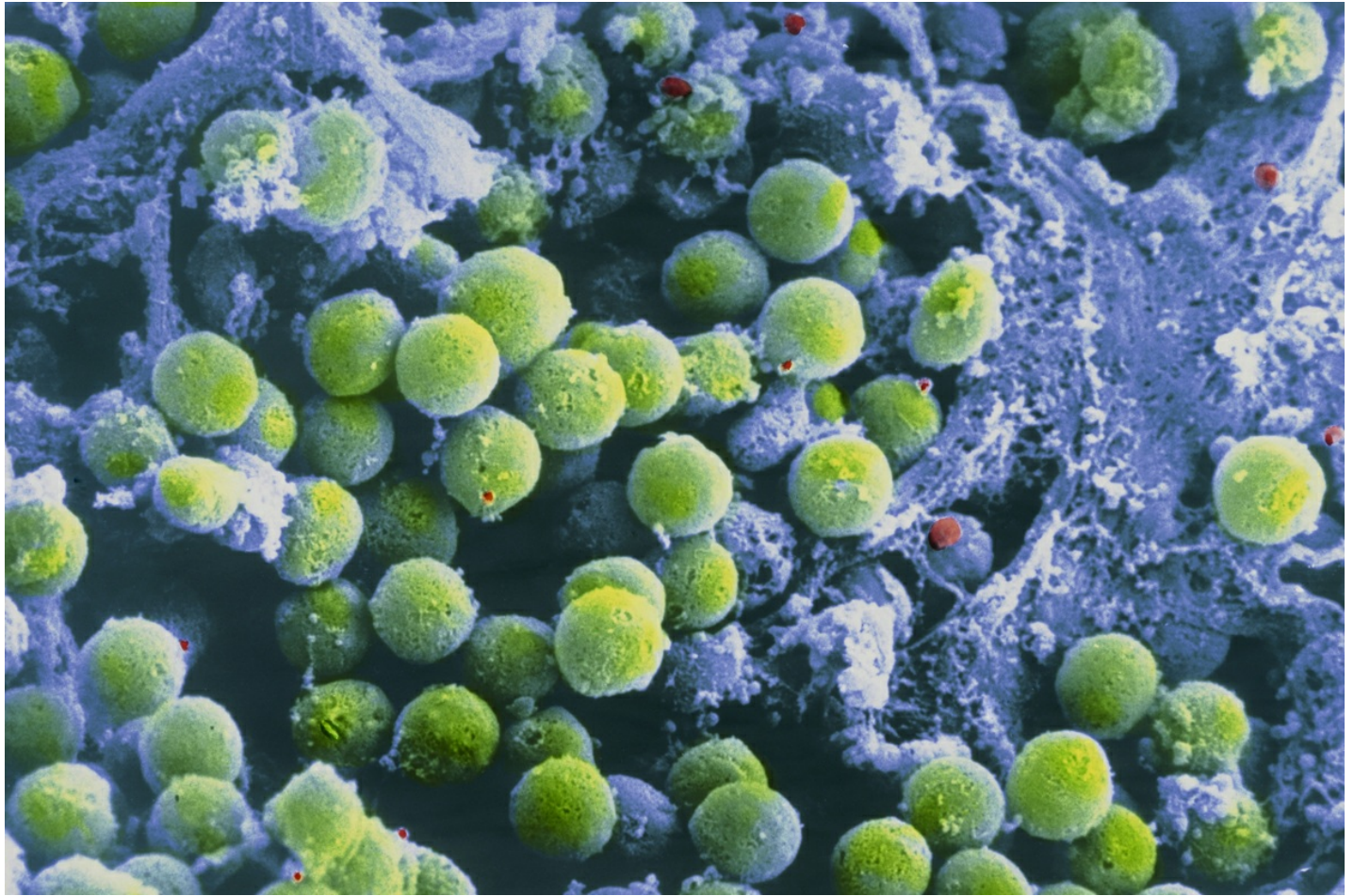
[History](#)

[Inclusion & belonging](#)

[Annual report](#)

[Give to MSK](#)

FOR THE MEDIA



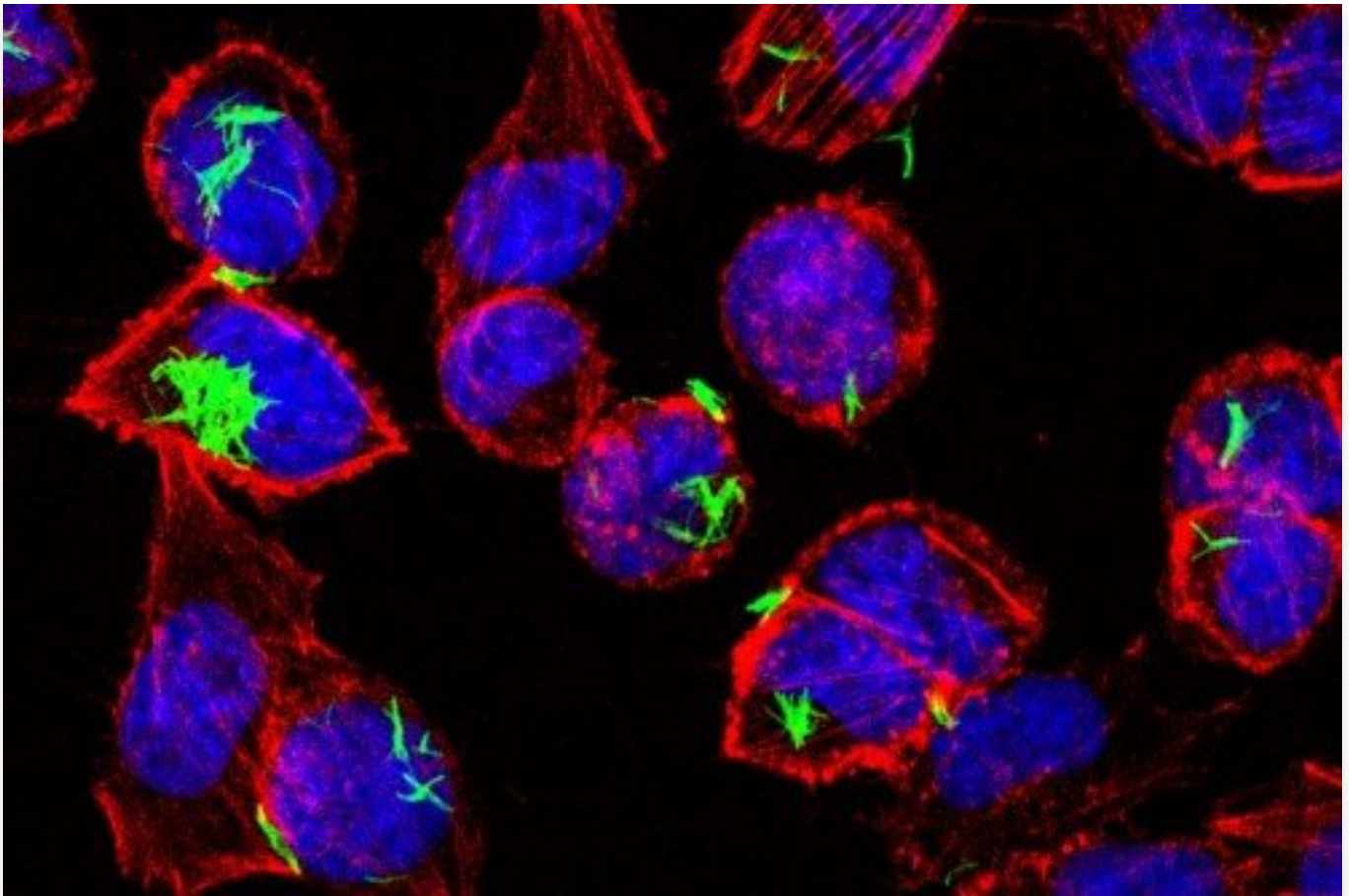
Developing white blood cells called T cells on the surface of the thymus. T cells defend the body from foreign intruders such as bacteria, viruses, and fungi, and may also protect against cancer.

The immune system is comprised of a complex, interacting set of cells and molecules that protect against disease. Our researchers are exploring many aspects of this network — including [cell signaling](#) , antigen processing, cancer [immunology](#) , infection and immunity, and [cell-based therapies](#) — with the goal of developing effective new treatments for cancer and other diseases.

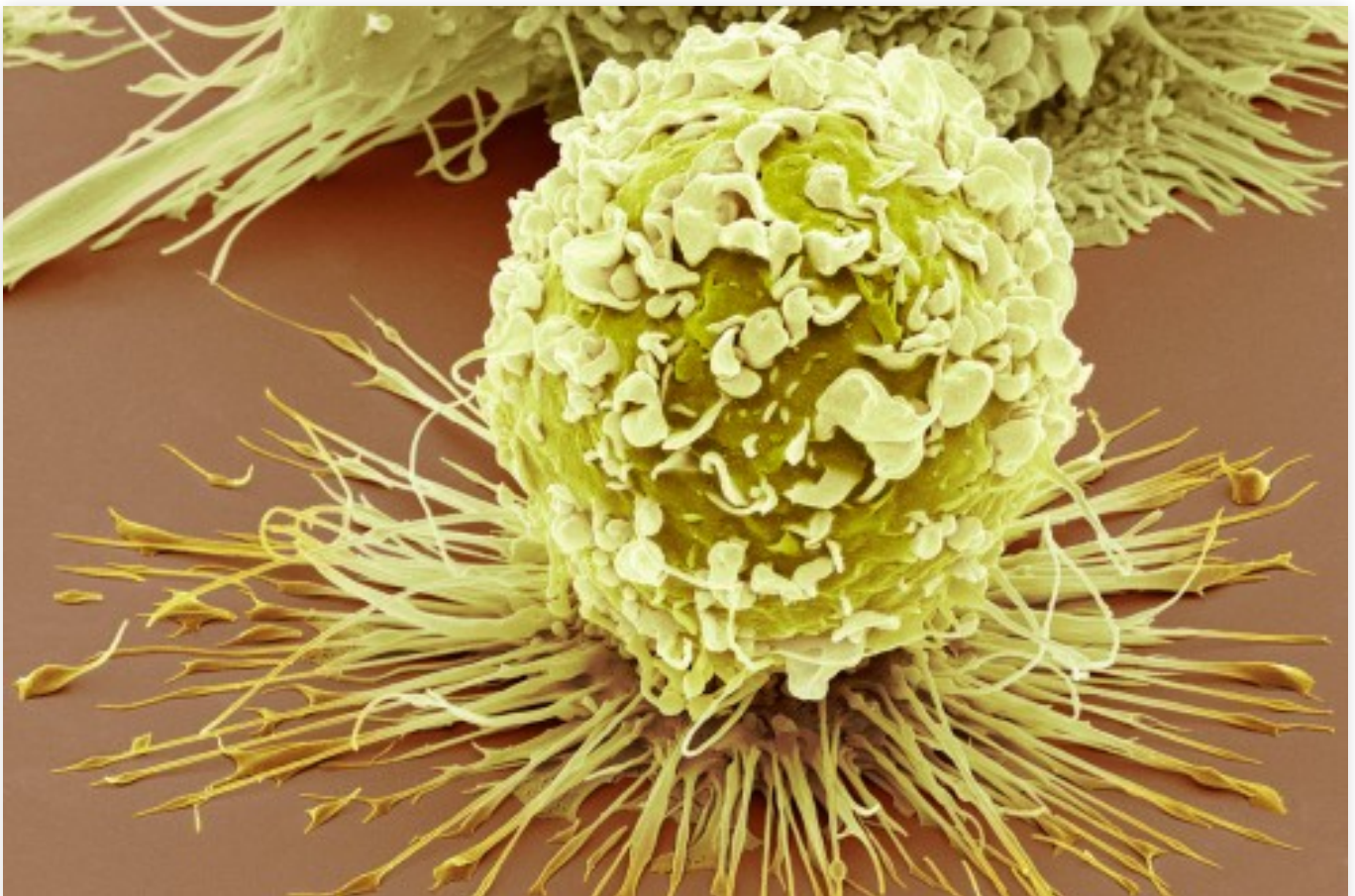


[Find the related labs](#)





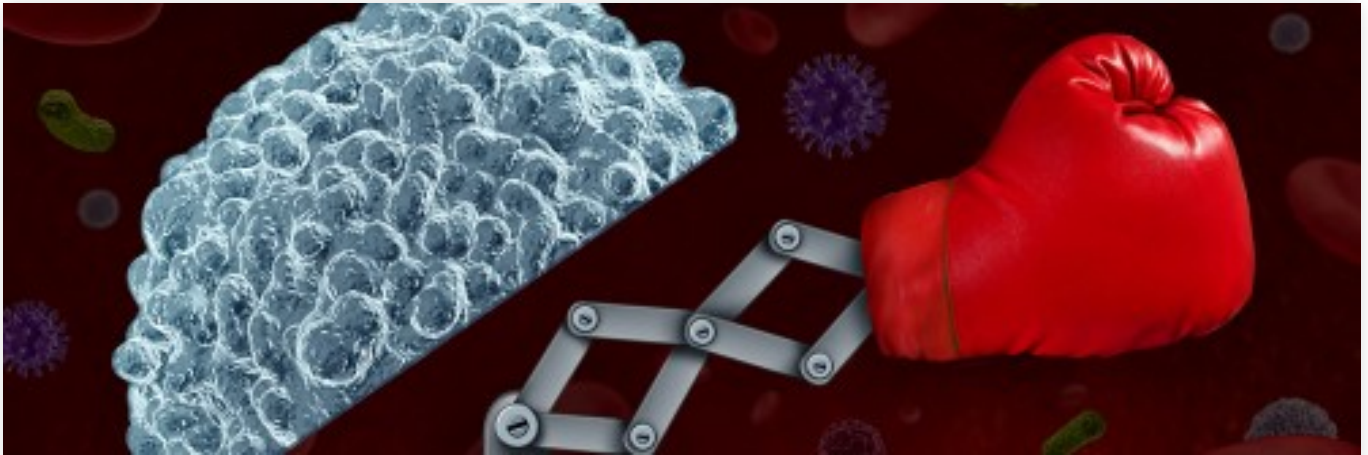
[Immunology Program](#)



## [Researchers Reveal How Tumors Manipulate Certain Immune Cells to Their Own Advantage](#)



[At Work: Immunologist Joseph Sun](#)



[New Approach Could Boost Immunotherapy for Breast Cancer](#)

© 2025 Memorial Sloan Kettering Cancer Center