

Ready to start planning your care? Call us at [800-525-2225](tel:800-525-2225) to make an appointment.

×



Memorial Sloan Kettering
Cancer Center

[About Us](#)
[Sloan Kettering Institute](#)

MOLECULAR PHARMACOLOGY PROGRAM

[Research](#)

The Jan Grimm Lab

[Education & Training](#)

Molecular Pharmacology Program
[News & Events](#)

Research
[Open Positions](#)



Jan Grimm, MD, PhD

The Grimm lab in the Molecular Pharmacology Program focuses on the development of novel and innovative approaches for cancer diagnostics and therapy. These approaches evaluate underlying biology and utilize nanotechnology, chemistry and physics interrogated with modern imaging methods. The lab focuses currently several avenues: (i) the utilization of nanoparticles for cancer therapy; (ii) novel imaging approaches such as Cerenkov and optoacoustic imaging and (iii) the biology of PSMA both in prostate cancer and neovasculature using a tumor-on-chip microfluidic chip system.

[View Lab Overview](#) →

Research Projects

The Jan Grimm Lab

[Smart Imaging Agents](#)

[Prostate Cancer Imaging & Prostate-Specific Membrane Antigen \(PSMA\)](#)

[Cerenkov Imaging](#)



Featured News



[Move Over, Mice: Caterpillars Could Replace Some Mammals in the Study of Human Disease](#)

How scientists are working to develop nonmammalian alternatives that could reduce the number of rodents used in biomedical research.

IN THE CLINIC



[New Imaging Technique Could Improve Cancer Screening and Diagnosis in Developing Countries and Rural Areas](#)

A new imaging approach relying on Cerenkov light could sometimes substitute for PET scans and improve diagnostic services in underserved areas.

IN BRIEF



[Can You Hear Me Now? Scientists Find Nanoparticles Have a Language of Their Own](#)

Nanoparticles were thought of a silent partner in imaging technologies. They're now being recognized as an important source of subatomic chatter.

[View All Featured News](#)

Publications Highlights

Quo Vadis, Molecular Imaging? Grimm J, Kiessling F, Pichler BJ. J Nucl Med. 2020 Oct;61(10):1428-1434. doi: 10.2967/jnumed.120.241984. Epub 2020 Aug 28. PMID: 32859706.

Synthesis of the PET Tracer ¹²⁴I-Trametinib for MAPK/ERK Kinase Distribution and Resistance Monitoring. Pratt EC, Isaac E, Stater EP, Yang G, Ouerfelli O, Pillarsetty N, Grimm J. J Nucl Med. 2020 Dec;61(12):1845-1850. doi: 10.2967/jnumed.120.241901. Epub 2020 May 22. PMID: 32444378.

[View All Publications](#)

People





Jan Grimm, MD, PhD

Radiologist and Nuclear Medicine physician Jan Grimm develops novel approaches for improved diagnosis, monitoring and therapy of prostate and other cancers.


MD, University of Hamburg (Germany)

PhD, University of Kiel (Germany)

 grimmj@mskcc.org
Email Address

 [646-888-3095](tel:646-888-3095)
Office Phone

 [Download CV](#)
PDF File

 [View physician profile](#)
Physician profile

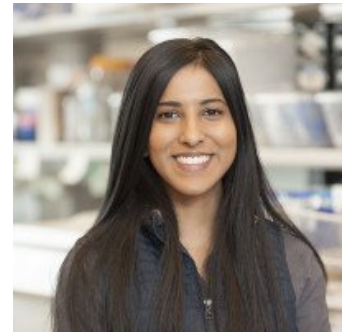
Members

Jan Grimm
Member/Professor

Anuja Ogirala
Senior Research Assistant

Elana Apfelbaum
Graduate Student - Cornell
Pharmacology

Natalie Boykoff
Graduate Student - CCNY



Elizabeth Isaac

Graduate Student- Cornell
Pharmacology

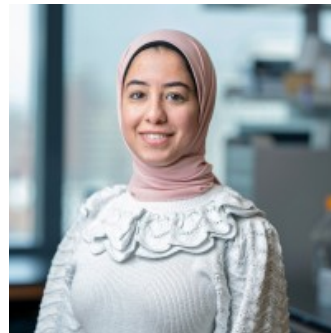
Daniella Jimenez

NE Student



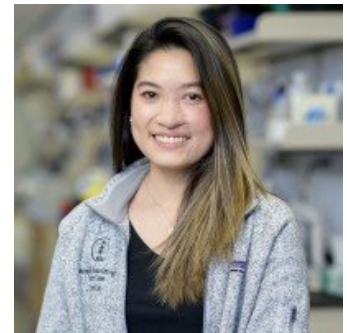
Benedict McLarney

Research Scholar



Nermin Mostafa

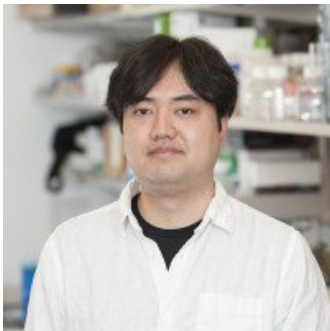
Research Technician



Ngan

Phung

Graduate Student- Cornell
Pharmacology



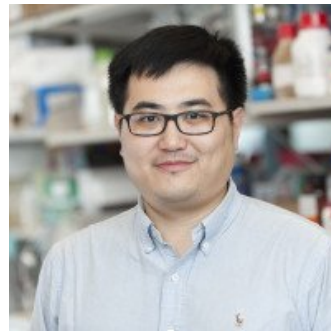
Ryo

Tamura

Postdoctoral Researcher

Abraham Teunissen

Research Fellow



Qize

Zhang

Graduate Student- Hunter
College

Lab Alumni

+

Lab Affiliations

+

Achievements

2014- NIH Nagy New Investigator Award

2018- The American Society for Clinical Investigation (ASCI) Member

Get in Touch

 grimmj@mskcc.org

Lab Head Email

 [646-888-3095](tel:646-888-3095)

Office Phone

 [646-888-3059](tel:646-888-3059)

Office Fax

 [646-888-3101](tel:646-888-3101)

Lab Phone

Disclosures

Doctors and faculty members often work with pharmaceutical, device, biotechnology, and life sciences companies, and other organizations outside of MSK, to find safe and effective cancer treatments, to improve patient care, and to educate the health care community.

MSK requires doctors and faculty members to report (“disclose”) the relationships and financial interests they have with external entities. As a commitment to transparency with our community, we make that information available to the public.

Jan Grimm discloses the following relationships and financial interests:

Gerson Lehrman Group

Professional Services and Activities

Society of Nuclear Medicine and Molecular Imaging

Professional Services and Activities

The information published here is for a specific annual disclosure period. There may be differences between information on this and other public sites as a result of different reporting periods and/or the various ways relationships and financial interests are categorized by organizations that publish such data.

This page and data include information for a specific MSK annual disclosure period (January 1, 2022 through disclosure submission in spring 2023). This data reflects interests that may or may not still exist. This data is updated annually.

Learn more about MSK’s COI policies [here](#). For questions regarding MSK’s COI-related policies and procedures, email MSK’s Compliance Office at ecoi@mskcc.org.

▼ About Us

[Overview](#)

[Leadership](#)

[Administration](#)

[History](#)

[Contact Us](#)



▼ Research

[Overview](#)

[Research programs](#)

[Research labs](#)

[Core facilities & resources](#)

▼ Education & Training

[Overview](#)

[Postdoctoral training](#)

[Gerstner Sloan Kettering Graduate School](#)

[Joint graduate programs](#)

[Programs for college & high school students](#)

▼ News & Events

[Overview](#)

[Seminars & events](#)

▼ Open Positions

[Overview](#)

[Faculty positions](#)

[Postdoctoral positions](#)

[Communication preferences](#)

[Cookie preferences](#)

[Legal disclaimer](#)

[Accessibility Statement](#)

[Privacy policy](#)

[Public notices](#)

© 2024 Memorial Sloan Kettering Cancer Center