

Ready to start planning your care? Call us at [800-525-2225](tel:800-525-2225) to make an appointment.

×



Memorial Sloan Kettering  
Cancer Center

[Make an Appointment](#)

[← Back](#)

MEMORIAL HOSPITAL RESEARCH LABORATORIES

[Patient & Family Center](#) [Patient & Family Center & Treatment](#)

[Refer a Patient](#)

## The Jason Lewis Lab

### ABOUT US

[Our mission, vision & core values](#)

[Leadership](#)

[History](#)

[Equality, diversity & inclusion](#)

[Annual report](#)

[Give to MSK](#)

-----



Jason S. Lewis, PhD  
Emily Tow Chair in Oncology

---

The Lewis lab research interests are focused on the development of radiopharmaceuticals for targeted diagnosis and treatment of cancer. By combining small- and biomolecule-based targeting agents with positron-emitting or therapeutic radioisotopes, we can interrogate molecular profiles of cancer using noninvasive nuclear imaging or treat tumors specifically with endoradiotherapy. Our research program is a molecular-imaging-based program focused on the targeting of nonstandard nuclides, with an emphasis on developing these novel radiopharmaceuticals for clinical translation. A few examples of our work are given below.

[View Lab Overview](#) →



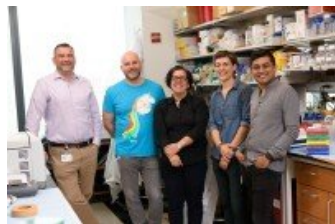
**Featured News**



[At Work: Radiochemistry Service Chief Jason Lewis](#)

Radiochemist Jason Lewis works to develop new radiopharmaceuticals used in diagnosing and treating cancer.

FEATURE



[Out of the Closet, into the Lab: Five LGBTQ Scientists Share Their Stories](#)

What's it like being LGBTQ in the world of science? We asked some MSK scientists to find out.

#### IN THE CLINIC



### [How Our New Particle Accelerator Will Make Cancer Imaging and Treatment More Precise](#)

The launch of a 20-ton instrument and a facility for producing radioactive imaging molecules will allow our doctors and scientists to monitor cancers in unparalleled detail.

[View All Featured News](#)

## Publications Highlights

[Nagle VL, Henry KE, Hertz CAJ, Graham MS, Campos C, Parada LF, Pandit-Taskar N, Schietinger A, Mellinghoff IK, Lewis JS. Imaging Tumor-Infiltrating Lymphocytes in Glioblastoma with \[<sup>64</sup>Cu\]Cu-NOTA-anti-CD8-PET. Clinical Cancer Research, 27, 1958-1966, 2021.](#)

[Sharma SK, Suzuki M, Xu H, Korsen JA, Samuels Z, Guo H, Nemieboka B, Piersigilli A, Edwards KJ, Cheung NKV, Lewis JS. Influence of Fc modifications on biodistribution of humanized antibodies targeting L1CAM. Journal of Nuclear Medicine, 63, 629-636, 2022.](#)

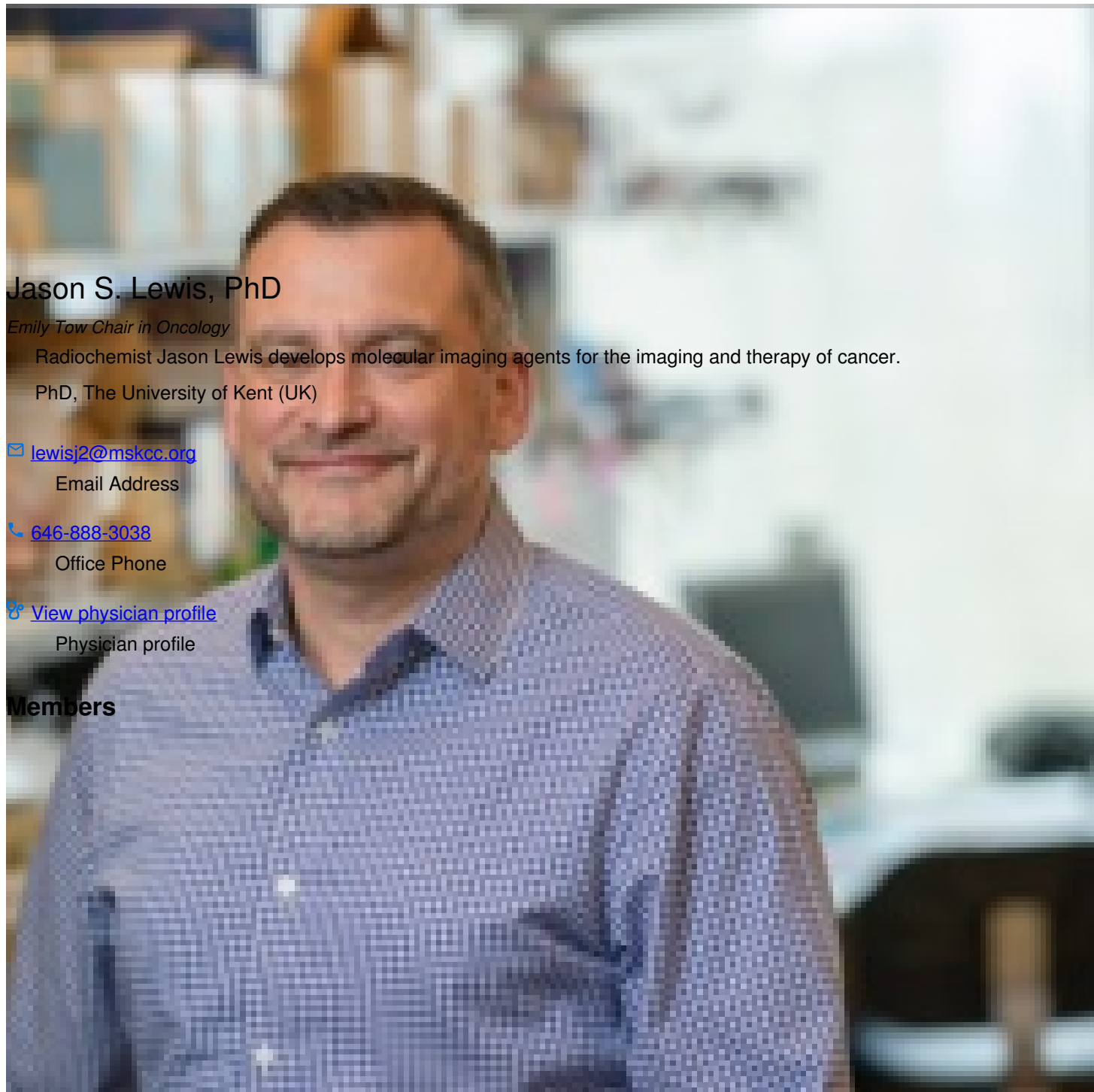
[Tully KM, Tendler S, Carter LM, Sharma SK, Samuels ZV, Mandleywala K, Korsen JA, Delos Reyes AM, Piersigilli A, Travis WD, Sen T, Pillarsetty N, Poirier JT, Rudin CM, Lewis JS. Radioimmunotherapy Targeting Delta-like Ligand 3 in Small Cell Lung Cancer Exhibits Antitumor Efficacy with Low Toxicity. Clinical Cancer Research, 28, 1391-1401, 2022.](#)

[Korsen JA, Kalidindi TM, Khitrov S, Samuels ZV, Chakraborty G, Gutierrez JA, Poirier JT, Rudin CM, Chen Y, Morris MJ, Pillarsetty NVK, Lewis JS. Molecular imaging of Neuroendocrine Prostate Cancer by targeting Delta-like Ligand-3. Journal of Nuclear Medicine, 63, 1401-1407, 2022.](#)

[Pereira PMR, Mandleywala K, Monette S, Lumish M, Tully KM, Panikar SS, Cornejo M, Mauguen A, Ragupathi A, Keltee NC, Mattar M, Janjigian YY, Lewis JS. Caveolin-1 temporal modulation enhances antibody drug efficacy in heterogeneous gastric cancer. Nature Communications, 13, 2526, 2022.](#)

[View All Publications](#)

## People



## Jason S. Lewis, PhD

*Emily Tow Chair in Oncology*

Radiochemist Jason Lewis develops molecular imaging agents for the imaging and therapy of cancer.

PhD, The University of Kent (UK)

✉ [lewisj2@mskcc.org](mailto:lewisj2@mskcc.org)

Email Address

☎ [646-888-3038](tel:646-888-3038)

Office Phone

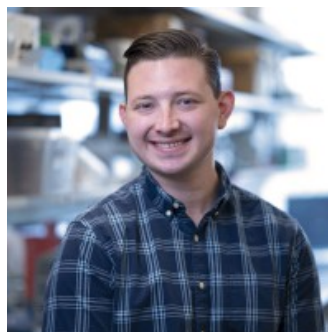
🔗 [View physician profile](#)

Physician profile

### Members

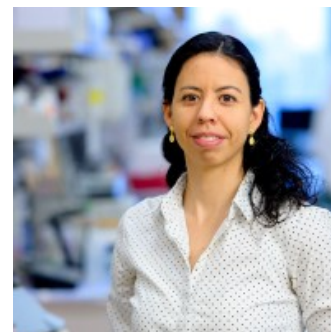
Research Fellow

Graduate Research  
Assistant



Kevin Fisher

Senior Administrative

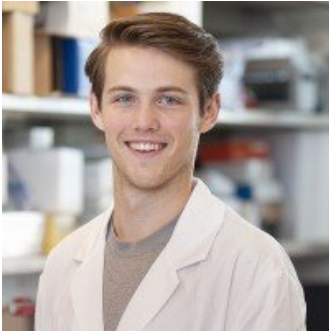


Moralba Dominguez  
Garcia



Assistant

Research Scholar



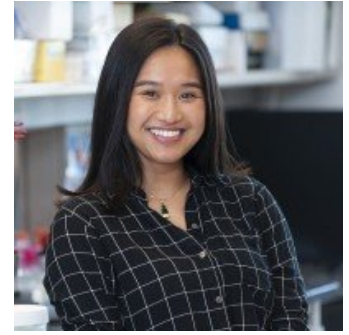
Justin Hachey  
Graduate Student



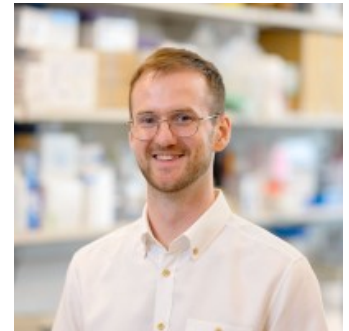
Shaniqua  
Hayes  
Research Fellow



Natalia Herrero  
Alvarez  
Research Scholar



Tran Hoang  
Graduate Student



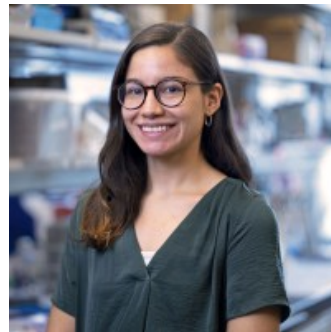
Aidan Ingham  
Research Scholar



Paul Klauser  
Research Fellow



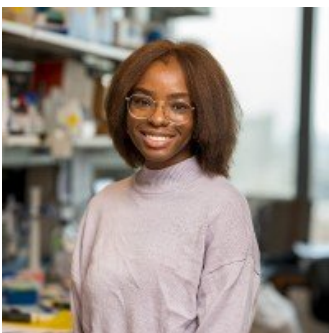
Simone Krebs  
Assistant Attending



Angelique Loor  
Lab Technician



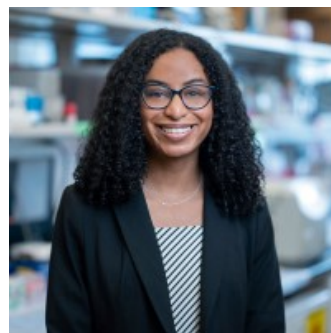
Kyearea Mack  
Graduate Student



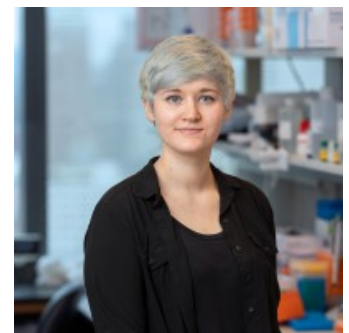
Olufolake  
Majekodunmi



Alexa  
Michel



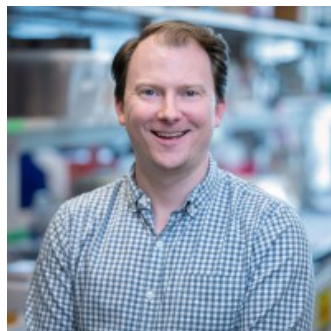
Candace Parker  
Research Scholar



Rachel  
Payne

Graduate Student

Research Technician



Edwin C. Pratt  
Research Scholar



Salomon Tendler  
Research Fellow



Darren  
Veach  
Associate Attending  
Chemist



Tara  
Viray  
Research Technician

Lab Alumni  
+

Lab Affiliations  
+

## Achievements

2023 ACS - Glenn T. Seaborg Award for Nuclear Chemistry  
2021 Gold Medal for Lifetime Achievement, World Molecular Imaging Society  
2020 American Chemical Society Bioconjugate Chemistry Lecture Award  
Paul C. Aebersold Award, ERF-SNMMI (2019)  
NCI R35 Outstanding Investigator Award (2019-2026)

Read more  
+

## Get in Touch

 [lewisj2@mskcc.org](mailto:lewisj2@mskcc.org)

Lab Head Email

 [646-888-3038](tel:646-888-3038)

Office Phone

## Disclosures

Doctors and faculty members often work with pharmaceutical, device, biotechnology, and life sciences companies, and other organizations outside of MSK, to find safe and effective cancer treatments, to improve patient care, and to educate the health care community.

MSK requires doctors and faculty members to report (“disclose”) the relationships and financial interests they have with external entities. As a commitment to transparency with our community, we make that information available to the public.

Jason S. Lewis discloses the following relationships and financial interests:

Alpha-9 Theranostics Inc.

Equity; Professional Services and Activities

CSRA Inc.

Professional Services and Activities

CheMatech

Intellectual Property Rights

Clarity Pharmaceuticals

Equity; Professional Services and Activities

Daiichi Sankyo

Intellectual Property Rights

Diaprost AB

Intellectual Property Rights

Earli Inc.

Professional Services and Activities

Elsevier

Professional Services and Activities

Elucida Oncology

Intellectual Property Rights

Evergreen Theragnostics

Equity; Professional Services and Activities (Uncompensated)

Inhibrx, Inc.

Professional Services and Activities

Journal of Nuclear Medicine

Professional Services and Activities

Nextech Venture, LTD



Professional Services and Activities

Samus Therapeutics LLC

Intellectual Property Rights

Suba Therapeutics, Inc.

Equity; Professional Services and Activities

Summit Biomedical Imaging, LLC

Equity

TPG Capital

Professional Services and Activities

Telix Pharmaceuticals Limited

Equity; Professional Services and Activities (Uncompensated)

Theragnostics, Ltd.

Intellectual Property Rights

Trace-Ability, Inc.

Equity

World Molecular Imaging Society

Professional Services and Activities

pHLIP, Inc.

Equity; Intellectual Property Rights; Professional Services and Activities

The information published here is for a specific annual disclosure period. There may be differences between information on this and other public sites as a result of different reporting periods and/or the various ways relationships and financial interests are categorized by organizations that publish such data.

---

This page and data include information for a specific MSK annual disclosure period (January 1, 2022 through disclosure submission in spring 2023). This data reflects interests that may or may not still exist. This data is updated annually.

Learn more about MSK's COI policies [here](#). For questions regarding MSK's COI-related policies and procedures, email MSK's Compliance Office at [ecoi@mskcc.org](mailto:ecoi@mskcc.org).

[View all disclosures](#) →

## Connect

[Contact us](#)

[Locations](#)

APPOINTMENTS

[800-525-2225](#)



## ▾ About MSK

[About us](#)

[Careers](#) 

[Giving](#) 

## ▾ Cancer Care

[Adult cancer types](#)

[Child & teen cancer types](#)

[Integrative medicine](#)

[Nutrition & cancer](#)

[Find a doctor](#)

## ▾ Research & Education

[Sloan Kettering Institute](#)

[Gerstner Sloan Kettering Graduate School](#) 

[Graduate medical education](#)

[MSK Library](#) 

---

[Communication preferences](#)

[Cookie preferences](#)

[Legal disclaimer](#)

[Accessibility statement](#)

[Privacy policy](#)

[Price transparency](#)

[Public notices](#)

© 2024 Memorial Sloan Kettering Cancer Center