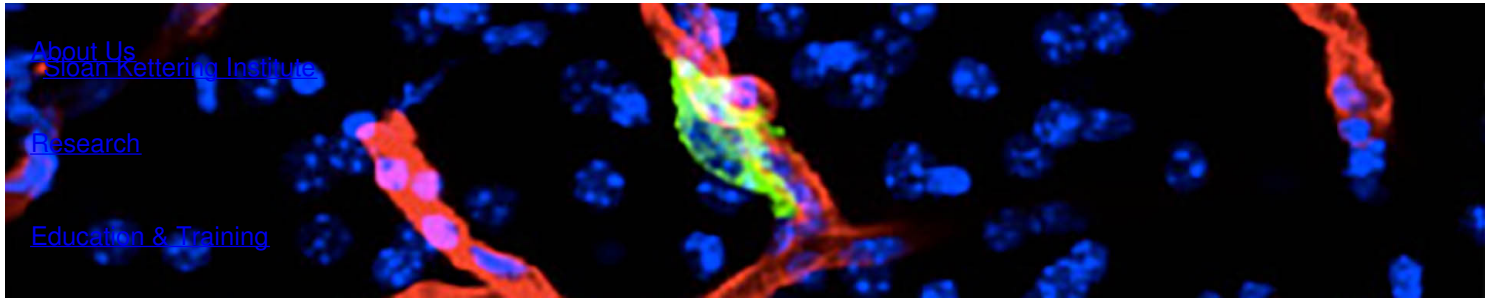


Ready to start planning your care? Call us at [800-525-2225](tel:800-525-2225) to make an appointment.

×



Memorial Sloan Kettering
Cancer Center



[About Us](#)
[Sloan Kettering Institute](#)

[Research](#)

[Education & Training](#)

[News & Events](#)

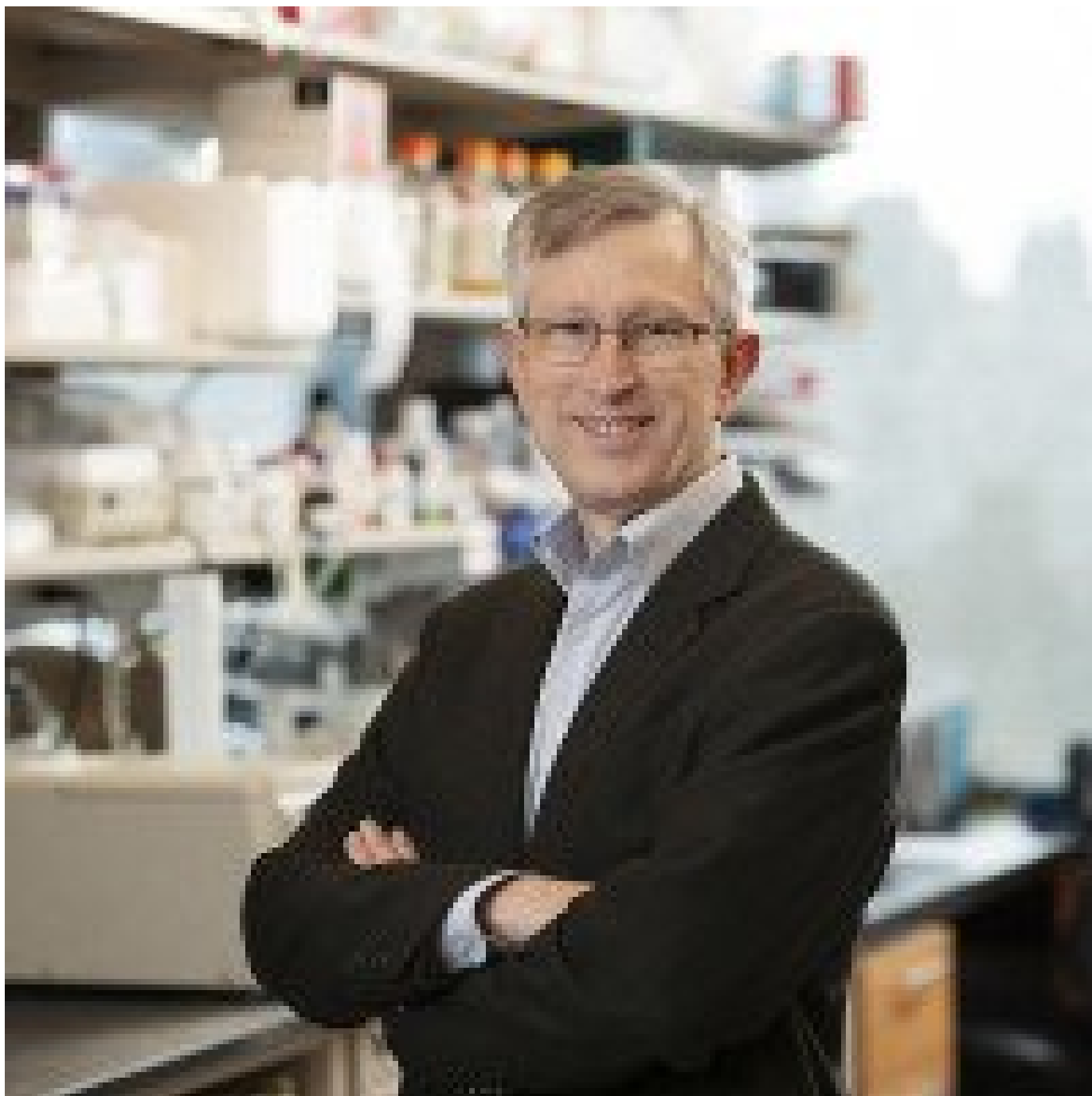
CANCER BIOLOGY & GENETICS PROGRAM

The Joan Massagué Lab

[Open Positions](#)

[Cancer Biology & Genetics Program](#)

Research



Joan Massagué, PhD

Chief Scientific Officer, Memorial Sloan Kettering Cancer Center; Director, Sloan Kettering Institute; Marie-Josée and Henry R. Kravis Chair; Member, Cancer Biology & Genetics Program

We are interested in metastasis, the cause of 90% of cancer deaths. The lab investigates metastatic stem cells and their stromal niches. The role of immune regulatory and regenerative signals, particularly TGF- β , is of interest. General as well as organ-specific mediators of metastasis are under investigation. We are defining the phenotypic plasticity and evolution of metastatic cell populations from dormancy to outbreak, identifying drug targets, and enabling clinical trials to treat metastasis.

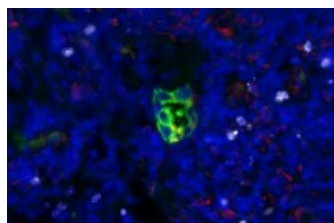
[View Lab Overview](#) →

VIDEO | 02:08

Go inside the lab of Joan Massagué, Chief Scientific Officer and Director, Sloan Kettering Institute.

[Video Details](#) →

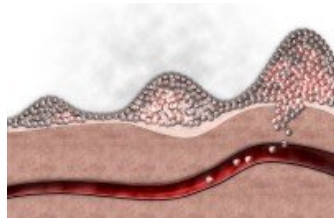
Featured News



[MSK Scientists Identify Potential New Strategy Against Metastasis](#)

A team of scientists at the Sloan Kettering Institute has identified the STING cellular signaling pathway as a key player in keeping dormant cancer cells from progressing into aggressive tumors months, or even years, after they've escaped from a primary tumor.

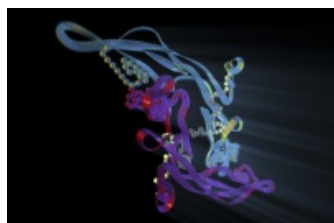
IN THE LAB



[What Does Cancer Metastasis Have to Do with Wound Healing? More than You Might Think](#)

Scientists are learning that — in a literal sense — metastasis is wound healing gone wrong.

FEATURE



[An Old Protein Gets a New Look: Researchers Target TGF- \$\beta\$ to Make Immunotherapy More Effective](#)

Drugs that block the action of TGF- β may make checkpoint inhibitors more effective.

[View All Featured News](#)

Publications Highlights

[Gan, S, Macalinao, DG, Shahoei, SH, Tian, L, Jin, X, Basnet, H, Muller, J, Seffar, E, Chatila, W, Hadjantonakis, AK, Schultz, N., Brogi, E, Bale, TA, Pe'er, D, and Massagué, J. Distinct tumor architectures for metastatic colonization of the brain. bioRxiv \(2023\) PMC10081170](#)

[Hu, J., Sánchez-Rivera, F.J., Johnson, G., Wang, Z., Ho, YJ., Ganesh, K., Gan, S., Hampton, J., Zhao, H., Kottapalli, S., De Stanchina, E., Iacobuzio-Donahue, C.A., Pe'er, D., Lowe, S.W., Sun, J., and Massagué, J. STING suppresses the reactivation of dormant metastasis in lung adenocarcinoma. Nature 616\(7958\):806-813 \(2023\) PMC10569211](#)

[View All Publications](#)

People



Joan Massagué, PhD


Chief Scientific Officer, Memorial Sloan Kettering Cancer Center; Director, Sloan Kettering Institute; Marie-Josée and Henry R. Kravis Chair; Member, Cancer Biology & Genetics Program

Joan Massagué studies the control of stem cell growth and phenotype in tumor progression, metastasis, and response to therapy.

PhD, University of Barcelona

 massagué@mskcc.org

Email Address

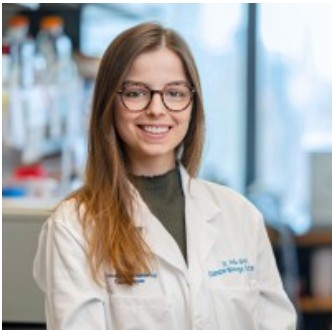
 [646-388-2044](tel:646-388-2044)

Office Phone

Members



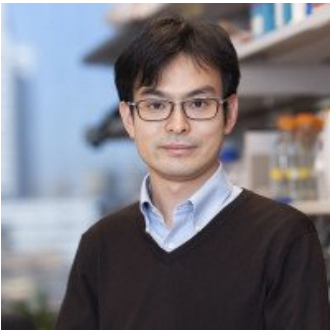
Derniele David
SKI, Senior Admin



Ines Godet
Research Scholar



Alhaji
Janneh



Kenta
Kawasaki

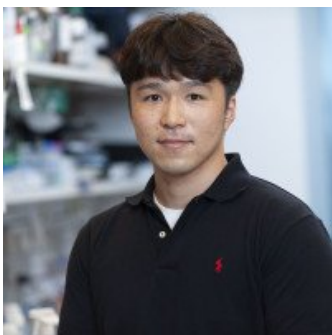
Assistant

Research Scholar

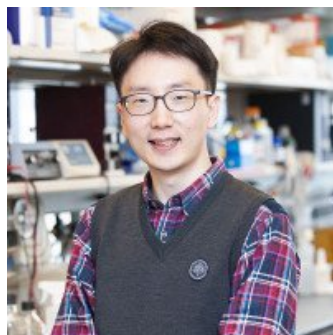
Research Fellow



Carson Kenum
Research Technician



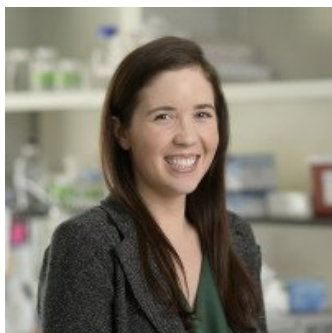
Jun Ho
Lee
Research Associate



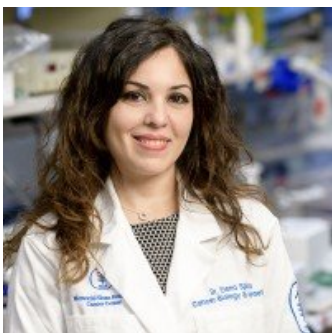
Jin Suk
Park
Research Associate



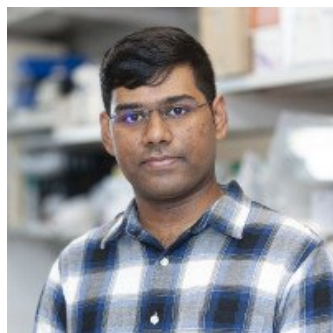
Constantina (Dina)
Rodriguez
Sr. Executive Assistant



Sarah
Singer
Research Assistant



Elena Spina
Research Associate



Dig Vijay Yarlagadda
Tri-I PhD, CBM, Graduate
Student

Lab Alumni
+

Lab Affiliations
+

Achievements

Chief Scientific Officer, MSKCC (2023–)

Director, Sloan Kettering Institute (2014–)

HHMI Scientific Review Board (2014–)

HHMI Investigator (1990-2013)

Fellow, American Association for Cancer Research (AACR) Academy (2016)

Read more
+

Lab News & Events

ACCOLADES

Team Recognitions

The Massague Lab held a Baby shower in Honor of Alhaji Janneh and his family. We are so excited in the arrival of your little one !

Farewell Hamed : Hamed Shahoei departed the Massague Lab in November

Congratulations Dr. Massague : A Symposium was held to celebrate Dr. Massague's 70th Birthday in September!

Welcome to the Massague Lab: Alhaji Janneh who arrived in September from Medical University of South Carolina

Congratulations: Jing Hu departed in July to an faculty position at Peking University

Congratulations : Congratulations to Gabi Johnson who accepted a position with Pfizer as a Scientist in May .

Welcome to the Massague Lab: Ines Godet joined in January from Johns Hopkins University, Maryland

Welcome to the Massague Lab: Carson Kenum arrived in September from the University of Michigan- Ann Arbor

Welcome to the Massague Lab: Catherine Bibby July arrived from Binghamton University

Welcome to the Massague Lab: Kenta Kawasaki arrived in October from Keio University School of Medicine.

Welcome to the Massague Lab : Elena Spina arrived in August from University of Calabria.

Welcome to the Massague Lab: Dylan Manuele arrived in June from the University of Rochester.

Congratulations: Our first in person lab meeting for 2021!

The Massague Lab celebrates the arrival of

Zhenghan Wang's daughter Everly!

Farewell: Weiping Shu has retired from the Massague lab after many years of fantastic service as a senior research technician.

Thank you Weiping for all your contributions!

Congratulations: Harihar Basnet who departed in February as Assistant professor in the Department of Basic Medical Sciences at Tsinghua University

Welcome: Sayyed Hamed Shahoei who joined in November from University of Illinois at Urbana-Champaign

Congratulations : Lin Tian who departed in November as research investigator at the division of Biomarker Discovery, Shanghai China

Welcome to the Massague Lab: Lila Peters arrived in July from the University of Michigan

Congratulations: George Lampe departed in July to Graduate School at Columbia University.

Welcome to the Massague Lab: Jun Ho Lee joined in May from UNIST, Ulsan, Republic of Korea

Welcome to the Massague Lab: Jin Suk Park joined in March from University of Texas Southwestern Medical Center, Dallas





Congratulations Dr. Massague : A Symposium was held to celebrate Dr. Massague's 70th Birthday in September!



Congratulations: Jing Hu departed in July to an faculty position at Peking University



Congratulations to Dr. Yasemin Kaygusuz : Yasemin defended her thesis on 12/2 , Congratulations Yasemin !



2022 Massague Holiday Party



Congratulations : The Massague Lab celebrates the arrival of Jun Ho Lee's daughter Noa!!



Dr. Massague invited the postdocs to his home for an annual gathering.



The Massague Lab celebrates the arrival of Zhenghan Wang's daughter Everly!



In October 2021, A small birthday celebration was held for Gabi.



The Massague Lab had the pleasure to attend a summer happy hour cruise! It was a wonderful time!



Happy Birthday Joan !



The Massague Lab attending their Friday Lab Meetings!



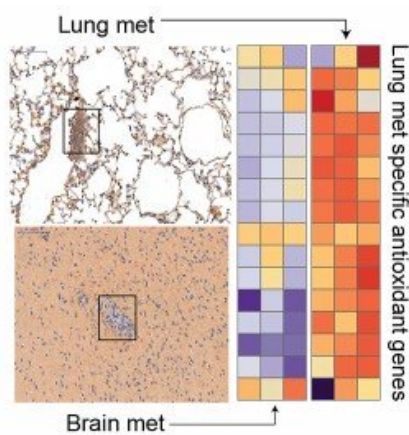
Happy Birthday Joan: Post Doc Jin Suk Park playing the clarinet for Joan's Birthday!



In June 2019, we bid a farewell to one of our Research Techs, Jessica Hampton. Jessica will be leaving to attend Med school at Stanford University. The Massague Lab wishes her well in all of her future endeavors



Farewell: Weiping Shu has retired from the Massague lab after many years of fantastic service as a senior research technician. Thank you Weiping for all your contributions!



March 2019 - Paper Published. During metastasis, cancer cells spread to distant organs where they divide to form microscopic clusters, or micrometastases, that can grow into new tumors. Identification of genes activated in micrometastases can reveal therapeutic targets that can kill cancer cells before they grow into larger tumors that are harder to treat.



The Massague Lab came together to wish Dr. Massague a Happy Birthday!



The Massague Lab came together to celebrate Dr. Massague's Birthday



The Massague Lab at Holiday Party

[View All Lab News & Events](#)

Open Positions

To learn more about available postdoctoral opportunities, please visit our [Career Center](#)

To learn more about compensation and benefits for postdoctoral researchers at MSK, please visit [Resources for Postdocs](#)

Post Doctoral Position

[Apply now](#) →

Get in Touch

✉ massagu@mskcc.org

Lab Head Email

 [646-888-2044](tel:646-888-2044)

Office Phone

 [646-888-2521](tel:646-888-2521)

Lab Phone

Disclosures

Doctors and faculty members often work with pharmaceutical, device, biotechnology, and life sciences companies, and other organizations outside of MSK, to find safe and effective cancer treatments, to improve patient care, and to educate the health care community.

MSK requires doctors and faculty members to report (“disclose”) the relationships and financial interests they have with external entities. As a commitment to transparency with our community, we make that information available to the public.

Joan Massagué discloses the following relationships and financial interests:

Institute Research Biomedicine, Barcelona, Spain

Professional Services and Activities

Scholar Rock

Equity

The information published here is for a specific annual disclosure period. There may be differences between information on this and other public sites as a result of different reporting periods and/or the various ways relationships and financial interests are categorized by organizations that publish such data.

This page and data include information for a specific MSK annual disclosure period (January 1, 2022 through disclosure submission in spring 2023). This data reflects interests that may or may not still exist. This data is updated annually.

Learn more about MSK’s COI policies [here](#). For questions regarding MSK’s COI-related policies and procedures, email MSK’s Compliance Office at ecoi@mskcc.org.

[View all disclosures](#) →

▾ About Us

[Overview](#)

[Leadership](#)

[Administration](#)

[History](#)

[Contact Us](#)



▼ Research

[Overview](#)

[Research programs](#)

[Research labs](#)

[Core facilities & resources](#)

▼ Education & Training

[Overview](#)

[Postdoctoral training](#)

[Gerstner Sloan Kettering Graduate School](#)

[Joint graduate programs](#)

[Programs for college & high school students](#)

▼ News & Events

[Overview](#)

[Seminars & events](#)

▼ Open Positions

[Overview](#)

[Faculty positions](#)

[Postdoctoral positions](#)

[Communication preferences](#)

[Cookie preferences](#)

[Legal disclaimer](#)

[Accessibility Statement](#)

[Privacy policy](#)

[Public notices](#)

© 2024 Memorial Sloan Kettering Cancer Center