



Gerstner Sloan Kettering
Graduate School of Biomedical Sciences

[Welcome to GSK](#)

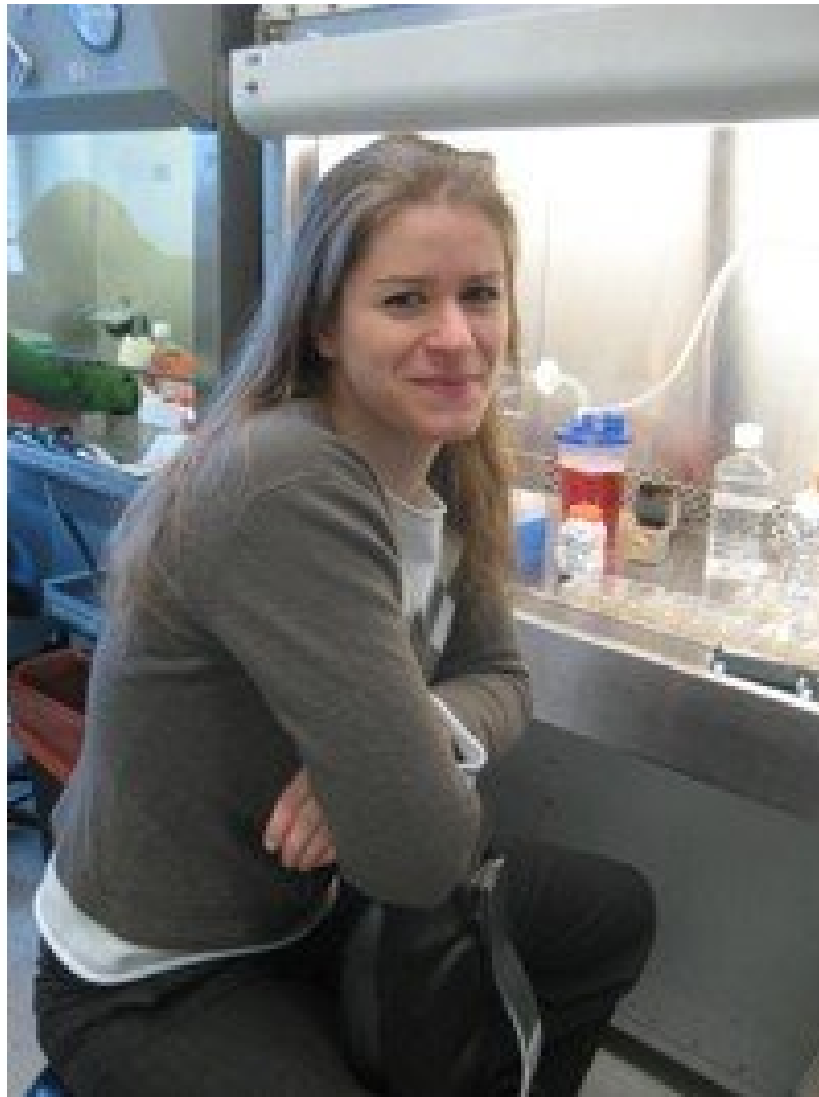
[The Lorenz Studer Lab
Admissions](#)

[Cancer Biology](#) **Sonja Kriks, PhD**

[Cancer Engineering](#)
Postdoctoral Fellow - currently Senior Scientist at Neurona Therapeutics Inc

[Research](#)

[Alumni](#)



Email

sonja@neuronatx.com

