

Ready to start planning your care? Call us at [800-525-2225](tel:800-525-2225) to make an appointment.

×



Memorial Sloan Kettering
Cancer Center

[About Us](#)
[Sloan Kettering Institute](#)

IMMUNOLOGY PROGRAM

[Research](#)

The Morgan Huse Lab

[Education & Training](#)

[Immunology Program](#)
[News & Events](#)

Research

[Open Positions](#)



Morgan Huse, PhD
Member

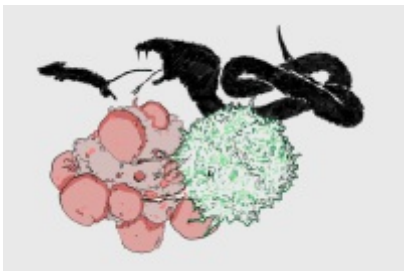
In the Huse lab, we combine imaging technology with synthetic chemistry and materials science to understand how immune cells communicate.

[View Lab Overview](#) →



Featured News

FEATURE



[How Do Immune Cells Kill Their Prey?](#)

When an immune cell faces a foe, it has more than chemical weapons at its disposal.



[At Work: Immunologist Morgan Huse](#)

Immunologist Morgan Huse wants to combine synthetic chemistry and protein engineering with

imaging to learn about immune cell signaling.

EVENT



[2017 MSK Convocation and Commencement Ceremony Celebrates Distinguished Scientists and Young Scholars](#)

Degrees were presented and awards were given at the 38th annual ceremony held on May 18.

[View All Featured News](#)

Publications Highlights

[Tello-Lafoz, M., Srpan, K., Sanchez, E. E., Hu, J., Remsik, J., Romin, Y., Calò, A., Hoen, D., Bhanot, U., Morris, L., Boire, A., Hsu, K. C., Massagué, J., Huse, M.*, and Er, E. E.* \(2021\) Cytotoxic Lymphocytes Target Characteristic Biophysical Vulnerabilities in Cancer. *Immunity* 54, 1037-1054. * corresponding authors](#)

[Tamzalit, F., Wang, M. S., Jin, W., Tello-Lafoz, M., Boyko, V., Heddleston, J. M., Black, C. T., Kam, L. C., and Huse, M. \(2019\). Interfacial Actin Protrusions Mechanically Enhance Killing by Cytotoxic T Cells. *Sci. Immunol.*, eaav5445.](#)

[Basu, R., Whitlock, B. M., Husson, J., Le Floc'h, A., Jin, W., Oyler-Yaniv, A., Dotiwala, F., Giannone, G., Hivroz, C., Biais, N., Lieberman, J., Kam, L. C., and Huse, M. \(2016\). Cytotoxic T Cells Use Mechanical Force to Potentiate Target Cell Killing. *Cell* 165, 100-110.](#)

[View All Publications](#)

People



Morgan Huse, PhD

Member

Immunologist Morgan Huse studies the structure and function of immune cell-cell interactions.

PhD, The Rockefeller University

✉ husem@mskcc.org

Email Address

☎ [646-888-2379](tel:646-888-2379)

Office Phone

Members

Miguel Francisco de
Jesus

Graduate Student

Yassmin
Elbanna

Graduate Student

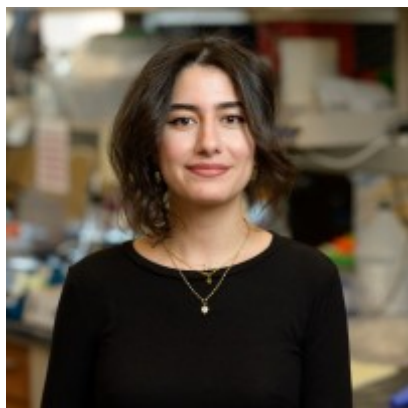


Morgan Huse

Member



Natalie
Lovinger
Research Technician



Farah Mustapha
Research Scholar



Alexandra Ramadhin
Administrative Assistant II



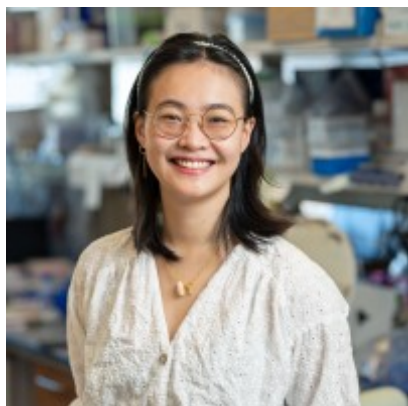
Alexander Settle
Graduate Student



Diana
Tran
Graduate Student



Benjamin Winer
Research Scholar



Yung Yu
Wong
Graduate Student



Alexandrina
Yakimov
Research Technician

Lab Alumni

+

Lab Affiliations

+

Achievements

Searle Scholar Award (2008)

Get in Touch

 husem@mskcc.org

Lab Head Email

 [646-888-2379](tel:646-888-2379)

Office Phone

 [646-888-2362](tel:646-888-2362)

Lab Phone

Disclosures

Doctors and faculty members often work with pharmaceutical, device, biotechnology, and life sciences companies, and other organizations outside of MSK, to find safe and effective cancer treatments, to improve patient care, and to educate the health care community.

MSK requires doctors and faculty members to report (“disclose”) the relationships and financial interests they have with external entities. As a commitment to transparency with our community, we make that information available to the public.

Morgan Huse discloses the following relationships and financial interests:

No disclosures meeting criteria for time period

The information published here is for a specific annual disclosure period. There may be differences

between information on this and other public sites as a result of different reporting periods and/or the various ways relationships and financial interests are categorized by organizations that publish such data.

This page and data include information for a specific MSK annual disclosure period (January 1, 2022 through disclosure submission in spring 2023). This data reflects interests that may or may not still exist. This data is updated annually.

Learn more about MSK's COI policies [here](#). For questions regarding MSK's COI-related policies and procedures, email MSK's Compliance Office at ecoi@mskcc.org.

[View all disclosures](#) →

[Communication preferences](#)

[Cookie preferences](#)

[Legal disclaimer](#)

[Accessibility Statement](#)

[Privacy policy](#)

[Public notices](#)

© 2024 Memorial Sloan Kettering Cancer Center