

Ready to start planning your care? Call us at [800-525-2225](tel:800-525-2225) to make an appointment.

×



Memorial Sloan Kettering  
Cancer Center

[About Us](#)  
[Sloan Kettering Institute](#)

MOLECULAR BIOLOGY PROGRAM

[Research](#)

## The Prasad Jallepalli Lab

[Education & Training](#)

[Molecular Biology Program](#)  
[News & Events](#)

**Research**  
[Open Positions](#)



Prasad Jallepalli, MD, PhD  
Member

---

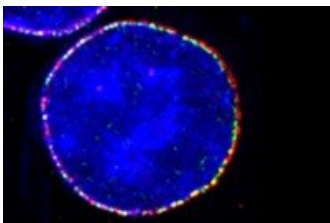
Our laboratory is interested in how human cells accurately duplicate and transmit their chromosomes during each round of division.

[View Lab Overview](#) →



## Featured News

SNAPSHOT



### [Not So Fast: Dividing Cells Use a “Speed Limit” to Avoid Genetic Mistakes](#)

The discovery of a molecular process that slows down cell division could provide new understanding about how some cancers develop.

## Publications Highlights

J. Maciejowski, H. Dreschler, K. Grundner-Culemann, E.R. Ballister, J.-A. Rodriguez-Rodriguez, V. Rodriguez-Bravo, M.J.K. Jones, E. Foley, M.A. Lampson, H. Daub, A.D. McAinsh, and P.V. Jallepalli. Mps1 regulates kinetochore-microtubule attachment stability via the Ska complex to ensure error-free chromosome segregation. *Dev. Cell* 41, 153-156

(2017).

---

V. Rodriguez-Bravo, J. Maciejowski, J. Corona, H.K. Buch, M.T. Kanemaki, J.V. Shah, and P.V. Jallepalli. Nuclear pores protect genome integrity by assembling a premitotic and Mad1-dependent anaphase inhibitor. *Cell* 156, 1017-1031 (2014).

[View All Publications](#)

## People




## Prasad Jallepalli, MD, PhD


Member

Molecular biologist Prasad Jallepalli studies the mechanisms that ensure accurate chromosome transmission in human cells.

MD, PhD, Johns Hopkins University School of Medicine

 [jallepap@mskcc.org](mailto:jallepap@mskcc.org)

Email Address

 [212-639-3252](tel:212-639-3252)

Office Phone

### Members

Research Technician

Lab Alumni  
+

Lab Affiliations  
+

### Achievements

The Prasad Jallepalli Lab

Phi Beta Kappa, Harvard University (1992)

M.D./Ph.D. Fellow, Medical Scientist Training Program, Johns Hopkins University (1992-1999)

Postdoctoral Fellow, Damon Runyon Cancer Foundation (1999-2002)

Scholar, V Foundation for Cancer Research (2003)

Frederick R. Adler Chair for Junior Faculty (2003-2007)

Read more

+

## Open Positions

To learn more about available postdoctoral opportunities, please visit our [Career Center](#)

To learn more about compensation and benefits for postdoctoral researchers at MSK, please visit [Resources for Postdocs](#)

---

## Career Opportunity

[Apply now](#) →

## Get in Touch

✉ [jallepap@mskcc.org](mailto:jallepap@mskcc.org)

Lab Head Email

☎ [212-639-3252](tel:212-639-3252)

Office Phone

☎ [212-639-3250](tel:212-639-3250)

Lab Phone

☎ [212-717-3627](tel:212-717-3627)

Lab Fax

## Disclosures

Doctors and faculty members often work with pharmaceutical, device, biotechnology, and life sciences companies, and other organizations outside of MSK, to find safe and effective cancer treatments, to improve patient care, and to educate the health care community.

MSK requires doctors and faculty members to report (“disclose”) the relationships and financial interests they have with external entities. As a commitment to transparency with our community, we make that information available to the public.

Prasad Jallepalli discloses the following relationships and financial interests:

*No disclosures meeting criteria for time period*

The information published here is for a specific annual disclosure period. There may be differences between information on this and other public sites as a result of different reporting periods and/or the various ways relationships and financial interests are categorized by organizations that publish such data.

---

This page and data include information for a specific MSK annual disclosure period (January 1, 2022 through disclosure submission in spring 2023). This data reflects interests that may or may not still exist. This data is updated annually.

Learn more about MSK's COI policies [here](#). For questions regarding MSK's COI-related policies and procedures, email MSK's Compliance Office at [ecoi@mskcc.org](mailto:ecoi@mskcc.org).

[View all disclosures](#) →

## ▼ About Us

[Overview](#)

[Leadership](#)

[Administration](#)

[History](#)

[Contact Us](#)



## ▼ Research

[Overview](#)

[Research programs](#)

[Research labs](#)

[Core facilities & resources](#)

## ▼ Education & Training

[Overview](#)

[Postdoctoral training](#)

[Gerstner Sloan Kettering Graduate School](#)

[Joint graduate programs](#)

[Programs for college & high school students](#)

## ▼ News & Events

[Overview](#)

[Seminars & events](#)

## ▼ Open Positions

[Overview](#)

[Faculty positions](#)

[Postdoctoral positions](#)

---

[Communication preferences](#)

[Cookie preferences](#)

[Legal disclaimer](#)

[Accessibility Statement](#)

[Privacy policy](#)

[Public notices](#)

© 2024 Memorial Sloan Kettering Cancer Center