

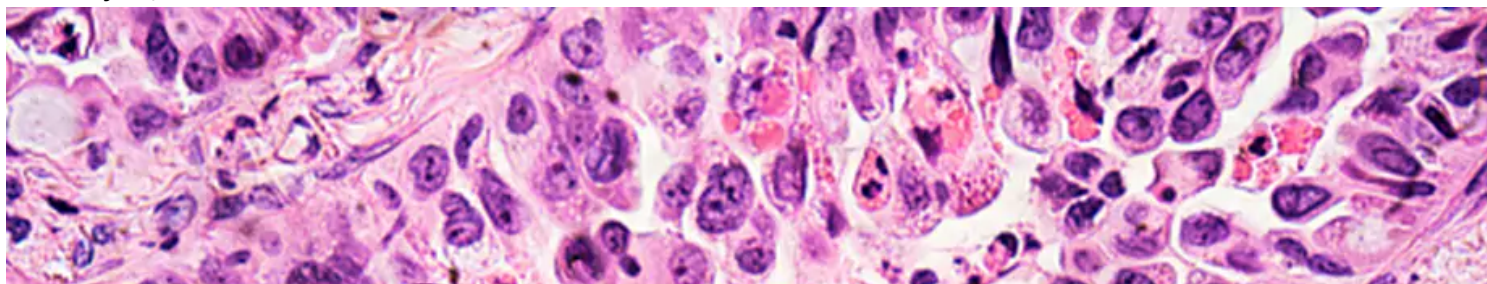
MEDPAGE TODAY®

Cancer & COVID Vax Priority; AML/MDS Halt Sickle Cell Trial; How a Dog's Nose Knows

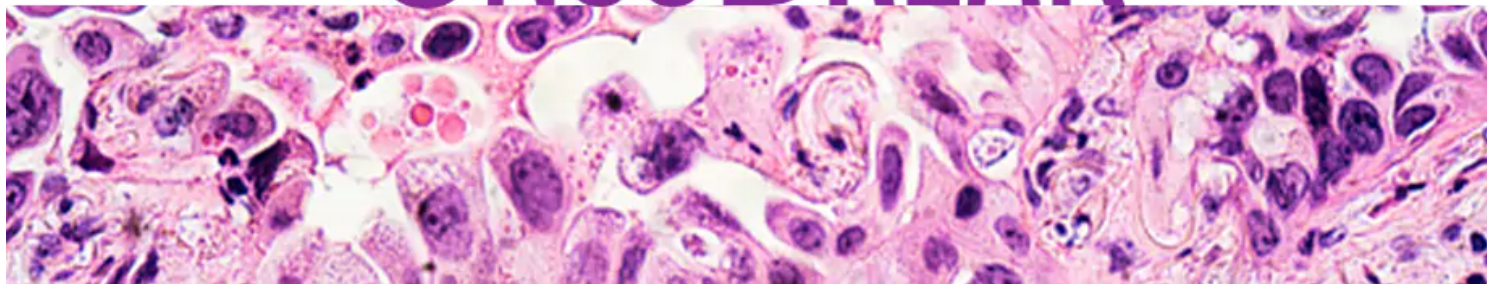
— News, features, and commentary about cancer-related issues

by [Ian Ingram](#), Deputy Managing Editor, MedPage Today

February 18, 2021



ONCOBREAK



The American Association for Cancer Research as well as other leading organizations and cancer centers -- 130 in all -- are urging the Biden administration and public health departments to [prioritize cancer patients](#) for access to COVID-19 vaccines due to their risk of severe illness.

More and more research on COVID-19 and cancer points to [hematologic malignancies](#) presenting the greatest risk. (*The Scientist*)

Bluebird Bio [temporarily halted](#) clinical trials of its investigational gene therapy for sickle cell disease after two participants were diagnosed with acute myeloid leukemia and myelodysplastic syndrome.

The phase III OlympiA trial met its primary endpoint, with adjuvant olaparib (Lynparza) improving invasive disease-free survival in early breast cancer patients with high-risk, *BRCA*-mutated/*HER2*-negative disease, [AstraZeneca announced](#).

Bob Dole, the 1996 Republican presidential nominee and former longtime Kansas senator, announced that he was [diagnosed with advanced lung cancer](#) and will start treatment next week. (*NBC News*)

Conservative radio host [Rush Limbaugh](#), who had been battling lung cancer, died at age 70. (*NPR*)

Using artificial intelligence plus chemical and microbial analysis of urine samples, researchers have moved "one paw closer" to figuring out exactly [how cancer-sniffing dogs can detect prostate tumors](#). (*Prostate Cancer Foundation, PLOS ONE*)

Inherited cancer genes are [surprisingly common in pediatric cancer patients](#), suggesting germline testing should be broadened to all children newly diagnosed with cancer. (*Memorial Sloan Kettering Cancer Center, Nature Cancer*)

The Community Oncology Alliance [hit another roadblock](#) in its ongoing legal challenge related to Medicare reimbursement cuts for delivering chemotherapy and other intravenous treatments.

A [new risk model](#) can identify prostate cancer patients most likely to benefit from highly sensitive prostate-specific membrane antigen (PSMA) PET imaging. (*UCLA Jonsson Comprehensive Cancer Center, European Urology Oncology*)

Tumor mutational burden's [ability to predict response to immunotherapy](#) in microsatellite-stable tumors varies widely across tumor types. (*JAMA Oncology*)

In the international phase III EMPOWER-Lung 1 trial, first-line therapy with cemiplimab (Libtayo) alone [improved overall survival](#) versus chemotherapy for advanced non-small cell lung cancer patients with high PD-L1 expression. (*The Lancet*)

Direct-to-consumer single nucleotide polymorphism testing [has poor accuracy](#) for identifying rare mutations, such as *BRCA1* or *BRCA2*, that increase cancer risk. (*The BMJ*)



[Ian Ingram](#) joined MedPage Today in 2018 as Deputy Managing Editor, and covers oncology for the site.