

# Welcome to Tri-I RCR Spring 2020

Debra Schaller-Demers, MSOM  
Maika Mitchell, PhD

## Responsible Conduct of Research

Memorial Sloan Kettering Cancer Center

The Rockefeller University • Weill Cornell Medicine



Together we build and  
support a  
**Culture of Responsibility  
and Integrity**

Co-sponsored by **Memorial Sloan Kettering Cancer Center's Research and Technology Management Division** and the **Office of Postdoctoral Affairs, The Rockefeller University**, and **Weill Cornell Medicine**

Course Director: **Maika Mitchell, PhD**

Course Coordinator: **Patrice Best-Second**

- First year Gerstner Sloan Kettering, The Rockefeller University and Weill Cornell Graduate School Students
- MSK and WCM first year Postdocs (regardless of rank)
- **Anyone assigned to an NIH Training Grant or Career Award (T, K, F, R25)**
  - For most awards: Every 4 years; 8 hours of classroom learning
- Anyone funded by NSF

Basic, Clinical, Translational – we have them all!





**“Someone who has witnessed misconduct has an unmistakable obligation to act.”**



Committee on Science, Engineering, and Public Policy,  
National Academy of Sciences,  
National Academy of Engineering, and Institute of Medicine.  
(2009).

***On Being a Scientist, Third Edition. The National Academies Press, Washington, DC***

Available for free online at:

[http://www.nap.edu/openbook.php?record\\_id=12192](http://www.nap.edu/openbook.php?record_id=12192)

<https://www.youtube.com/watch?v=wIBjGV3OB0o>

# A K S

## What do we want to accomplish?

### Awareness:

heighten awareness of participants to ethical considerations relevant to the conduct of research

### Knowledge:

inform participants of federal, state, and institutional policies, regulations, and procedures

### Skills:

provide participants with critical analysis and problem solving skills for ethical decision-making

# Orientation

## What is RCR – what do I need to learn?

1. Research Misconduct (including Whistleblowing and Dispute Resolution)
2. Data Acquisition, Management, Sharing, and Ownership (Enhancing Reproducibility) and Safe Laboratory Practices
3. Animal Welfare
4. Use of Human Subjects
5. Conflicts of Interest and Commitment
6. Authorship and Responsible Publication Practices
7. Peer Review
8. Collaboration and Mentoring
9. The Scientist and Social Responsibility – DURC/Export Control



# How to begin

Pre-survey: Web Curriculum and Exams – best browsers  
(view on default resolution): **Firefox, Safari, Chrome, and IE**  
[https://www.surveymonkey.com/r/RCR\\_Spring2020\\_Pre](https://www.surveymonkey.com/r/RCR_Spring2020_Pre)

Will work on iPad and smartphones!

Links to 3-part web course can be found on the external RCR web page:  
[www.mskcc.org/rcr](http://www.mskcc.org/rcr)

Faculty-led Small Group Case Study Discussion Sessions: 4-6 PM

- Monday, February 10
- Monday, March 9
- Monday, April 27 - End of course reception 6-7 PM

***Makeup sessions – in dire circumstances only***

***All exams and makeup assignments must be completed by **April 30<sup>th</sup>*****

***Participants email exam certificates to [bestsecp@mskcc.org](mailto:bestsecp@mskcc.org)***

***Once all exams, assignments, and hours are complete you will receive a Course Completion Certificate.***





## R,R,R,&T

### Reproducibility, Replication, Rigor, and Transparency – **REQUIRED as of 2017**

**Alexia Iasonos, PhD**, Associate Attending, Epidemiology & Biostatistics, MSK

Developed due to concerns of a crisis in science whereby many prominent published findings cannot be independently replicated.

#### **Date TBA – ZRC Auditorium**

- Introduction of Key Terms
- Evidence of a problem in reporting scientific findings
- Features of study design/conduct/reporting that contribute to absence of replicability
- Concepts of a study protocol for hypothesis-driven research
- Relevant features of the current policy landscape
- Perverse incentives that impede the goal of replicability/reproducibility/transparency

# Obligations

How should researchers and the staff who support them act?  
The choices faced are not always obvious or clear.  
Even when it seems to be clear, it may be a matter of "right vs. right"  
rather than "right vs. wrong."

The obligation is not necessarily to make the right decisions,  
*but to strive to make the best possible decisions.*

## Research:

*How should research be conducted to meet our obligations to preserve and promote the integrity of research findings?*

## Researchers and Staff:

*How should researchers and staff interact with one another to meet our obligations to others in their research community?*

## Society:

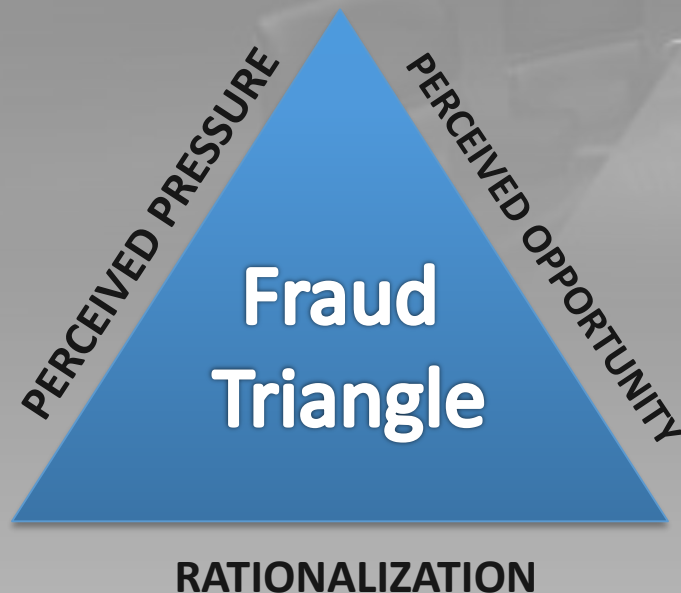
*How should researchers and staff interact with the larger communities, academic and public, to meet our obligations to the society in which we live and work?*

## Asking Questions:

*How, when, and where should researchers and staff be prepared to ask questions about the conduct of science so as to meet their obligations to the research, researchers, and society?*



# Fraud Triangle



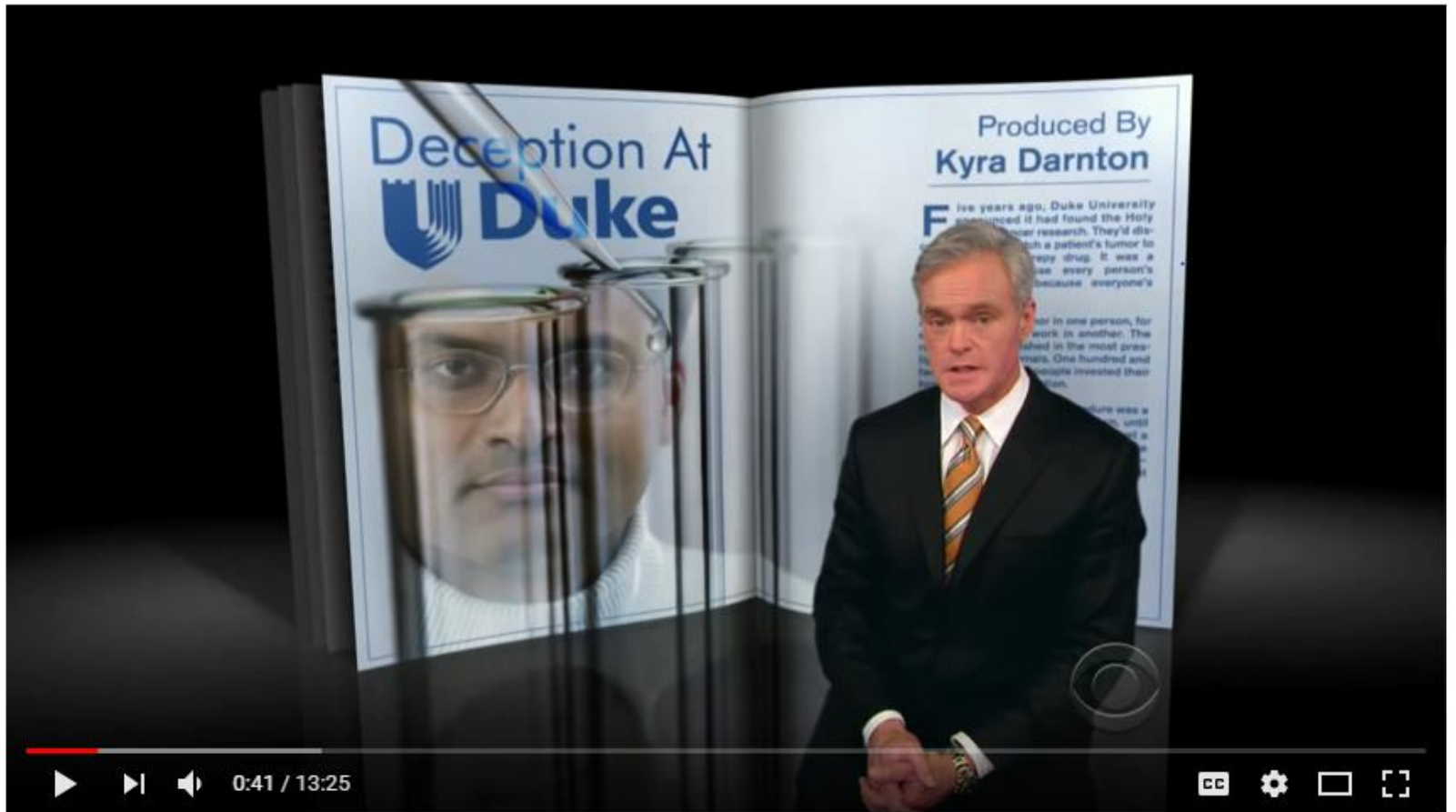
Fraud Triangle Theory developed by  
American criminologist Donald Cressey  
<http://www.brumellgroup.com/news/the-fraud-triangle-theory/>

**Pressure.** Can include money problems, gambling debts, alcohol or drug addiction, overwhelming medical bills. Greed can also become a pressure, but it usually needs to be associated with injustice.

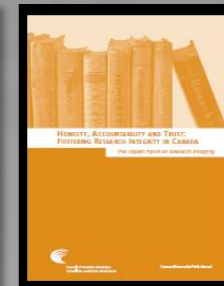
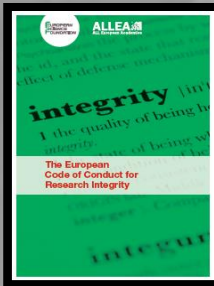
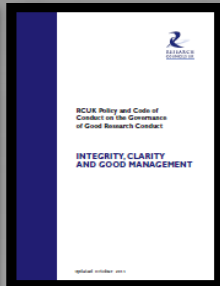
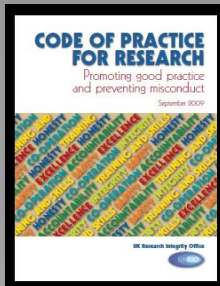
**Opportunity.** In the case of fraud, usually a temporary situation arises where there is a chance to commit the act without a high chance of being caught.

**Rationalization.** The individual manages to justify what he or she is about to do.

# Anil Potti



# RCR is Global



Many  
were  
published  
since  
2007

**World Congress on Research Integrity: Six since 2008 (every 2 years)**

**7<sup>th</sup> WCRI: May 29-June 2, 2021 Cape Town**

**Principles from the 2010 Singapore Statement:**

- **Honesty** in all aspects of research
- **Accountability** in the conduct of research
- **Professional courtesy** and fairness in working with others
- **Good stewardship** of research on behalf of others

# Decisions

## Why do I make certain choices...



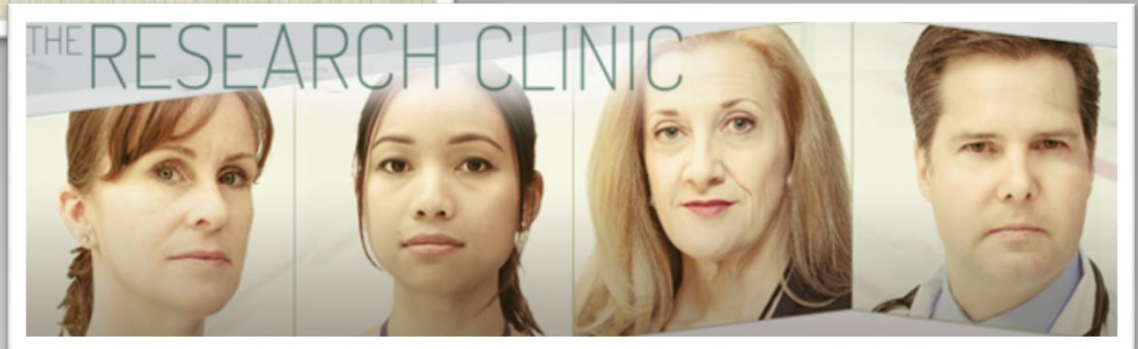


# ORI



## Office of Research Integrity (ORI)

<http://ori.hhs.gov/TheResearchClinic>



# Contact Us

## Questions? More Information?



**Debra Schaller-Demers**  
[schalled@mskcc.org](mailto:schalled@mskcc.org)

**Maika Mitchell**  
[mitchem2@mskcc.org](mailto:mitchem2@mskcc.org)

**Patrice Best-Second**  
[bestsecp@mskcc.org](mailto:bestsecp@mskcc.org)

