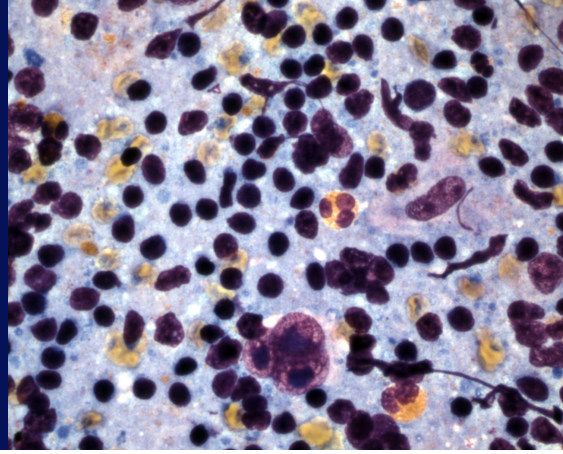




Memorial Sloan Kettering
Cancer Center

Cytology Fellowship



This is a one-year Accreditation Council for Graduate Medical Education (ACGME)-accredited fellowship program in diagnostic cytopathology offered by the Cytology Service of the Department of Pathology.

The fellowship provides training in all areas of cytology, including performance of FNAs. The material comprises approximately **32,500–38,000** specimens per year, including gynecologic specimens and non-gynecologic samples, of which approximately **5,500–6,700** are imaging-guided FNAs and **600–1,300** are pathologist-performed FNAs. Ancillary tests, such as flow cytometry, immunohistochemistry and molecular pathology are available. Close interaction with a subspecialized surgical pathology department enhances the learning experience.

The fellowship has a structured educational curriculum, which includes screening, weekly unknowns, and formal didactics. Fellows are encouraged to participate in research projects with members of the department and/or in cooperation with clinicians.

Number of Positions: 4

Length of Program: 1 year

Admissions Deadline:

Rolling admissions through
August 1st

How to Apply: *Online only*

[https://mskcc.embark.com/login/
apply?target=pathology](https://mskcc.embark.com/login/apply?target=pathology)

Contact:

Angelica Angel and Sheila Vazquez,
*Department of Pathology and
Laboratory Medicine, Memorial
Sloan Kettering Cancer Center*

212-639-7102

pthfellows@mskcc.org

For More Information Visit:

[https://www.mskcc.org/
departments/pathology-
laboratory-medicine/fellowships](https://www.mskcc.org/departments/pathology-laboratory-medicine/fellowships)

Or scan the
QR code →



Goals and Objectives

- To become proficient at interpreting a wide range of complex cytopathology cases in a high volume environment.
- To gain knowledge through didactic seminars as well as hands-on experience.
- To be trained in interventional cytopathology and acquire the knowledge and practice required to perform FNAs of palpable lesions as well as ultrasound guided FNA biopsies.
- To understand the value of integrating the cytopathologist in a multidisciplinary clinical team.
- To acquire practical laboratory experience and become proficient in various techniques and equipment used in the cytology laboratory.
- To actively participate in the cytopathology laboratory management.
- To participate in research under the guidance of faculty.

Clinical Responsibilities

Fellows will review slides and prepare reports for in-house and submitted consultation cases. They will be actively involved in on-site adequacy of image guided fine needle aspiration biopsies of deep seated lesions and endoscopic ultrasound guided FNAs. They will write up cases for sign-out with attending faculty and prepare presentations for intradepartmental conferences. The fellows will learn and practice under faculty supervision the technique of superficial and ultrasound guided fine needle aspiration biopsy. They will be involved in the supervision and teaching of cytotechnology students.

Cytopathology fellows will be expected to engage in both independent and collaborative research. The fellows will prepare

research proposals, compile and analyze the data, and prepare abstracts for submission to national meetings. The fellows will prepare presentations of their data as well as prepare manuscripts for submission to scientific journals

Requirements

Applicants must be board certified or board-eligible in anatomic pathology by the American Board of Pathology or the Royal College of Physicians and Surgeons of Canada.

Darren Buonocore, MD

Program Director

Marina K Baine, MD, PhD

Associate Program Director