



Memorial Sloan Kettering  
Cancer Center

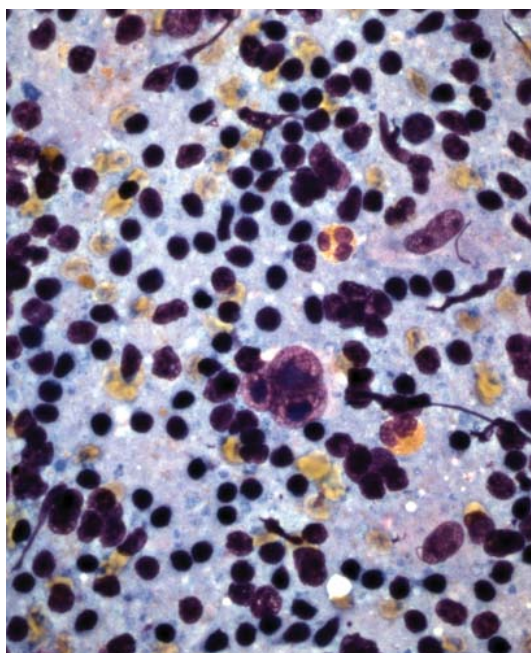
# Cytopathology Fellowship

Memorial Sloan Kettering Cancer Center

The Department of Pathology at Memorial Sloan Kettering offers a 1-year ACGME accredited cytopathology fellowship with 3 positions available annually. All fellows should have completed residency training in anatomic pathology and be certified or eligible for certification by the American Board of Pathology or the Royal College of Physicians and Surgeons of Canada.

The fellowship provides training in all areas of cytopathology including gyn and non-gyn cytology, fine needle aspiration (FNA), and interventional cytopathology. Fellows are fully integrated into a service/team that evaluates approximately 30,000 specimens each year comprising a wealth of interesting and challenging cases. The fellows experience close interaction with the many subspecialized surgical pathologists, are expected to interact with clinical teams in a multidisciplinary environment, and actively participate in the FNA service which includes performing ultrasound guided FNAs. The fellowship has a structured educational curriculum which includes screening, weekly unknowns, and formal didactics. Fellows are strongly encouraged to participate in research projects within the pathology department and /or in collaboration with members of other departments.

For more information visit:  
<https://www.mskcc.org/departments/pathology>



## Number of Positions

*Three*

## Length of Program

*One year (start date July 1st)*

## How to Apply

*Online only (deadline October 1st)*

*<https://www.mskcc.org/departments/pathology/fellowships>*

## Contact

*Nicole Rinaldi  
Fellowship Coordinator  
Department of Pathology  
Memorial Sloan Kettering Cancer Center  
1275 York Ave. New York, NY 10065  
Tel: 212-639-7102; Fax: 212-639-2631  
email: [rinaldin@mskcc.org](mailto:rinaldin@mskcc.org)*

## Goals and Objectives

- To become proficient at interpreting a wide range of complex cytopathology cases in a high volume environment.
- To gain knowledge through didactic seminars as well as hands-on experience.
- To be trained in interventional cytopathology and acquire the knowledge and practice required to perform FNAs of palpable lesions as well as ultrasound guided FNA biopsies.
- To understand the value of integrating the cytopathologist in a multidisciplinary clinical team.
- To acquire practical laboratory experience and become proficient in various techniques and equipment used in the cytology laboratory.
- To actively participate in the cytopathology laboratory management.
- To participate in research under the guidance of faculty.

## Clinical Responsibilities

Fellows will review slides and prepare reports for in-house and submitted consultations cases. They will be actively involved in on-site adequacy of image guided fine needle aspiration biopsies of deep seated lesions and endoscopic ultrasound guided FNAs. They will write up cases for sign-out with attending faculty and prepare presentations for intradepartmental conferences. The fellows will learn and practice under faculty supervision the technique of superficial and ultrasound guided fine needle aspiration biopsy. They will be involved in the supervision and teaching of cytotechnology students.

Cytopathology fellows will be expected to engage in both independent and collaborative research. The fellows will prepare research proposals, compile and analyze the data, and prepare abstracts for submission to national meetings. The fellows will prepared presentations of their data and prepare manuscripts for submission to scientific journals.

## Requirements

Applicants must be board certified or board-eligible in anatomic pathology by the American Board of Pathology or the Royal College of Physicians and Surgeons of Canada.

### Program Director

Jean-Marc Cohen, MD

### Associate Program Director

Natasha Rekhtman, MD, PhD