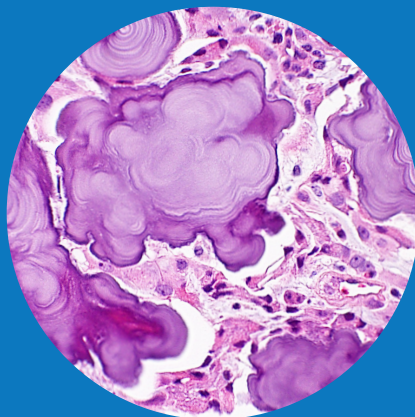




Memorial Sloan Kettering
Cancer Center

Hematopathology Fellowship



The Department of Pathology and Laboratory Medicine at Memorial Sloan Kettering Cancer Center offers a hematopathology fellowship training program fully accredited by the Accreditation Council for Graduate Medical Education (ACGME). All candidates should have completed training in anatomic pathology and/or clinical pathology and should be either board certified or eligible for the American Board of Pathology board examination prior to application.

Fellowship training is done primarily at Memorial Sloan Kettering Cancer Center, including Memorial Hospital for Cancer and Allied Diseases, where patients with a wide range of hematologic neoplasms are seen. Cases at MSK include a wide range of hematologic neoplastic diseases, including acute and chronic leukemias, lymphomas

(both lymph node and organ based), plasma cell neoplasms, and amyloidosis. The fellows are also exposed to a wide variety of non-neoplastic hematologic diseases (including anemias, hemo-globinopathies, hemolysis, and abnormal hemostatic and thrombotic conditions) through the non-neoplastic hematology service at MSKCC. There is extensive training in flow cytometric analysis, as well as additional training with the cytogenetics and molecular pathology services.

There are numerous research opportunities for fellows to become involved in both the clinical and laboratory settings. There is also a possible second year fellowship opportunity, the neoplastic hematopathology fellowship, available to interested fellows. This additional training is specifically designed around a fellow's own career goals.

Number of Positions: 3

Length of Program: 1 Year July 1 start)

How to Apply: Online Only
<https://mskcc.embark.com/login/apply?target=pathology>

For More Information Visit:
<https://www.mskcc.org/departments/pathology-laboratory-medicine/fellowships>

<https://www.mskcc.org/hcp-education-training/graduate-medical-education>

Contact:

Angelica Angel, Sabrina Calabria,
and Sheila Vazquez,
Department of Pathology and
Laboratory Medicine, Memorial
Sloan Kettering Cancer Center

212-639-7102
pthfellows@mskcc.org

Scan the QR code for info



Goals and Objectives

- To provide state-of-the-art diagnostic services that integrate clinical, morphologic, immunophenotypic, cytogenetic, and molecular genetic studies to improve proficiency and develop excellent interpretive skills in the examination and interpretation of lymph node, organ-based, bone marrow, and peripheral blood specimens.
- To provide post-graduate training in the diagnoses of diseases and disorders of the hematopoietic system, as well as an expert understanding in the pathogenesis of disease, clinical consultation, and laboratory administration and management.
- To train and develop academically oriented physicians in all aspects of hematopathology.
- To establish eligibility for the sub-specialty competency examination in hematopathology administered by the American Board of Pathology.
- To provide research opportunities in collaboration with and under the supervision of hematopathology faculty, present research at national and international meetings, and prepare manuscripts for publication in peer-reviewed journals.

Responsibilities

The hematopathology fellows will review slides and prepare reports for all in-house and submitted consultation cases, with increasing autonomy as the fellowship progresses. Aside from previewing and sign-out responsibilities, fellows will also participate in interdepartmental tumor board meetings, intradepartmental teaching conferences, research meetings, and journal club presentations. The fellows will attend consensus conferences, participate in tissue procurement, and review archival pathology cases for research and clinical purposes. Fellows will also supervise visiting rotators and observers. Participation in research is encouraged with the goal of abstract presentation and manuscript submission to peer-reviewed scientific journals.

Curriculum

Lymphoma,
Leukemia, and
Consultation Services - - - - 34 weeks:

Molecular Diagnostics
and Cytogenetics - - - - - 4 weeks

Flow Cytometry - - - - - 6 weeks

Hematology/
Coagulation - - - - - 2 weeks

Elective - - - - - 3 weeks

Vacation- - - - - 3 week

Faculty:

Alexander Chan, MD
Program Director

Pallavi Galera, MBBS
Associate Program Director

Ahmet Dogan, MD, PhD.
Chief, Hematopathology