



Memorial Sloan Kettering  
Cancer Center

# Hematopathology Fellowship

Memorial Sloan Kettering Cancer Center

The Department of Pathology at Memorial Sloan Kettering Cancer Center offers a Hematopathology Fellowship Training Program fully accredited by the Accreditation Council for Graduate Medical Education (ACGME). All candidates should have completed training in anatomic pathology and clinical pathology, and should be certified (or eligible for certification) by the American Board of Pathology prior to application.

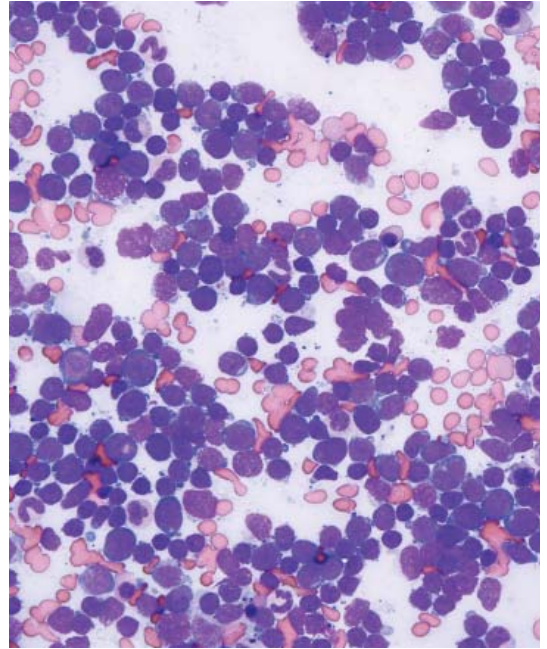
Fellowship training is done primarily at Memorial Sloan Kettering Cancer Center, including Memorial Hospital for Cancer and Allied Diseases, where patients with many hematologic neoplasms and the short or long term consequences of therapies including surgery, chemotherapy, radiation therapy, and transplantation are seen. Cases at MSK include a wide range of hematologic neoplastic diseases, such as lymphomas (both lymph node and organ based), leukemias, myelodysplasia, and plasma cell myelomas/amyloidoses.

The fellows are exposed to a wide variety of non-neoplastic hematologic diseases (including anemias, hemoglobinopathies, hemolytic syndromes, hemostasis and thrombosis and general hematologic conditions) through the non-neoplastic Hematology Service at MSKCC.

There are numerous research opportunities for fellows to become involved in both the clinical and laboratory settings. Possibility of a second year research fellowship exists for those fellows who are interested.

**For more information visit:**

<https://www.mskcc.org/departments/pathology>



## Number of Positions

*Three*

## Length of Program

*One year (start date July 1st)*

## How to Apply

*Online only (apply at least 21 months prior to planned start date)*

*<https://www.mskcc.org/departments/pathology/fellowships>*

## Contact

*Nicole Rinaldi*

*Fellowship Coordinator*

*Department of Pathology*

*Memorial Sloan Kettering Cancer Center*

*1275 York Ave. New York, NY 10065*

*Tel: 212-639-7102; Fax: 212-639-2631*

*email: [rinaldin@mskcc.org](mailto:rinaldin@mskcc.org)*

## Goals and Objectives

- To provide state of the art diagnostic services that integrate clinical, morphologic, immunophenotypic, cytogenetic, and molecular genetic studies to improve proficiency and develop excellent interpretive skills in the examination and interpretation of lymph node and organ-based blood and bone marrow specimens.
- To provide postgraduate training in the diagnoses of diseases and disorders of the hematopoietic system, including lymphoid tissues, blood, and bone marrow, as well as develop an expert understanding in the pathogenesis of disease, clinical consultation, and laboratory administration and management.
- To train and develop academically oriented physicians in all aspects of Hematopathology.
- To establish eligibility for the special competency examination in Hematology administered by the American Board of Pathology.
- To provide research opportunities in collaboration with and under the supervision of hematopathology faculty; to perform investigative and clinical translational research that is presented at national and international meetings; and ultimately to prepare a manuscript acceptable for publication in a peer-reviewed journal.

## Responsibilities

The hematopathology fellows will review slides and prepare reports for all in house and submitted consultation cases, with increasing autonomy as the fellowship progresses. Responsibilities also include supervision of pathologist assistants, rotating visitors, and participation in intradepartmental teaching conferences and journal club presentations. The fellows will attend daily consensus conferences as well as participate in tissue procurement and review of archival pathology cases for both research and clinical purposes. Participation in research is

encouraged with the goal of abstract presentation and manuscript submission to peer-reviewed scientific journals.

### Curriculum

Lymphoma, Leukemia and consultation services	40 weeks:
Molecular Diagnostics	
/Cytogenetics	3 weeks
Flow Cytometry	2 weeks
Hematology/Coagulation	2 weeks
Elective	2 weeks
Vacation	3 weeks

## Program Director

Filiz Sen, MD

## Chief, Hematopathology

Ahmet Dogan, MD, PhD.