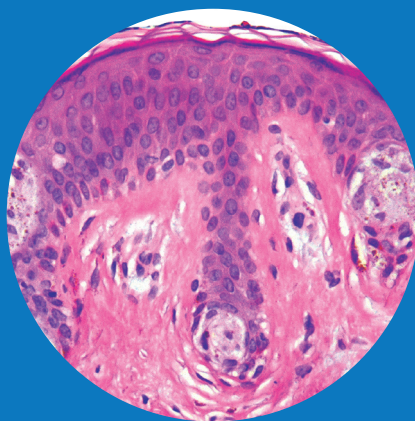




Memorial Sloan Kettering
Cancer Center

Dermatopathology Fellowship



The Department of Pathology and Laboratory Medicine at Memorial Sloan Kettering Cancer Center offers a 1-year ACGME accredited Fellowship in Dermatopathology available annually. It is a program affiliated with the New York Presbyterian Hospital, Weill Medical College of Cornell University. All fellows should have completed residency training in Anatomic Pathology or Dermatology and be certified or eligible for certification by the American Board of Pathology or the Royal College of Physicians and Surgeons of Canada or the American Board of Dermatology.

At MSKCC, fellows will benefit from a wealth of expertise in cutaneous neoplasms and skin disorders related to cancer treatment, with many problematic and complex cases discussed at multi-disciplinary tumor boards for patient management decisions. The New York Presbyterian Hospital offers exposure to a

general dermatology practice with added depth in areas of rheumatologic disorders (Hospital for Special Surgery) and inpatient dermatology.

Pathology-trained fellows rotate in Clinics at MSKCC and The New York Presbyterian Hospital. Dermatology-trained fellows rotate through a number of sub-specialty fields in anatomic pathology relevant to dermatopathology: bone & soft tissue, head & neck, molecular pathology and cytogenetics. There is an opportunity for elective time for fellows to pursue research interests.

Responsibilities

The dermatopathology fellows will review slides and prepare reports for submitted consultation cases as well as in-house biopsies and resections pertaining to the dermatopathology service. This includes thorough examination of histologic sections and gross findings when

Number of Positions: 1-2

(accredited for two)

Length of Program: 1 Year (July 1 start)

How to Apply: Online only

(apply at least 24 months prior to planned start date)

<https://mskcc.embark.com/login/apply?target=pathology>

For More Information Visit:

<https://www.mskcc.org/hcp-education-training/fellowships/dermatopathology-fellowship>

<https://www.mskcc.org/hcp-education-training/graduate-medical-education>

Contact:

Angelica Angel, Sabrina Calabria,
and Sheila Vazquez,
Department of Pathology
and Laboratory Medicine,
Memorial Sloan Kettering Cancer Center

212-639-7102

pthfellows@mskcc.org

Scan QR code for info



Goals and Objectives:

- Gain experience in the diagnosis of neoplastic and non-neoplastic diseases in dermatopathology
- Understand and appropriately employ ancillary studies for the assessment of cutaneous pathology
- Develop and enhance communication skills with clinicians and ancillary medical staff in the care of patients
- Become proficient at handling high-volume, complex, common, rare and challenging dermatopathology cases
- Develop an understanding of the clinical features and outcomes of various skin diseases, including diagnostic evaluation, treatment algorithms, tumor staging and prognostic parameters
- Develop knowledge and skills for independent sign out of cases
- Participate in and appreciate the multidisciplinary team approach for the treatment of cancer patients or patients with complex non-neoplastic clinical problems

applicable, review of relevant patient history and prior material, identification of appropriate ancillary studies, and draft of complete pathology reports with integration of all findings into a diagnostic interpretation. The fellows will acquire increasing autonomy as the fellowship and their skills progress.

Responsibilities also include supervision of pathologist assistants and rotating visitors. The fellows will benefit from intradepartmental didactic activities including teaching lectures, grand rounds, and teaching slide review sessions, as well as from dermatopathology journal club and textbook chapter review presentations. The fellows will actively participate in teaching dermatopathology to dermatology residents. The fellows will attend consensus conferences in dermatopathology, but can also attend conferences in other subspecialty areas, such as soft tissue or molecular pathology. Fellows will prepare case presentations for multidisciplinary clinicopathologic correlation conferences, complex skin cancer management tumor board, melanoma and lymphoma disease management teams, and microbiology-dermpath joint case review conference. Fellows will review

archival pathology cases for both research and clinical purposes. Participation in research is encouraged with the goal of at least an abstract presentation and ideally also a manuscript submission to peer-reviewed scientific journals.

Our dermatopathology fellowship program offers trainees the opportunity to hone in skills for histopathologic diagnosis, learn the appropriate use and interpretation of special stains and immunohistochemistry, integrate results of immunofluorescence studies, molecular, and cytogenetic tests for diagnosis, and interpret all findings in context with clinical information understanding the pathophysiology, prognostic and management implications of skin conditions.

Fellows count on the guidance of six board-certified dermatopathologists with interests and expertise spanning melanocytic tumors, hematolymphoid neoplasms affecting the skin, bone and soft tissue pathology, among others.

Our faculty in conjunction with the didactic activities offered, cutting edge laboratory and digital pathology resources, and quality and quantity of cases at a world-renown referral center make the dermatopathology fellowship at MSKCC an excellent program.

Faculty:

M. Cecilia Lezcano L., MD
*Program Director,
Dermatopathology Fellowship*

Klaus Busam, MD
*Director, Dermatopathology
Service*

Joyce Chen, MD, PhD
Konstantinos Linos, MD
Andrea Moy, MD
Melissa Pulitzer, MD