

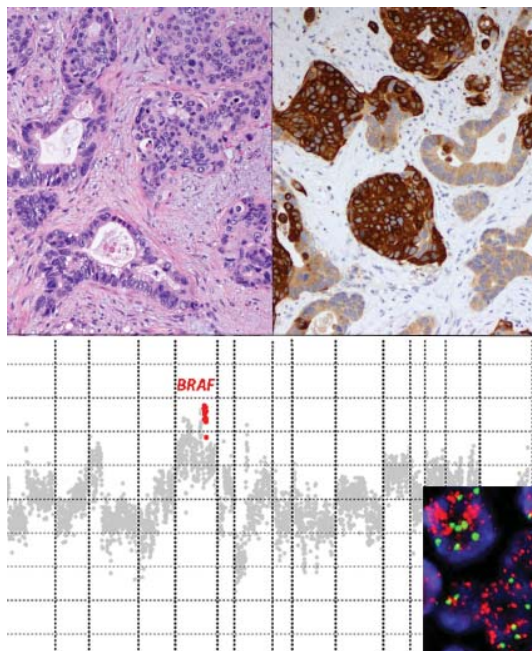


Memorial Sloan Kettering
Cancer Center

Gastrointestinal Pathology Fellowship

Memorial Sloan Kettering Cancer Center

The Department of Pathology at Memorial Sloan Kettering Cancer Center offers a one-year fellowship in gastrointestinal and hepatobiliary pathology. The fellowship begins on July 1st and ends on June 30th of the following year. Fellows are integrated into a specialized, active service that evaluates greater than 10,000 cases each year comprising biopsies and resections from the gastrointestinal tubular tract, liver, biliary tract and pancreas. Our service emphasizes a multidisciplinary team approach to patient management and provides exposure to a wealth of interesting and challenging in-house specimens, consultation case material, and comprehensive slide study sets. The program also includes a three-month rotation in the Department of Pathology and Laboratory Medicine at Weill Cornell Medical Center, where the case material includes a substantial amount of non-neoplastic gastrointestinal and hepatic pathology. During the fellowship year, fellows will also have the opportunity to conduct clinicopathologic and/or translational research. Faculty members will coach fellows in selecting a limited number of primary research projects, and guide them through the process of preparing research proposals, compiling and analyzing the data, preparing abstracts for submission to, and presentation at, national meetings, and preparing manuscripts for submission to scientific journals. Collaboration with members of other departments will be sought as necessary.



Number of Positions

One

Length of Program

One year (start date July 1st)

How to Apply

Online only (apply at least 18 months prior to planned start date)

<https://www.mskcc.org/departments/pathology/fellowships>

Contact

*Nicole Rinaldi
Fellowship Coordinator
Department of Pathology
Memorial Sloan Kettering Cancer Center
1275 York Ave. New York, NY 10065
Tel: 212-639-7102; Fax: 212-639-2631
email: rinaldin@mskcc.org*

For more information visit:

<https://www.mskcc.org/departments/pathology>

Goals and Objectives

- To increase experience with the diagnosis of both neoplastic and non-neoplastic diseases of the gastrointestinal tract, liver, and pancreatobiliary system
- To develop a robust understanding of special techniques used in the diagnosis of these diseases
- To become proficient at handling complex and challenging cases and at operating in a high volume clinical setting
- To develop an understanding of the clinical aspects of the various diseases and an appreciation of the role of the pathologist in a multidisciplinary team approach to the treatment of patients with these diseases
- To enhance teaching abilities through the interaction with pathology trainees, visiting students, and clinicians
- To become familiar with diverse research techniques and to improve data presentation and manuscript writing skills.

Clinical Responsibilities

Fellows will review slides and prepare reports for selected in-house and submitted consultation cases, with increasing independence as the fellowship progresses. They will be involved in the supervision and teaching of surgical pathology fellows, residents, and medical students in grossing and handling of specimens, writing up cases for sign-out with attending faculty, and preparing presentations for intradepartmental conferences and journal clubs. Fellows will be responsible for reviewing and presenting cases at

numerous interdisciplinary conferences such as tumor boards, gastroenterology fellows' conferences, and tumor-staging conferences.

Requirements

Applicants must be Board-certified or Board-eligible in anatomic pathology by the American Board of Pathology or the Royal College of Physicians and Surgeons of Canada.

Faculty

Jinru Shia, MD
Director of GI Pathology
Fellowship

David Klimstra, MD
Chair, Department of
Pathology

Laura Tang, MD, PhD
Efsevia Vakiani, MD, PhD
Olca Basturk, MD
Carlie Sigel, MD

Jaclyn Hechtman, MD
Christine Iacobuzio-
Donahue, MD, PhD