



Memorial Sloan Kettering  
Cancer Center

# Breast Pathology Fellowship

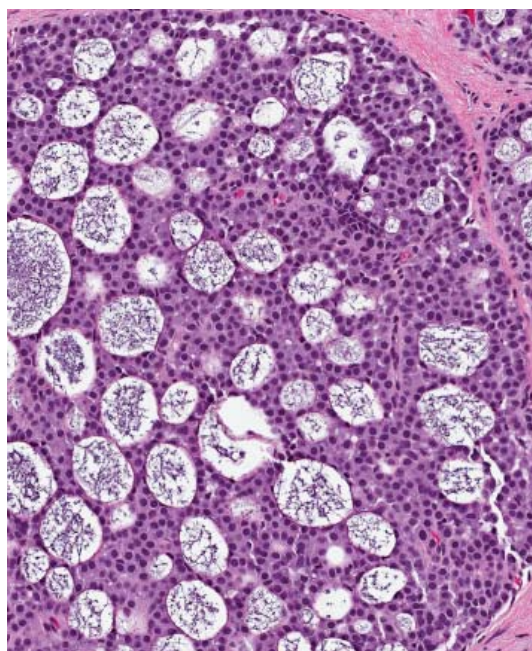
Memorial Sloan Kettering Cancer Center

The Department of Pathology at Memorial Sloan Kettering Cancer Center offers three 1-year Breast Pathology Fellowship positions. All fellows should have completed residency training in anatomic pathology and be certified/eligible for certification by the American Board of Pathology or Royal College of Physicians and Surgeons of Canada. Foreign medical graduates who meet the eligibility requirements are encouraged to apply for the International Breast Pathology Fellowship.

The fellowship provides in-depth training in the pathologic diagnosis of neoplastic and non-neoplastic breast diseases. The breast pathology fellow works closely with a cadre of breast pathology experts and actively participates in the diagnostic activities. Our breast pathology service handles nearly 13,000 cases a year. The large volume and complexity of our cases provide a unique learning environment under the supervision of experienced faculty. The breast pathology fellow presents the pathologic findings of the cases discussed at the multidisciplinary conference and radiologic-pathologic correlation conference. Selective rotations in the departments of surgery and radiation oncology are part of the curriculum. Research is an integral part of the training and each fellow conducts clinical and/or translational research projects. Faculty members provide guidance in the study design, data analysis, and manuscripts preparation. Most studies are presented at the national meetings.

**For more information visit:**

<https://www.mskcc.org/departments/pathology>



## Number of Positions

*Three*

## Length of Program

*One year (starting July 1st)*

## How to Apply

*Only online applications will be considered. Three recommendation letters are required. Early application is strongly encouraged*

<https://www.mskcc.org/hcp-education-training/fellowships/breast-pathology-fellowship>

## Contact

*Nicole Rinaldi  
Fellowship Coordinator  
Department of Pathology  
Memorial Sloan Kettering Cancer Center  
1275 York Ave. New York, NY 10065  
Tel: 212-639-7102; Fax: 212-639-2631  
email: [rinaldin@mskcc.org](mailto:rinaldin@mskcc.org)*

## Goals and Objectives

- Gain experience in the diagnosis of neoplastic and non-neoplastic lesions of the breast and biomarker assessment
- Understand the use of special techniques for pathologic characterization of breast diseases
- Comprehend the clinical features of breast diseases, including diagnostic and treatment algorithms, staging parameters and prognostic indices
- Develop an appreciation of the multidisciplinary team approach for the treatment of patients with breast disease
- Learn to integrate molecular pathology in the diagnosis and management of patients with breast malignancies
- Acquire knowledge and skills for independent sign-out
- Enhance teaching and communication skills
- Gain knowledge of research methodology and the use of analytical methods and experimental techniques in research projects

## Responsibilities

The breast pathology fellow will review slides and prepare reports for selected in-house and submitted consultation cases, with increasing autonomy as the fellowship progresses. Responsibilities also include supervision of trainees, pathologist assistants and rotating visitors, and participation in intradepartmental teaching conferences and journal club

presentations. The fellow will present cases at the weekly multidisciplinary breast conference, monthly radiologic-pathologic correlation conference, and attend the intradepartmental breast pathology consensus conferences. The breast pathology fellow is required to engage in research projects under the guidance of the attending faculty.

## Faculty

Edi Brogi, MD, PhD  
Director, Breast Pathology Service

Melissa P. Murray, DO  
Associate Director, Surgical Pathology Fellowship

Marcia Edelweiss, MD

Dilip D. Giri, MD, FACP

Jorge S. Reis-Filho, MD, PhD  
Director, Experimental Pathology

Hannah Y. Wen, MD, PhD  
Director, Breast Pathology Fellowship

Dara Ross, MD

Lee K. Tan, MD

Christina E. Vallejo, MD