

FINAL SEMINARS OF THE WINTER/SPRING 2011 SERIES: BIOSTATISTICS SEMINARS

❖ June 1, 2011 @ 4:00 PM
Journal discussion led by Java Satagopan
Associate Attending Biostatistician
Epidemiology and Biostatistics
Memorial Sloan-Kettering Cancer
Center

❖ June 8, 2011 @ 4:00 PM
Journal discussion led by Cami Sima
Assistant Attending Biostatistician
Epidemiology and Biostatistics
Memorial Sloan-Kettering Cancer
Center

PCPR SEMINAR

❖ June 14, 2011 @ 4:00 PM
Human Papillomavirus (HPV) and
Cervical Disease in HIV Infected
Women: Biologic Insights and Clinical
Implications
Seminar by Dr. Howard D. Strickler
Professor, Department of
Epidemiology and Population Health
Albert Einstein College of Medicine

RECOGNITION AND ACCOMPLISHMENTS

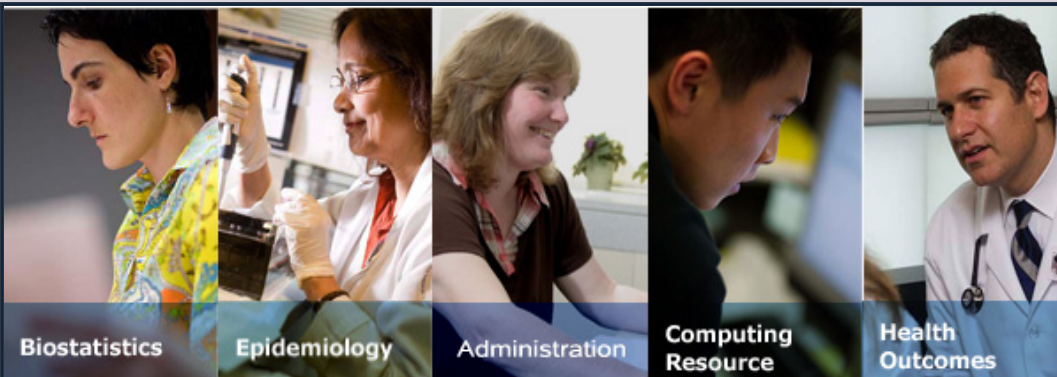
❖ Mithat Gönen will be the program
chair for the 2012 meeting of the
Society for Clinical Trials (SCT) which
will take place May 20-23, 2012 in
Miami. SCT is the preeminent
organization for all professionals
working on clinical trials, including
physicians, nurses, data managers,
programmers, statisticians, co-
ordinators, epidemiologists, policy
experts, ethicists, regulators, and
others who identify themselves as
trialists and SCT meetings reflect the
diversity of its membership. Consider
submitting an invited session
proposal or an abstract.

❖ Jonine Bernstein was listed as #18 in
the Top 20 NIH RO1 Awards
Spotlighted by the Principal
Investigators Association.

CLINICAL RESEARCH PROFESSIONALS WEEK

July 25-29, 2011

Each year MSKCC celebrates Clinical
Research Professionals Week to
recognize the efforts of the clinical
research staff. Events include a poster
session, speakers, lunch reception and
raffle prizes.



DEPARTMENT CHAIR

Colin Begg, PhD

EDITORS

Sharon Bayuga, MPH
Rick Church, MPH
Brian Denton, MS
Joshua Mirkin
Prusha Patel, MPH
Brendan Phalan

VENKATRAMAN SESHAN ELECTED AMERICAN STATISTICAL ASSOCIATION FELLOW

Venkatraman Seshan, Ph.D. has been elected a Fellow of
the American Statistical Association (ASA). Election as an
ASA Fellow is one of the highest professional achievements
in statistics. Each year no more than one-third of one
percent of the current ASA membership can be elected a
Fellow. Candidates for ASA Fellowship are nominated by
their peers. The selection process evaluates the candidate's
contributions in the areas of research, teaching and service
to the statistics profession through mentoring, consulting,
leadership. The awards ceremony for the newly selected
fellows will take place at the ASA annual meeting in Florida
this August.



Venkatraman Seshan, Ph.D.

Dr. Seshan first joined the faculty at Memorial Sloan-
Kettering in 1993. He is currently the Director of the
Biostatistics Computer-Intensive Support Services for the
Department of Epidemiology and Biostatistics. Dr. Seshan's
research focuses on developing methods for the analysis of
high throughput data, specifically from genomic profiling such as DNA copy number and
methylation arrays. He is an author or co-author on over 180 published papers and served
as Associate Editor of *Statistics and Probability Letters*.

We congratulate Dr. Seshan on this momentous achievement and well-deserved
recognition of his continuing contributions to the field of statistics.

WELCOME ALLISON SNYDERMAN! NEW FACULTY IN HEALTH OUTCOMES RESEARCH GROUP

Allison Snyderman, Ph.D. has joined the Health Outcomes
Research Group as an Assistant Attending Outcomes
Research Scientist. Dr. Snyderman comes to MSKCC from
the Johns Hopkins Bloomberg School of Public Health
where she received her Ph.D. in Health Services Research
and served as a postdoctoral fellow. During her studies, Dr.
Snyderman contributed to numerous projects including the
notable Michigan Keystone ICU project, investigating
mortality rates and length of stay among hospitals
implementing an intervention to reduce hospital infections.
Further, Dr. Snyderman consulted with the Maryland
Hospital Association on projects related to quality and
safety for Maryland hospitals. Her primary research
interests center around patient safety, quality of care, and
vulnerable populations. Dr. Snyderman aims to further
these concepts at MSKCC and is excited about collaborating
with others to bring about policy change within the cancer
field.



Allison Snyderman, Ph.D.

In June, Dr. Snyderman will be presenting a poster: "How Long Can ICUs Maintain Zero
Central Line-Associated Bloodstream Infections?" at the AcademyHealth Annual Research
Meeting in Seattle, Washington.

PRESENTATIONS

❖ **Ann Zauber** gave two presentations during the Colorectal Cancer Screening session at Digestive Disease Week, May 7-10, 2011 in Chicago, Illinois.

“Detection of Proximal Adenomas by Colonoscopy Following Flexible Sigmoidoscopy Depends on the Colonoscopy Referral Algorithm: Analysis of the UK Flexible Sigmoidoscopy Study Algorithm Applied to the US National Colonoscopy Study”; **Ann G. Zauber**, Timothy R. Church, Glenn Mills, Margaret Mandelson, John I. Allen, Paul A. Jordan, Andrew D. Feld, **Julie M. Ruckel**, **Sharon Bayuga-Miller**, **Deborah Kuk**, **Irene Orlow**, **Noah D. Kauff**, Michael J. O'Brien, **Sidney J. Winawer**

“Until What Age Is Colonoscopy Indicated in Elderly People Without Prior Screening?” J. Habbema, Elizabeth A. Moore, **Ann G. Zauber**

❖ **Meier Hsu** presented at one of the contributed paper sessions during the Society for Clinical Trials 32nd Annual Meeting, May 15-18, 2011 in Vancouver, British Columbia.

“Effect of Celecoxib on Adenoma Count using a Zero-inflated Poisson (ZIP) Model with Random Effects”; **Hsu M**, **Zauber AG**, **Gönen M**, Bertagnolli M.

❖ Not quite taking “tea to China,” **Andrew Vickers** was asked to lecture on acupuncture research in Chengdu, China, in Sichuan province. The lecture was entitled “The Acupuncture Trialists' Collaboration: individual patient data meta-analysis from high quality trials of acupuncture for chronic pain” and presented results from a study coordinated by Dr. Vickers, in which data from close to 18,000 randomized patients were collated and analyzed.

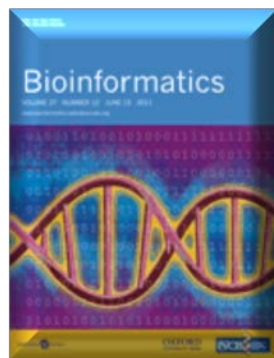
CRG CORNER

The Clinical Research Database (CRDB) runs on three platforms including CRDB Client, CRDB Web and CRDBi. The Computer Resource Group (CRG) introduced new forms including the Specimen Check Out Form for the Kimmel Center and the Research Laboratory Reserve Protocol Form.

CRDBi is the web client platform of the Clinical Research Database. The release version is currently CRDBi 1.24.1.

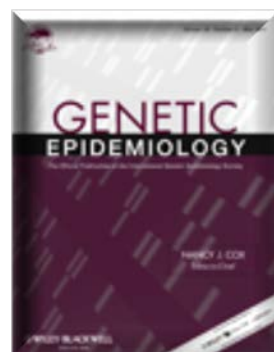
PUBLICATIONS

❖ [Clonality: an R package for testing clonal relatedness of two tumors from the same patient based on their genomic profiles](#)



Irina Ostrovnya, **Venkatraman E. Seshan**, Adam Olshen, and **Colin B. Begg** published a paper in *Bioinformatics* in which they describe their recently-released R package called ‘Clonality’. It implements methodology for testing whether tumors from the same patient are clonal or independent based on their mutational profiles. There are functions for such testing for the data consisting of either selected markers or genome-wide copy number arrays. The package also contains functionality to produce various graphical summaries of the data. The Clonality package may be freely downloaded from the [Bioconductor website](#).

❖ [Assessment of rare BRCA1 and BRCA2 variants of unknown significance using hierarchical modeling](#)



Marinela Capanu, Ph.D., and **Colin Begg**, Ph.D., co-authored a paper in *Genetic Epidemiology* which applies hierarchical modeling to the case-control WECARE Study to identify rare deleterious *BRCA1/BRCA2* missense mutations. Among the total of 181 rare missense variants identified in the data, there were 6 new missense variants detected by the model as plausibly deleterious and deserving of further investigation. MSKCC co-investigators include **Jonine Bernstein**, Ph.D., and **Xiaolin Liang**, MA.

STAFF ANNOUNCEMENTS

Please join us in welcoming our new staff!

❖ **Kara Fraga**, Administrative Manager

Kara holds her MPA in Health Policy and Management from NYU Wagner. She has worked in the healthcare field for 13 years, the past three at MSKCC. Kara loves to travel--Spain being a favorite destination. Kara joins the Administrative team and is job sharing with **Shireen Lewis**.



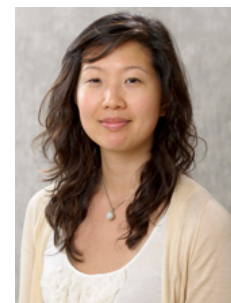
❖ **Prusha Patel**, Research Study Assistant

Prusha holds her MPH in Health Policy and Management. Prior to coming to MSKCC, she worked at the Philadelphia Corporation for Aging and volunteered at the Visiting Nurse Services of New York. Prusha will be working with investigators and colleagues in the Epidemiology and Health Outcomes services.



❖ **Ling Y. Chen**, Data Analyst II

Ling holds her MPH from Columbia University where she studied epidemiology and global health. Prior to this position, she worked as a Research Study Assistant within the Gastroenterology service on clinical trials in pancreatic cancers. Ling works with Andrew Vickers and his research team.



Staff Promotions

❖ **Julie Ruckel**, Research Project Manager, Epidemiology

❖ **Chelsea Schneider**, Research Study Assistant II, Epidemiology

Farewell to staff

❖ **Dawn Lavene** will be pursuing her nursing degree at the University of Pennsylvania in July.

❖ **Tracy Layne** will be leaving the department in July to pursue a Ph.D. in Epidemiology at Yale.

❖ **Joshua Mirkin** will be leaving the department in July to pursue his M.D. at SUNY Downstate.

❖ **Himali Patel**, after her years of service to the lab and department, has chosen to leave MSKCC to spend more time with her family and beautiful son born last year. We wish her and her family all the best.

❖ **Caroline Savage** will be pursuing her doctoral degree in Health Outcomes Research and Policy at the University of Washington in the fall.

❖ **Erica Schubert** will be leaving the department to pursue her doctoral degree in Psychology at the Ferkauf Graduate School of Psychology at Yeshiva University.