

Call for Abstracts | Submission deadline: **August 2** | Details inside\*



Memorial Sloan Kettering  
Cancer Center™



AMERICAN ASSOCIATION  
FOR THORACIC SURGERY  
We Model Excellence

ADVANCES IN  
**THORACIC  
SURGICAL  
ONCOLOGY**  
October 2-3, 2015

COURSE LOCATION

Waldorf Astoria Hotel  
301 Park Avenue  
New York

For more information or to register, go to:

[www.mskcc.org/thoracicsurgerycourse](http://www.mskcc.org/thoracicsurgerycourse)

# ADVANCES IN THORACIC SURGICAL ONCOLOGY

October 2-3, 2015 | New York



## \*Call for Abstracts

Participants are invited to submit an Abstract for presentation at the meeting. Abstracts for the poster session will be selected on the basis of their scientific merit and content quality. Six travel grants will be awarded in the amounts of **\$500 for participants from North America** and **\$1000 for participants from other continents**.

To submit an abstract, please visit:

**[www.managedcme.net/upload-thoracic15](http://www.managedcme.net/upload-thoracic15)**

Abstracts must be submitted by:

**Sunday, August 2, 2015.**

## Target Audience

Physicians and allied health professionals who care for patients with thoracic oncologic diseases including lung cancer, esophageal cancer, mesothelioma, and thymic malignancies.

## Educational Objectives

- Improve the understanding of contemporary, minimally-invasive surgical approaches to lung and esophageal cancers
- Appreciate the importance of a multidisciplinary approach to diagnosing and treating thoracic malignancies
- Understand the multiple roles of thoracic surgery in the era of targeted therapy

## AMA Credit

MSK designates this live activity for a maximum of **13.5 AMA PRA Category 1 Credits™**. Physicians should only claim credit commensurate with the extent of their participation in the activity.

## Sponsorship

This conference is sponsored by **Memorial Sloan Kettering Cancer Center** and **The American Association for Thoracic Surgery**.



Memorial Sloan Kettering  
Cancer Center.



AMERICAN ASSOCIATION  
FOR THORACIC SURGERY  
We Model Excellence

[www.mskcc.org/thoracicsurgerycourse](http://www.mskcc.org/thoracicsurgerycourse)

# ADVANCES IN THORACIC SURGICAL ONCOLOGY

October 2-3, 2015 | New York



## FACULTY



MSK COURSE DIRECTOR

### David R. Jones MD

Attending Surgeon,  
Chief, Thoracic Service,  
Department of Surgery,  
Memorial Sloan Kettering Cancer Center (MSK)

**MSK THORACIC SERVICE  
DEPARTMENT OF SURGERY FACULTY**

### Prasad Adusumilli MD

Associate Attending Surgeon

### Manjit Bains MD

Attending Surgeon

### Matthew Bott MD

Assistant Attending Surgeon

### Robert Downey MD

Attending Surgeon

### James Huang MD

Associate Attending Surgeon

### Bernard Park MD

Attending Surgeon

### Valerie Rusch MD

Attending Surgeon



Memorial Sloan Kettering  
Cancer Center™

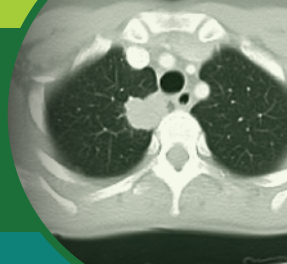


AMERICAN ASSOCIATION  
FOR THORACIC SURGERY  
We Model Excellence

[www.mskcc.org/thoracicsurgerycourse](http://www.mskcc.org/thoracicsurgerycourse)

# ADVANCES IN THORACIC SURGICAL ONCOLOGY

October 2-3, 2015 | New York



## FACULTY

### MSK FACULTY

**David Amar MD**

Director, Thoracic Anesthesia  
Anesthesiology Service

**George Bosl MD**

Chair, Department of Medicine  
Patrick M. Byrne Chair in  
Clinical Oncology

**Michelle Ginsberg MD**

Director of Cardiothoracic  
Imaging  
Department of Radiology

**Matthew Hellmann MD**

Assistant Attending Physician  
Thoracic Oncology Service  
Division of Solid Tumor  
Oncology, Department of  
Medicine

**Lee Jones PhD**

Attending Physiologist  
Department of Medicine  
Rehabilitation Service

**Evan Matros MD**

Assistant Attending Surgeon  
Plastic and Reconstructive  
Service, Department of  
Surgery

**Gregory Riely MD PhD**

Associate Attending Physician  
Thoracic Oncology Service  
Division of Solid Tumor  
Oncology  
Department of Medicine

**Andreas Rimner MD**

Assistant Attending  
Department of Radiation  
Oncology

**Charles Rudin MD PhD**

Attending Physician, Chief  
Thoracic Oncology Service  
Division of Solid Tumor  
Oncology, Department of  
Medicine

**Stephen Solomon MD**

Chief, Interventional  
Radiology Service,  
Department of Radiology

**William Travis MD**

Attending Pathologist  
Chief Thoracic Pathology  
Department of Pathology

**Abraham Wu MD**

Assistant Attending  
Radiation Oncologist,  
Department of Radiation  
Oncology

### VISITING FACULTY

**Shanda Blackmon  
MD MPH**

Associate Professor  
Department of Surgery  
Mayo Clinic  
Rochester, MN

**Malcolm DeCamp Jr. MD**

Professor and Chief,  
Division of Thoracic Surgery  
Northwestern University,  
Chicago, IL

**Mark Ferguson MD**

Professor and Chief,  
Division of Thoracic Surgery  
Department of Surgery  
The University of Chicago,  
Chicago, IL

**Bryan Meyers MD MPH**

Professor and Chief,  
Thoracic Surgery  
Washington University  
School of Medicine,  
St. Louis, MO

**Weder Walter MD**

Professor of Surgery,  
Chairman and Chief  
University Hospital  
Zurich, Switzerland

**Kazuhiro Yasufuku  
MD PhD**

Director, Interventional  
Thoracic Surgery Program;  
Associate Professor, Division  
of Thoracic Surgery, Toronto  
General Hospital,  
Toronto, Canada



Memorial Sloan Kettering  
Cancer Center.



AMERICAN ASSOCIATION  
FOR THORACIC SURGERY  
We Model Excellence

# ADVANCES IN THORACIC SURGICAL ONCOLOGY

October 2-3, 2015 | New York



## Friday, October 2

### MORNING

7:00-7:45 REGISTRATION & BREAKFAST

## LUNG CANCER I

MODERATORS David R. Jones MD  
Bryan F. Meyers MD

7:45-8:00 WELCOMING REMARKS  
David R. Jones MD

8:00-8:15 **Carinal Resection and Reconstruction:  
Approach and Technical Considerations**  
Weder Walter MD

8:15-8:30 **Pulmonary Resection in the COPD Patient:  
A Balanced Approach**  
Malcolm DeCamp Jr. MD

8:30-8:45 **Checkpoint Blockade:  
A New Treatment Paradigm for NSCLC**  
Matthew Hellmann MD

8:45-9:00 **VATS Chest Wall Resection:  
Indications and Results**  
Shanda Blackmon MD MPH

9:00-9:15 **How I do a VATS Mediastinal  
Lymph Node Dissection**  
David R. Jones MD

9:15-9:30 **Update on Thoracic Oncology  
Clinical Trials at MSK & Beyond**  
Charles Rudin MD PhD

9:30-9:50 DISCUSSION

9:50-10:10 COFFEE



Memorial Sloan Kettering  
Cancer Center.



AMERICAN ASSOCIATION  
FOR THORACIC SURGERY  
We Model Excellence

[www.mskcc.org/thoracicsurgerycourse](http://www.mskcc.org/thoracicsurgerycourse)

# ADVANCES IN THORACIC SURGICAL ONCOLOGY

October 2-3, 2015 | New York



## Friday, October 2

### MORNING

## COMPLICATIONS

MODERATORS

Matt Bott MD  
Kazuhiro Yazufuku MD

10:10-10:25

**Risk Factors for and  
Postoperative Management of  
Post-Resectional ALI/ARDS**  
Robert Downey MD

10:25-10:40

**Evidence-Based Recommendations for  
Atrial Fibrillation Prophylaxis**  
David Amar MD

10:40-10:55

**Pre- and Perioperative Venous  
Thromboembolism Prophylaxis:  
Indications and Evidence**  
Matthew Bott MD

10:55-11:10

**Establishment of Thoracic  
Oncologic Surgery  
Survivorship Programs**  
Bernard Park MD

11:10-11:45

**DEBATE**  
**Lung Cancer Screening  
Programs Will Increase  
Lung Cancer Resections**

**PRO:**  
**CON:**

Bernard Park MD  
Malcolm DeCamp Jr. MD

11:45-12:45

LUNCH



Memorial Sloan Kettering  
Cancer Center.



AMERICAN ASSOCIATION  
FOR THORACIC SURGERY  
We Model Excellence

[www.mskcc.org/thoracicsurgerycourse](http://www.mskcc.org/thoracicsurgerycourse)

# ADVANCES IN THORACIC SURGICAL ONCOLOGY

October 2-3, 2015 | New York



## Friday, October 2

### AFTERNOON

## ESOPHAGUS I

MODERATORS

Bernard J. Park MD  
Mark Ferguson MD

12:45-1:00

**Is There a Role for Surgery in  
Squamous Cell Esophageal Cancer?**  
Matthew Bott MD

1:00-1:15

**Current Management of  
Barrett's Esophagus and  
T1a Adenocarcinoma**  
Bryan Meyers MD MPH

1:15-1:30

**Colonic Interposition for  
Esophageal Reconstruction**  
Mark Ferguson MD

1:30-1:45

**What is Optimal Follow-Up for the  
Post-Esophagectomy Patient?**  
Shanda Blackmon MD MPH

1:45-2:00

DISCUSSION

2:00-2:15

COFFEE



Memorial Sloan Kettering  
Cancer Center™



AMERICAN ASSOCIATION  
FOR THORACIC SURGERY  
We Model Excellence

[www.mskcc.org/thoracicsurgerycourse](http://www.mskcc.org/thoracicsurgerycourse)



# ADVANCES IN THORACIC SURGICAL ONCOLOGY

October 2-3, 2015 | New York



## Friday, October 2

### AFTERNOON

## MEDIASTINUM THYMUS

MODERATORS

James Huang MD  
Manjit Bains MD

2:15-2:30

**Radiologic Assessment of  
Anterior Mediastinal Masses**  
Michelle Ginsberg MD

2:30-2:45

**Multimodality Therapy for  
Locoregionally Advanced Thymoma**  
James Huang MD

2:45-3:00

**Tumor Genomics, Targeted  
Therapies and Immunotherapy:  
What's New in Thymic Malignancies**  
Gregory Riely MD PhD

3:00-3:15

**Nonseminomatous Germ Cell Tumor and  
Indications for Surgery**  
George Bosl MD

3:15-3:35

DISCUSSION



Memorial Sloan Kettering  
Cancer Center.



AMERICAN ASSOCIATION  
FOR THORACIC SURGERY  
We Model Excellence

[www.mskcc.org/thoracicsurgerycourse](http://www.mskcc.org/thoracicsurgerycourse)



# ADVANCES IN THORACIC SURGICAL ONCOLOGY

October 2-3, 2015 | New York



## Friday, October 2

### AFTERNOON

## CASE PRESENTATIONS

3:35-4:30

**Case Presentations from  
The MSK Tumor Board**

MODERATORS

David R. Jones MD  
Andreas Rimner MD

## POSTER PRESENTATIONS

4:30-5:30

**SELECTED POSTER PRESENTATIONS  
WITH WINE AND CHEESE**

5:30-6:30

**COCKTAIL RECEPTION & DINNER**



Memorial Sloan Kettering  
Cancer Center™



AMERICAN ASSOCIATION  
FOR THORACIC SURGERY  
We Model Excellence

[www.mskcc.org/thoracicsurgerycourse](http://www.mskcc.org/thoracicsurgerycourse)

# ADVANCES IN THORACIC SURGICAL ONCOLOGY

October 2-3, 2015 | New York



## Saturday, October 3

### MORNING

7:00-7:45

BREAKFAST

## LUNG CANCER II

MODERATORS

Robert Downey MD  
Malcolm DeCamp Jr. MD

7:45-8:00

**Induction Chemotherapy for T2-3NO-IMO NSCLC:  
Does It Make Sense?**

David R. Jones MD

8:00-8:15

**Anterior Approach to Pancoast  
Tumors-Technical Considerations**

Bryan F. Meyers MD

8:15-8:30

**IASLC Classification Changes For  
Lung Adenocarcinoma:  
Impact on Surgical Procedure**

Prasad Adusumilli MD

William Travis MD

8:30-8:45

**Invasive Mediastinal Staging in 2015  
— Do We Need Mediastinoscopy?**

Kazuhiro Yasufuku MD PhD

8:45-9:00

**Role of Perioperative Exercise Therapy in the  
Thoracic Surgery Patient**

Lee Jones PhD

9:00-9:15

**Who Should Receive PORT Following an  
R0 Lung Cancer Resection?**

Abraham Wu MD

9:15-9:30

**Indications for Ablative Therapies for  
Isolated Lung Cancer**

Stephen Solomon MD

9:30-9:50

**cT1aNOMO NSCLC: Resection vs. SBRT:  
What Is the Data?**

Bernard Park MD



Memorial Sloan Kettering  
Cancer Center.



AMERICAN ASSOCIATION  
FOR THORACIC SURGERY  
We Model Excellence

[www.mskcc.org/thoracicsurgerycourse](http://www.mskcc.org/thoracicsurgerycourse)

# ADVANCES IN THORACIC SURGICAL ONCOLOGY

October 2-3, 2015 | New York



## Saturday, October 3

### MORNING

9:50-10:10 COFFEE

## ESOPHAGUS II

MODERATORS Mark Ferguson MD  
Walter Weder MD

10:10-10:25 **Open Ivor Lewis Esophagectomy**  
Manjit Bains MD

10:25-10:40 **Management Strategies for Anastomotic Leak**  
Bryan F. Meyers MD

10:40-10:55 **Diagnosis and Management of  
Late Post-Esophagectomy Complications**  
Malcolm DeCamp Jr. MD

10:55-11:10 **Management of Siewart II Esophageal Cancer**  
Mark Ferguson MD

11:10-11:25 **How I do a Supercharged  
Jejunal Interposition**  
Shanda Blackmon MD MPH

11:25-11:40 **What is the Optimal Lymphadenectomy for  
Esophageal Cancer?**  
Mark Ferguson MD

11:40-12:00 DISCUSSION

12:00-1:00 LUNCH



Memorial Sloan Kettering  
Cancer Center™



AMERICAN ASSOCIATION  
FOR THORACIC SURGERY  
We Model Excellence

[www.mskcc.org/thoracicsurgerycourse](http://www.mskcc.org/thoracicsurgerycourse)

# ADVANCES IN THORACIC SURGICAL ONCOLOGY

October 2-3, 2015 | New York



## Saturday, October 3

### AFTERNOON

## CHEST WALL MESOTHELIOMA

MODERATORS

Prasad Adusumilli MD  
Manjit Bains MD

1:00-1:15

**Immunotherapy for Mesothelioma:  
What the Surgeon Should Know**  
Prasad Adusumilli MD

1:15-1:30

**Soft Tissue Reconstruction Following  
Chest Wall Resection**  
Evan Matros MD

1:30-1:45

**Management Options for Malignant  
Pleural and Pericardial Effusions**  
Robert Downey MD

1:45-2:00

**Indications & Outcomes for  
Sternal Resection for Malignancy**  
Matthew Bott MD

2:00-2:15

**Nanotechnology Enabled  
Image Guided Therapeutics in Lung Cancer**  
Kazuhiro Yasufuku MD PhD

2:15-2:35

DISCUSSION

2:35-2:55

COFFEE



Memorial Sloan Kettering  
Cancer Center.



AMERICAN ASSOCIATION  
FOR THORACIC SURGERY  
We Model Excellence

[www.mskcc.org/thoracicsurgerycourse](http://www.mskcc.org/thoracicsurgerycourse)

# ADVANCES IN THORACIC SURGICAL ONCOLOGY

October 2-3, 2015 | New York



## Saturday, October 3

### CONCLUSION

#### VIDEO SESSIONS

MODERATORS

Shanda Blackmon MD MPH  
Kazuhiro Yazufuku MD

2:55-3:10

**Interoperative Bleeding with VATS Lobectomy**  
Shanda Blackmon MD MPH

3:10-3:25

**Resection Strategies for Mediastinal  
Germ Cell Tumors**  
Manjit Bains MD

3:25-3:40

**Extrapleural Pneumonectomy**  
Weder Walter MD

3:40-3:55

**Robotic Resection of Advanced Lung Cancer**  
Bernard Park MD

3:55-4:10

**Robotic Thymectomy**  
James Huang MD

4:10-4:15

**CONCLUDING REMARKS**  
David R. Jones MD

*Please complete and return  
Educational Credit Request Form  
to Reception Desk.*



Memorial Sloan Kettering  
Cancer Center™



AMERICAN ASSOCIATION  
FOR THORACIC SURGERY  
We Model Excellence

[www.mskcc.org/thoracicsurgerycourse](http://www.mskcc.org/thoracicsurgerycourse)

# REGISTRATION

EARLY*	GENERAL	AATS MEMBERS**	
<b>\$500</b>	<b>\$550</b>	<b>\$450</b>	MDs, PhDs and DOs
<b>\$250</b>	<b>\$300</b>	<b>\$200</b>	Fellows, Residents, RNs

\*Deadline: September 1, 2015. \*\*AATS member discount deadline: September 1, 2015.

Registration fee includes an electronic syllabus and other related hand-out materials, continental breakfast, lunch, and refreshment breaks. Special meals are available upon request, including vegetarian, kosher, or gluten-free. Please let us know if we can assist you with special dietary needs.

To register to attend please go to:

[www.mskcc.org/thoracicsurgerycourse](http://www.mskcc.org/thoracicsurgerycourse)

Or contact the:

## OFFICE OF CONTINUING MEDICAL EDUCATION Memorial Sloan Kettering Cancer Center

633 Third Avenue, 12th floor, New York, New York 10017

**(646) 227-2025 • [brodheap@mskcc.org](mailto:brodheap@mskcc.org)**

### TARGET AUDIENCE

Physicians and allied health professionals who care for patients with thoracic oncologic diseases including lung cancer, esophageal cancer, mesothelioma, and thymic malignancies.

### COURSE DESIGN

This course is comprised of lectures and interactive audience participation encouraging the intellectual exchange of ideas between faculty and participants.

### EVALUATION

A course evaluation survey sent out electronically will provide attendees with the opportunity to review the sessions and the speakers and to identify future educational needs.

### ACCREDITATION STATEMENT

MSK is accredited by the Accreditation Council for Continuing Medical Education (ACCME) to provide continuing medical education for physicians.

### AMA CREDIT DESIGNATION STATEMENT

MSK designates this live activity for a maximum of **13.5 AMA PRA Category 1 Credits™**. Physicians should only claim credit commensurate with the extent of their participation in the activity. The AMA has determined that physicians not licensed in the United States but who participate in this CME activity are eligible for **13.5 AMA PRA Category 1 Credit(s)™**.

### FACULTY DISCLOSURE

It is the policy of MSK to make every effort to insure balance, independence, objectivity, and scientific rigor in all continuing medical education activities which it sponsors as an ACCME accredited provider. In accordance with ACCME guidelines and standards, all faculty participating in an activity sponsored by MSK are expected to disclose any significant financial interest or other relationship with the manufacturer(s) of any commercial product(s) and/or provider(s) of commercial services which are discussed by the faculty members in an educational presentation. As required by the ACCME, when an unlabeled use of a commercial product or an investigational use not yet approved for any purpose is discussed during an educational activity, MSK requires the speaker to disclose that the product is not labeled for the use under discussion or that the product is still investigational.

### OUTCOMES MEASUREMENT SURVEY

Six months after the end of the course an Outcomes Measurement Survey will be sent to all participants to help us determine what positive impacts have been made on participant practice as a result of the course.

MSK is proud to  
co-sponsor this  
course with AATS.



Memorial Sloan Kettering  
Cancer Center.



AMERICAN ASSOCIATION  
FOR THORACIC SURGERY  
We Model Excellence

Please be sure  
to mark your  
calendars for  
upcoming  
**2015**  
**MSK CME**  
**COURSES**

**ACCREDITATION STATEMENT**

MSK is accredited by the  
Accreditation Council for  
Continuing Medical Education  
to sponsor continuing medical  
education for physicians.

For course updates, follow:

**facebook.com/mskcme**  
or on Twitter: **@mskcme**

Ovarian Cancer	June 5-6
Trudy N. Small Symposium	June 19
Thoracic Pathology NYC	September 11-13
Robotics (w/ MDACC)	September 17-18
Endobronchial Ultrasound Interventional Bronchoscopy	September 24-25

**THORACIC SURGICAL ONCOLOGY OCTOBER 2-3**

Oncologic FDG PET/CT	October 9-10
Genetics and Genomics of Gynecologic Cancers	October 15-16
Defining the Actionable Genome	October 16-17
Lymphoid Leukemias	October 18
Dermatology Through The Lens of Medical Informatics	October 22
Dermatologic Care	October 23
Dermoscopy Intermediate	October 23-24
Musculoskeletal Tumor Pathology	October 23-25
Urologic Cancers	October 29-31
Complex Skin Cancers	November 20-22
International Ovarian Cancer	December 4-5

To register or for more information, contact:

OFFICE OF CONTINUING MEDICAL EDUCATION

**Memorial Sloan Kettering Cancer Center**

633 Third Avenue, 12th Floor, New York, New York 10017

(646) 227-2025 • [brodheap@mskcc.org](mailto:brodheap@mskcc.org)

Or register online:

**[www.mskcc.org/cme](http://www.mskcc.org/cme)**



Memorial Sloan Kettering  
Cancer Center™