

Ready to start planning your care? Call us at [800-525-2225](tel:800-525-2225) to make an appointment.

×



Memorial Sloan Kettering  
Cancer Center

[Make an Appointment](#)

[Back](#)

[Treatment for Lung Cancer](#)

[Refer a Patient](#)

[About Us](#) [Our mission, vision & core values](#) [Leadership](#) [History](#) [Equality, diversity & inclusion](#) [Annual report](#) [Give to MSK](#)

ABOUT US

[Our mission, vision & core values](#)

[Leadership](#)

[History](#)

[Equality, diversity & inclusion](#)

[Annual report](#)

[Give to MSK](#)

Available Monday through Friday, 8 a.m. to 6 p.m.

[Make an Appointment](#)

# Our Lung Cancer Survivorship Program

People who have undergone treatment for lung cancer often have special needs. The disease and its treatment can cause side effects, and there is a possibility that new tumors could develop after treatment. Our Lung Cancer Survivorship Program is designed to provide you with specialized care to address these concerns after your treatment ends.



## Jacqueline's Story: MSK Clinic Offers Relief When Cancer Spreads to Bones

Meet Jacqueline, who received important pain relief from a specialized MSK clinic after lung cancer had spread to her bones.

[Learn more](#)

Follow-up exams are especially important for people who have had small cell lung cancer. All patients with extensive-stage small cell lung cancer and the majority of patients with limited-stage small cell lung cancer have the cancer come back. Lung cancer survivors are also more likely than those who have never had the disease to develop a second primary lung cancer — a new growth unrelated to the first.

After your treatment for lung cancer, the experts in our Lung Cancer Survivorship Program will monitor you for signs that the cancer has returned (recurred). We'll also help you to manage any side effects that might result from your treatment. We offer a variety of supportive services for people during and after treatment, including psychiatry, social work, integrative medicine, chaplaincy, and support groups. These services are staffed by healthcare professionals who specialize in caring for people with cancer.

A nurse practitioner who specializes in the care of lung cancer survivors will provide your follow-up care. In addition to monitoring for signs of cancer recurrence, he or she will focus on identifying, preventing, and controlling any long-term and late effects associated with your cancer and its treatment.

During a survivorship follow-up visit, the nurse practitioner will:

- perform a physical exam and review your medical history
- complete an assessment to detect recurrence of cancer
- identify, evaluate, and manage any long-term or late effects of cancer and its treatment (both physical and psychological)
- discuss methods to prevent new health problems and make health recommendations related to [nutrition](#), [exercise](#), and [quitting tobacco use](#)

recommend appropriate cancer [screening](#)

He or she will work closely with your treatment team and will provide you, your primary care doctor, and any other medical care providers with a treatment summary and survivorship care plan. Your physicians can then incorporate this information into your overall medical plan.

After each follow-up visit, your nurse practitioner will continue to update your other medical providers.

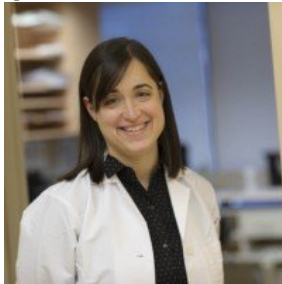
Our clinicians focus on quality-of-life issues in lung cancer survivors, including shortness of breath and fatigue. Our multidisciplinary team is also exploring new ways to improve the lives of patients following treatment for lung cancer, including how exercise could help improve lung function.

## Your MSK Follow-Up Providers



[Amy  
Devigne](#)

Nurse Practitioner



[Alison Berkowitz  
Hergianto](#)

Nurse Practitioner

PREVIOUS

[Rehabilitation after Treatment for Lung Cancer](#)

NEXT

[Living Beyond Lung Cancer](#)

### - Connect

[Contact us](#)

[Locations](#)

#### APPOINTMENTS

[800-525-2225](#)



### - About MSK

[About us](#)

[Careers](#) 

[Giving](#) 

### - Cancer Care

[Adult cancer types](#)

[Child & teen cancer types](#)

[Integrative medicine](#)

[Nutrition & cancer](#)

[Find a doctor](#)

## ▾ Research & Education

[Sloan Kettering Institute](#)

[Gerstner Sloan Kettering Graduate School](#) ■

[Graduate medical education](#)

[MSK Library](#) ■

---

[Communication preferences](#)

[Cookie preferences](#)

[Legal disclaimer](#)

[Accessibility statement](#)

[Privacy policy](#)

[Price transparency](#)

[Public notices](#)

© 2024 Memorial Sloan Kettering Cancer Center